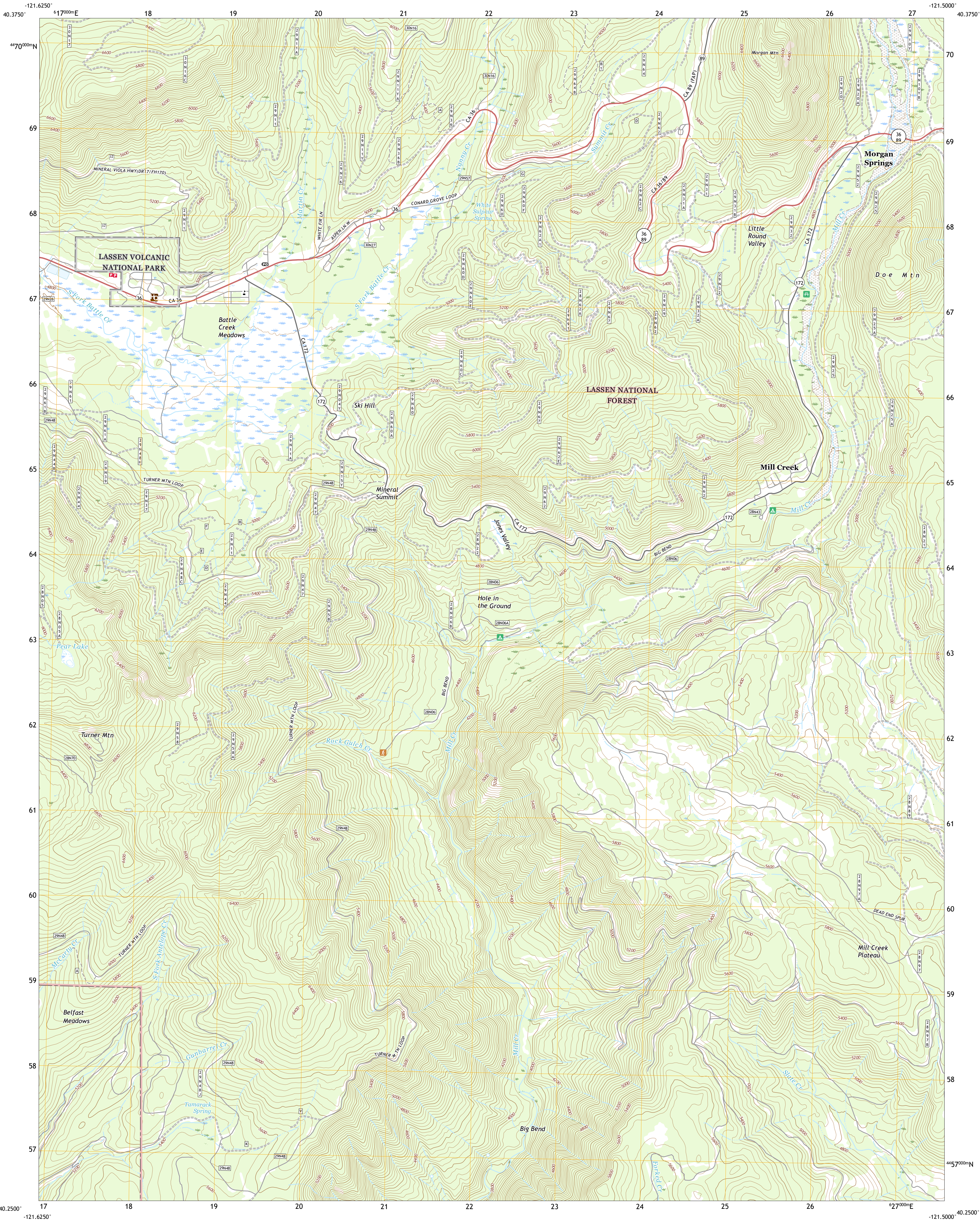




U.S. DEPARTMENT OF THE INTERIOR  
U.S. GEOLOGICAL SURVEY



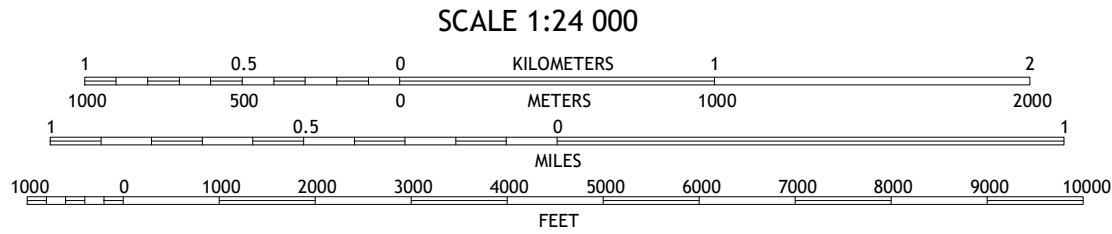
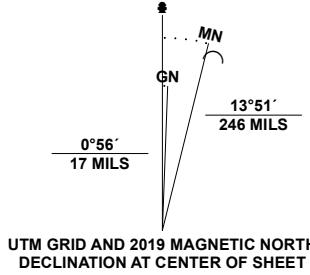
MINERAL QUADRANGLE  
CALIFORNIA - TEHAMA COUNTY  
7.5-MINUTE SERIES



Produced by the United States Geological Survey

North American Datum of 1983 (NAD83)  
World Geodetic System of 1984 (WGS84). Projection and  
1 000-meter grid/Universal Transverse Mercator, Zone 10T  
This map is not a legal document. Boundaries may be  
generalized for this map scale. Private lands within government  
reservations may not be shown. Obtain permission before  
entering private lands.

Imagery.....NAIP, July 2020 - July 2020  
Roads.....U.S. Census Bureau, 2016 - 2018  
Roads within US Forest Service with limited Forest Service updates, 2017  
Names.....National Hydrography Dataset, 2003 - 2019  
Hydrography.....National Hydrography Dataset, 2003 - 2019  
Contours.....National Elevation Dataset, 2021  
Boundaries.....Multiple sources; see metadata file 2017 - 2021  
Public Land Survey System.....BLM, 2020  
Wetlands.....FWS National Wetlands Inventory 1981 - 1981

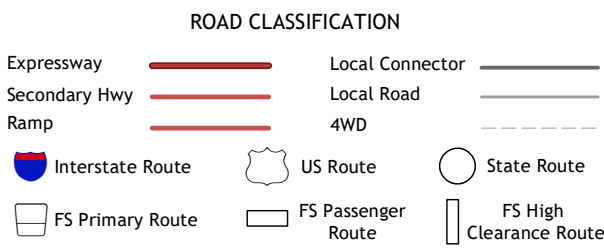


CONTOUR INTERVAL 40 FEET  
NORTH AMERICAN VERTICAL DATUM OF 1988  
This map was produced to conform with the  
National Geospatial Program US Topo Product Standard.



1	2	3
4	5	6
7	8	

1 Grays Peak  
2 Lassen Peak  
3 Reading Peak  
4 Lyonsville  
5 Childs Meadows  
6 Barkley Mountain  
7 Onion Butte  
8 Humboldt Peak



Check with local Forest Service unit  
for current travel conditions and restrictions.

MINERAL, CA  
2022

