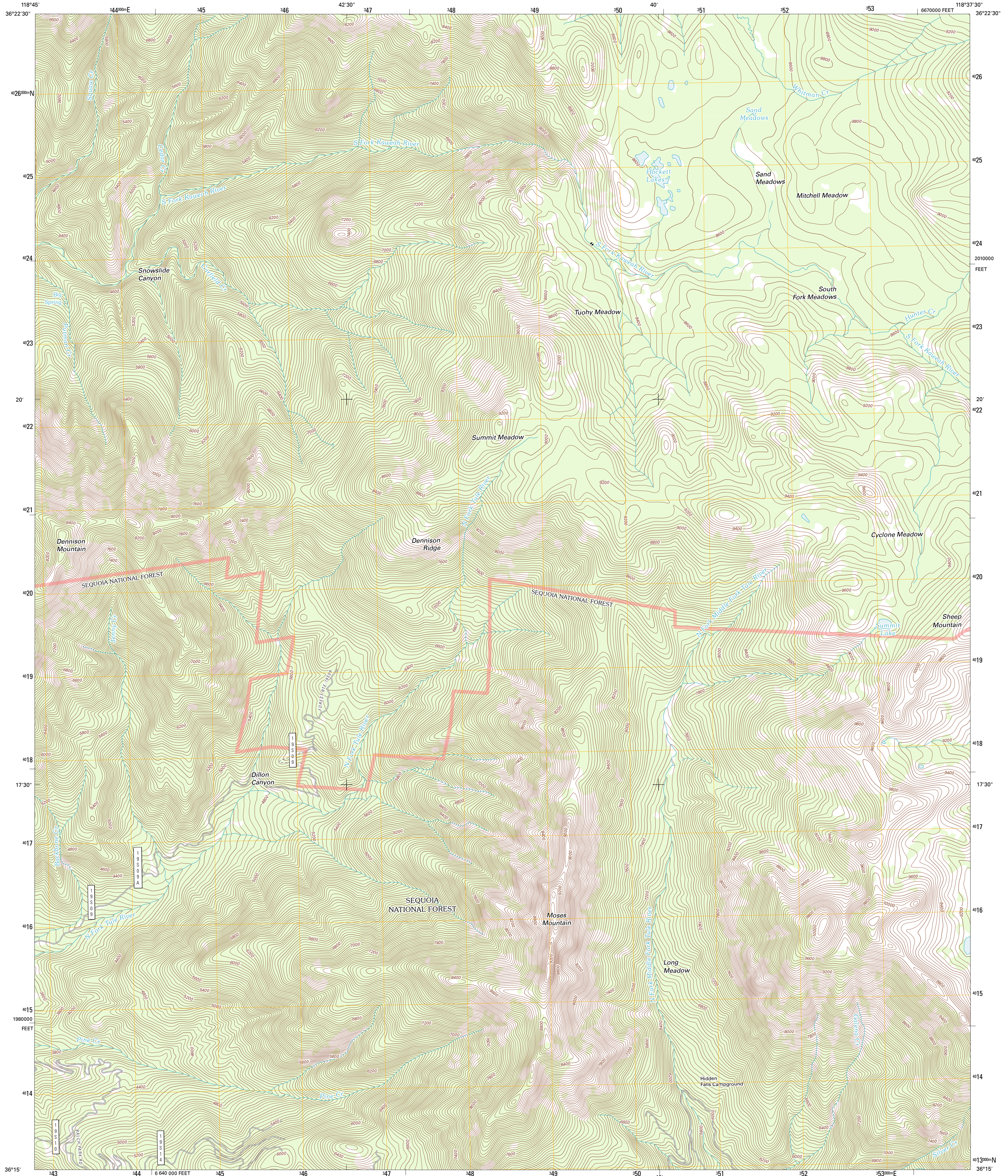




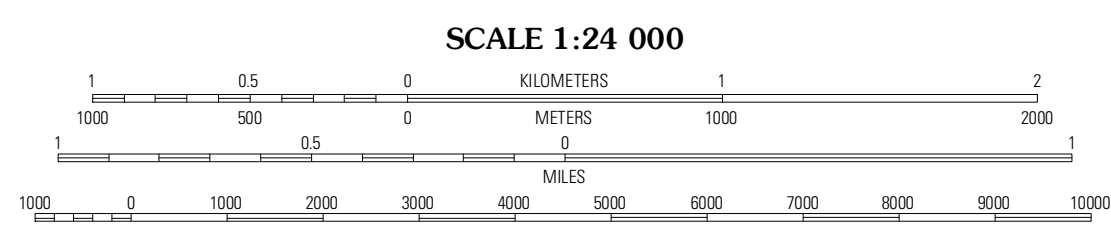
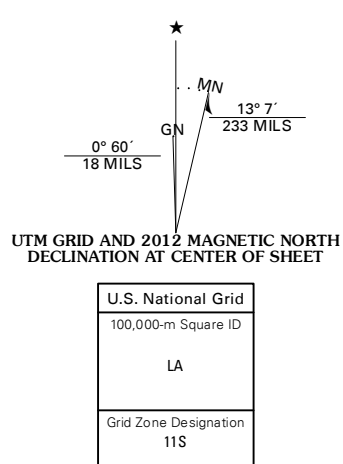
U.S. DEPARTMENT OF THE INTERIOR
U. S. GEOLOGICAL SURVEY



MOSES MOUNTAIN QUADRANGLE
CALIFORNIA-TULARE CO.
7.5-MINUTE SERIES



Produced by the United States Geological Survey
North American Datum of 1983 (NAD83)
Roads.....©2006-2011 TomTom
Roads within US Forest Service Lands.....FS Topo Data
with limited Forest Service updates, 2009
Names.....GNIS, 2011
Hydrography.....National Hydrography Dataset, 2010
Contours.....National Elevation Dataset, 2001
Boundaries.....Census, IBWC, IBC, USGS, 1972 - 2010



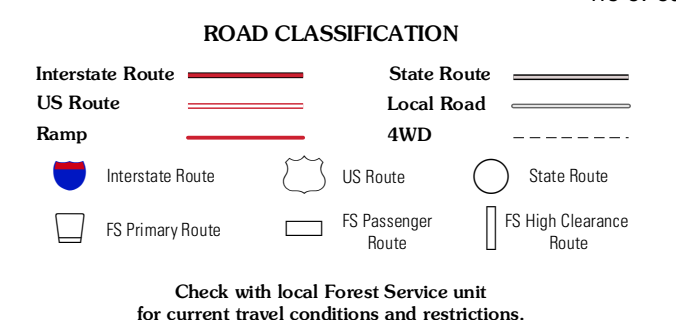
CONTOUR INTERVAL 40 FEET
NORTH AMERICAN VERTICAL DATUM OF 1988

This map was produced to conform with the National Geospatial Program US Topo Product Standard, 2011. A metadata file associated with this product is draft version 0.6.1



QUADRANGLE LOCATION

Case Mountain	Silver City	Mineral King
Dennison Peak	Moses Mountain	Quinn Peak
Springville	Camp Wilson	Camp Nelson



Check with local Forest Service unit for current travel conditions and restrictions.

MOSES MOUNTAIN, CA
2012

ADJOINING 7.5' QUADRANGLES