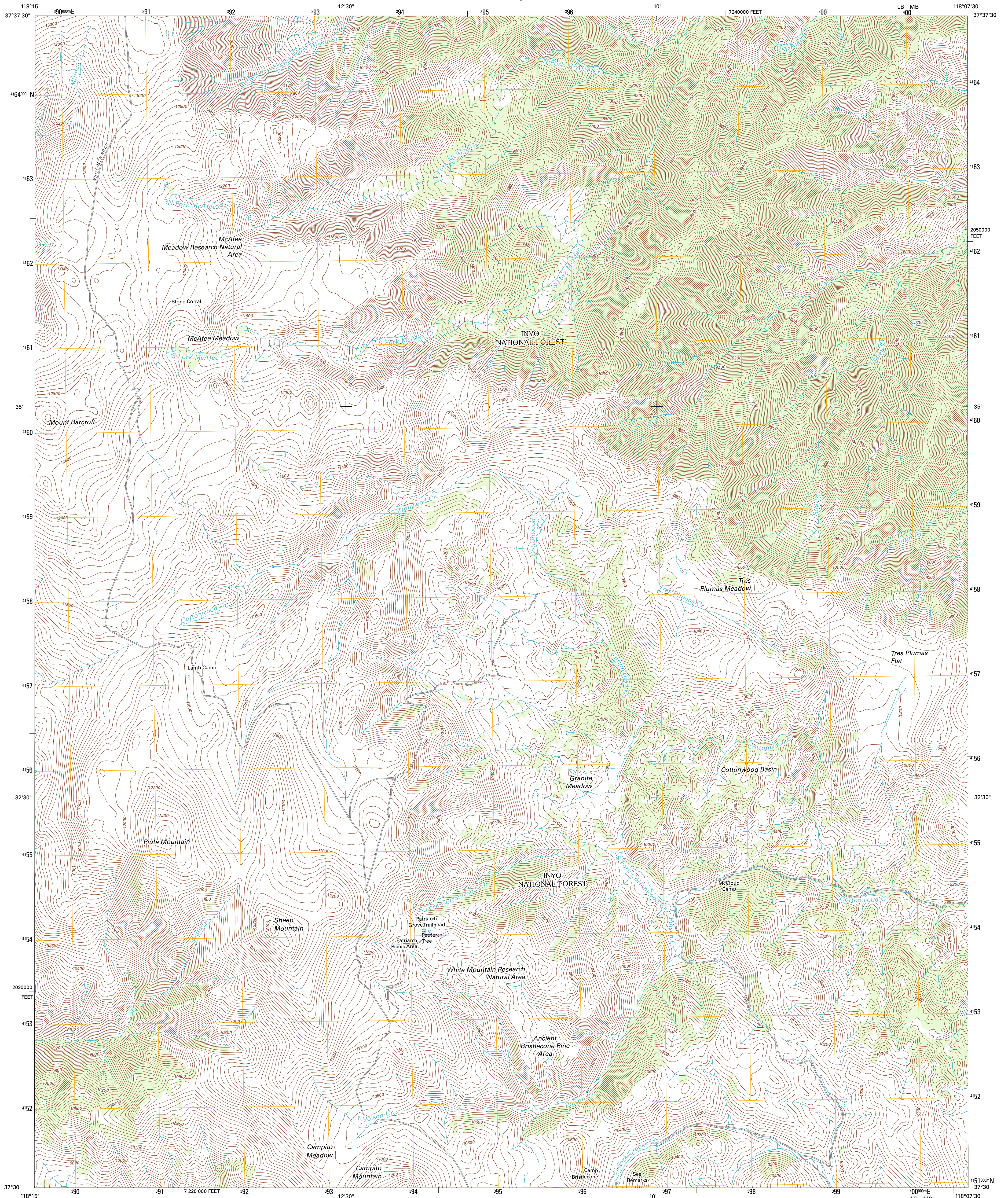




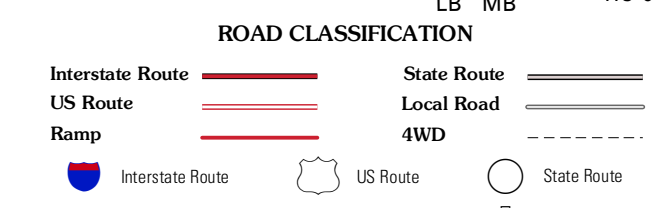
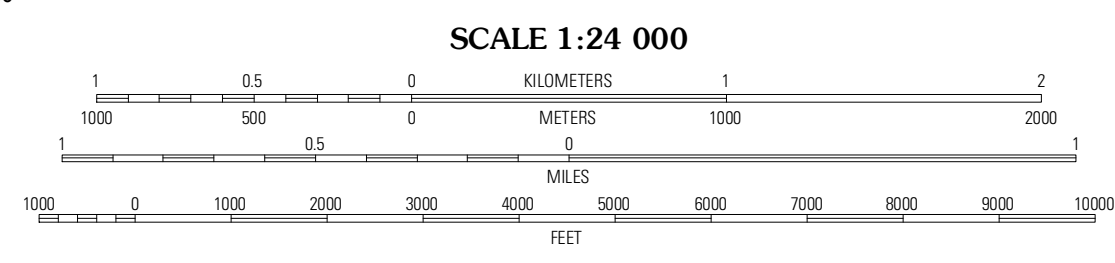
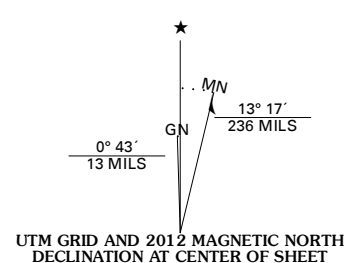
U.S. DEPARTMENT OF THE INTERIOR
U. S. GEOLOGICAL SURVEY



MOUNT BARCROFT QUADRANGLE
CALIFORNIA-MONO CO.
7.5-MINUTE SERIES



Produced by the United States Geological Survey
North American Datum of 1983 (NAD83)
World Geodetic System of 1984 (WGS84). Projection and
1 000-meter grid: Universal Transverse Mercator, Zone 11S
10 000-foot ticks: California Coordinate System of 1983
(zone 3)



QUADRANGLE LOCATION

White Mountain Peak	Juniper Mountain	Dyer
Chalfant Valley	Mount Barcroft	Station Peak
Laws	Blanco Mountain	Crooked Creek

ADJOINING 7.5 QUADRANGLES

Imagery:.....NAP, July 2010
Roads:.....©2006-2011 TomTom
Roads within US Forest Service Lands:.....FS Topo Data
with limited Forest Service updates, 2009
Names:.....GNIS, 2011
Hydrography:.....National Hydrography Dataset, 2010
Contours:.....National Elevation Dataset, 2001
Boundaries:.....Census, IBWC, IBC, USGS, 1972 - 2010

U.S. National Grid

100,000-m Square ID	10
UTM	11S
Grid Zone Designation	11S

CONTOUR INTERVAL 40 FEET
NORTH AMERICAN VERTICAL DATUM OF 1988

This map was produced to conform with the
National Geospatial Program US Topo Product Standard, 2011.
A metadata file associated with this product is draft version 0.6.1

Check with local Forest Service unit
for current travel conditions and restrictions.

MOUNT BARCROFT, CA
2012