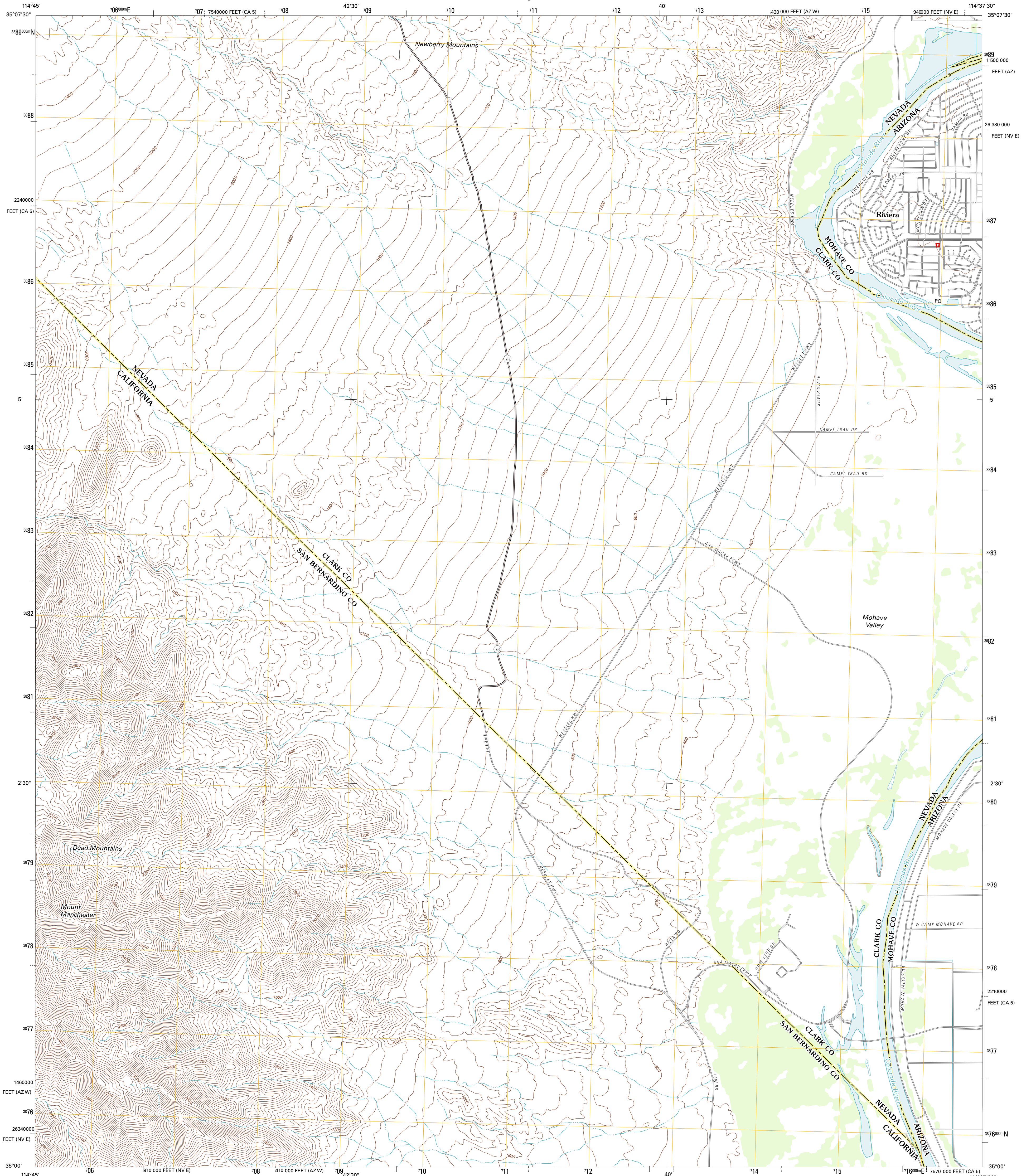




U.S. DEPARTMENT OF THE INTERIOR
U. S. GEOLOGICAL SURVEY

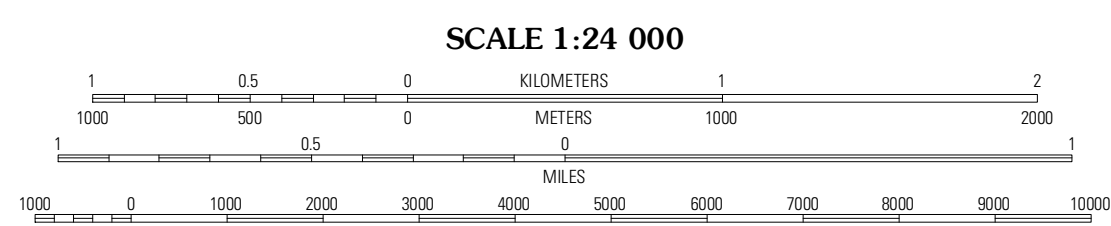
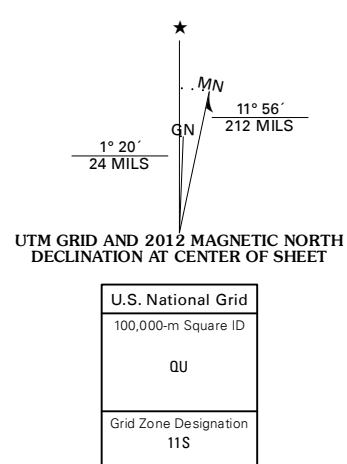


MOUNT MANCHESTER QUADRANGLE
CALIFORNIA-NEVADA-ARIZONA
7.5-MINUTE SERIES



Produced by the United States Geological Survey
North American Datum of 1983 (NAD83)
World Geodetic System of 1984 (WGS84). Projection and
1 000-foot ticks: Nevada Coordinate System of 1983 (east
zone), California Coordinate System of 1983 (zone 5),
Arizona Coordinate System of 1983 (west zone)

Imagery: N.A.P., May 2010
Roads: ©2006-2011 TomTom
Names: GNIS, 2011
Hydrography: National Hydrography Dataset, 2010
Contours: National Elevation Dataset, 2002
Boundaries: Census, IBWC, IBC, USGS, 1972 - 2010



CONTOUR INTERVAL 40 FEET
NORTH AMERICAN VERTICAL DATUM OF 1988

This map was produced to conform with the
National Geospatial Program US Topo Product Standard, 2011.
A metadata file associated with this product is draft version 0.6.1



QUADRANGLE LOCATION

Juniper Mine	Bridge Canyon	Davis Dam
East of Homer Mountain	Mount Manchester	Davis Dam SE
Bannock	Needles NW	Needles NE

ADJOINING 7.5' QUADRANGLES

ROAD CLASSIFICATION

Interstate Route	State Route
US Route	Local Road
Ramp	4WD

Interstate Route US Route State Route

MOUNT MANCHESTER, CA-NV-AZ
2012