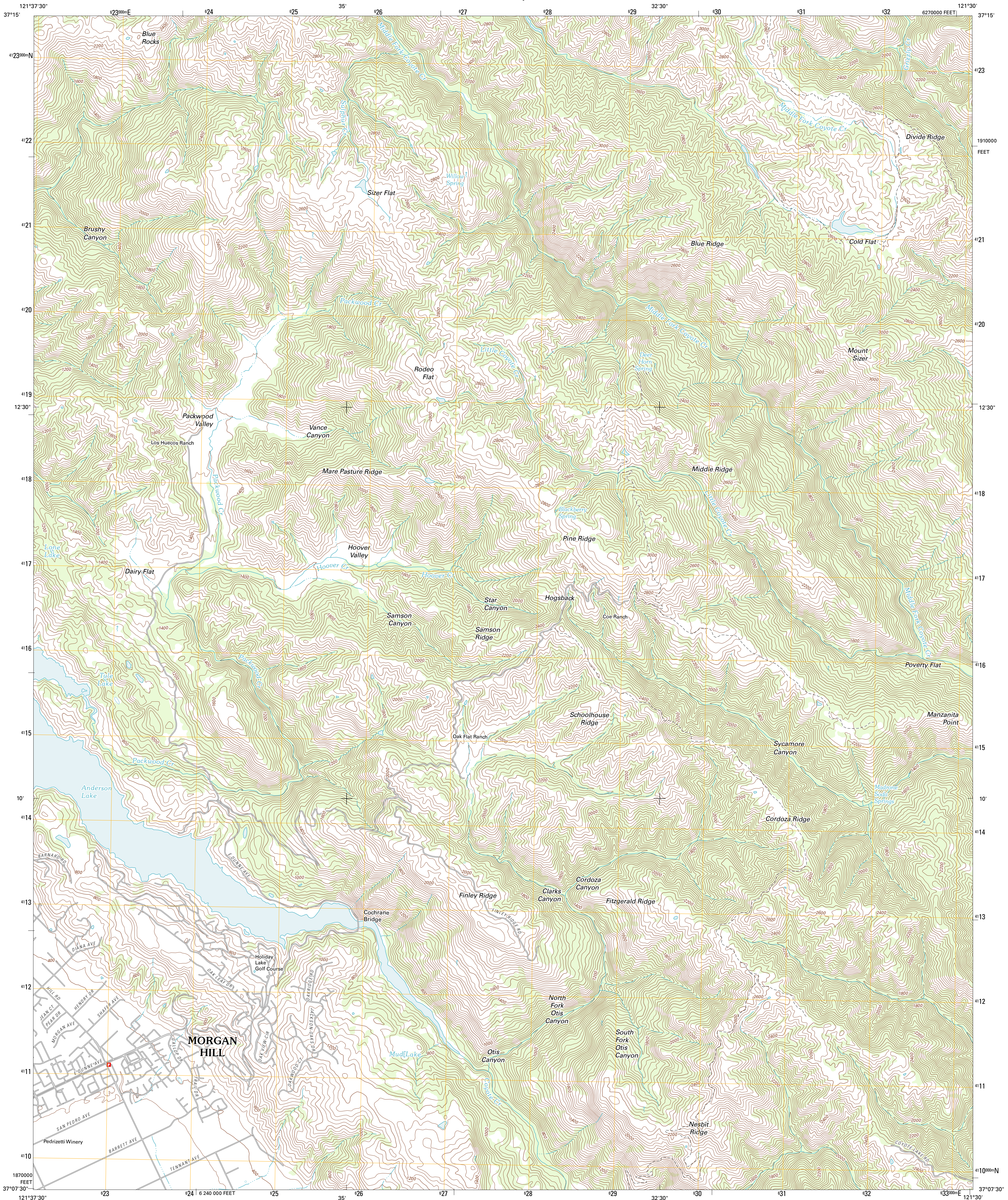




U.S. DEPARTMENT OF THE INTERIOR  
U. S. GEOLOGICAL SURVEY

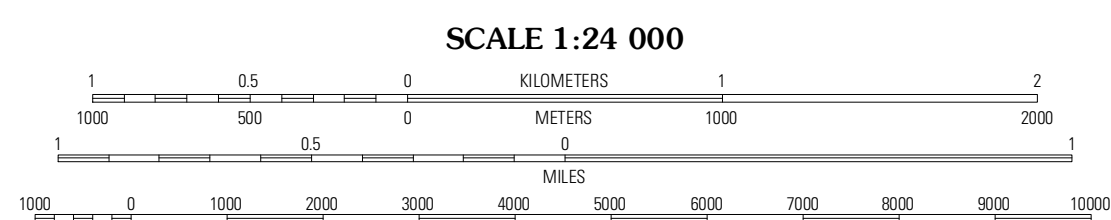
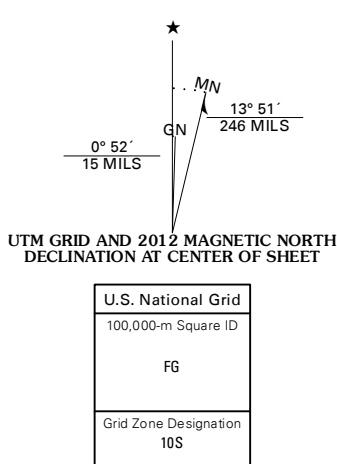


MOUNT SIZER QUADRANGLE  
CALIFORNIA-SANTA CLARA CO.  
7.5-MINUTE SERIES



Produced by the United States Geological Survey  
North American Datum of 1983 (NAD83)  
World Geodetic System of 1984 (WGS84). Projection and  
10 000-foot ticks: California Coordinate System of 1983  
(zone 3)

Imagery.....NAIP, July 2010  
Roads.....©2006-2011 TomTom  
Names.....GNIS, 2011  
Hydrography.....National Hydrography Dataset, 2010  
Contours.....National Elevation Dataset, 1999  
Boundaries.....Census, BWC, BIC, USGS, 1972 - 2010



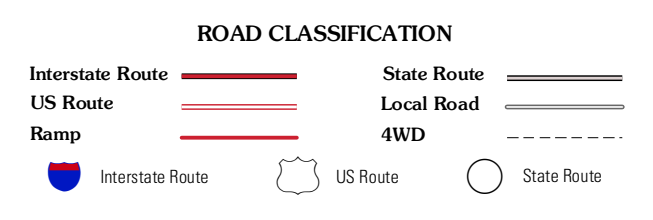
CONTOUR INTERVAL 40 FEET  
NORTH AMERICAN VERTICAL DATUM OF 1988

This map was produced to conform with the  
National Geospatial Program US Topo Product Standard, 2011.  
A metadata file associated with this product is draft version 0.6.1



QUADRANGLE LOCATION

|                     |                  |                       |
|---------------------|------------------|-----------------------|
| Lick<br>Observatory | Isabel<br>Valley | Mount<br>Stakes       |
| Morgan<br>Hill      | Mount<br>Sizer   | Mississippi<br>Creek  |
| Mount<br>Madonna    | Gilroy           | Gilroy Hot<br>Springs |



MOUNT SIZER, CA  
2012

ADJOINING 7.5 QUADRANGLES