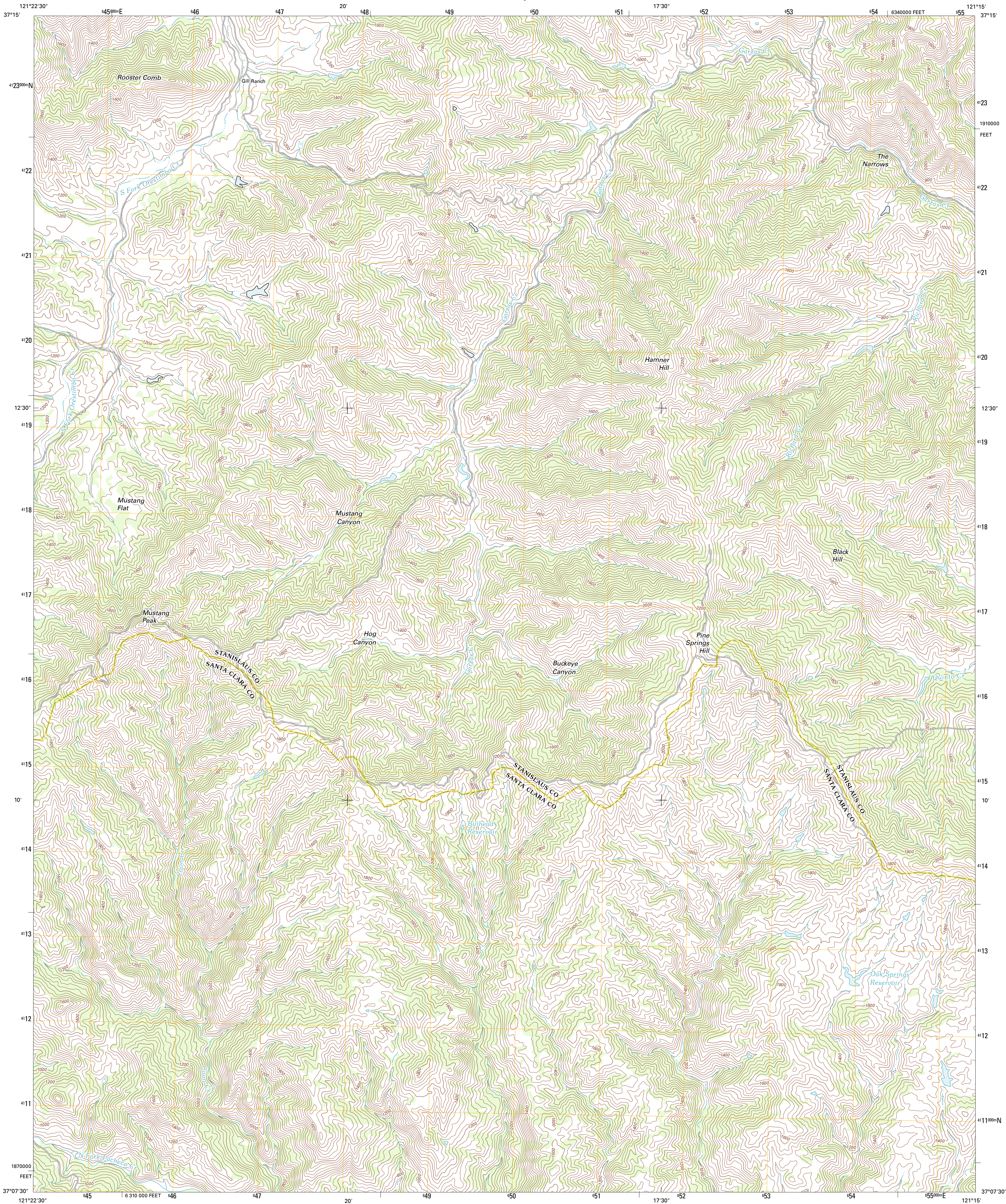




U.S. DEPARTMENT OF THE INTERIOR
U. S. GEOLOGICAL SURVEY

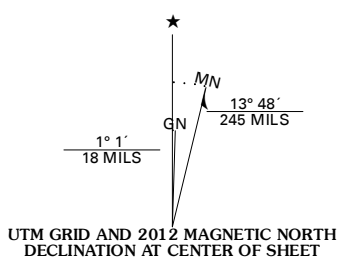


MUSTANG PEAK QUADRANGLE
CALIFORNIA
7.5-MINUTE SERIES

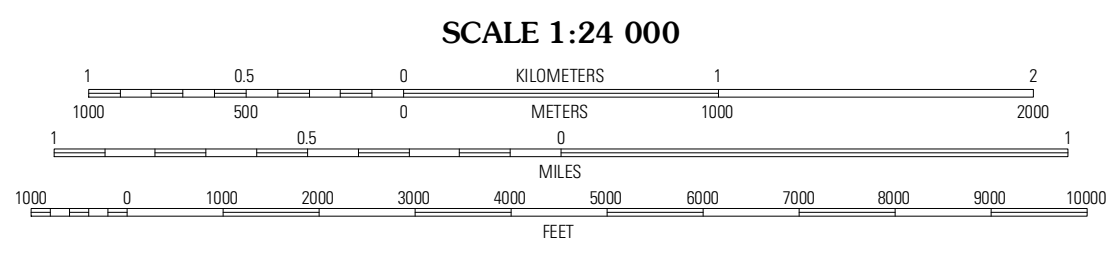


Produced by the United States Geological Survey
North American Datum of 1983 (NAD83)
World Geodetic System of 1984 (WGS84). Projection and
1 000-meter grid: Universal Transverse Mercator, Zone 10S
10 000-foot ticks: California Coordinate System of 1983
(zone 3)

Imagery.....NAIP, July 2010 - September 2010
Roads.....©2006-2011 TomTom
Names.....GNIS, 2011
Hydrography.....National Hydrography Dataset, 2010
Contours.....National Elevation Dataset, 2008
Boundaries.....Census, BWC, IBC, USGS, 1972 - 2010



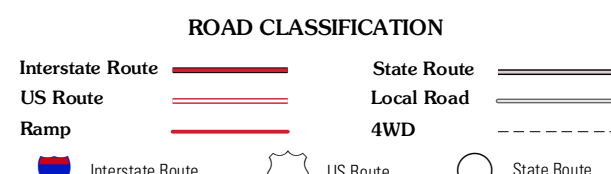
U.S. National Grid
100,000-m Square ID
76
Grid Zone Designation
10S



CONTOUR INTERVAL 40 FEET
NORTH AMERICAN VERTICAL DATUM OF 1988
This map was produced to conform with the
National Geospatial Program US Topo Product Standard, 2011.
A metadata file associated with this product is draft version 0.6.1



Mount Stakes	Wilcox Ridge	Orestimba Peak
Mississippi Creek	Mustang Peak	Crewson Peak
Gilroy Hot Springs	Pacheco Peak	Pacheco Pass



MUSTANG PEAK, CA
2012