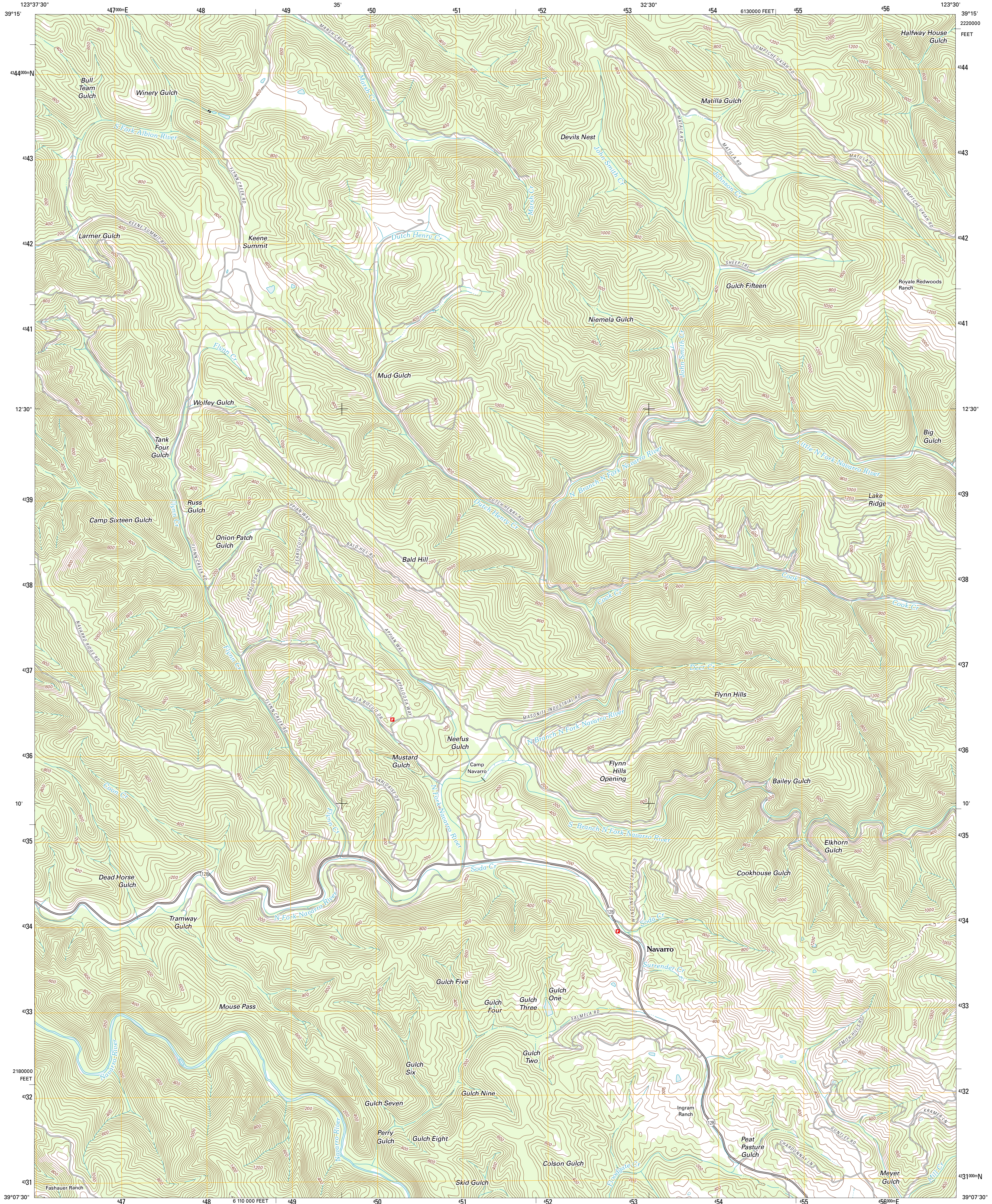




U.S. DEPARTMENT OF THE INTERIOR  
U. S. GEOLOGICAL SURVEY

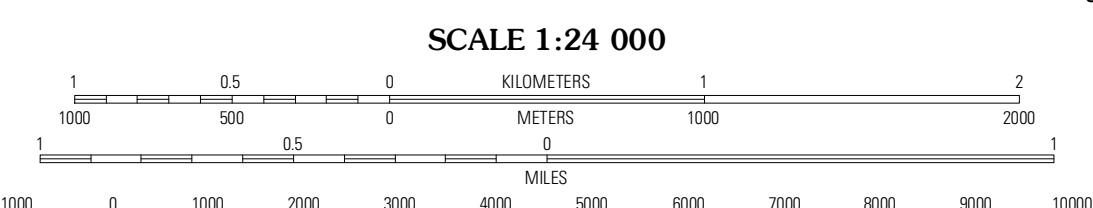
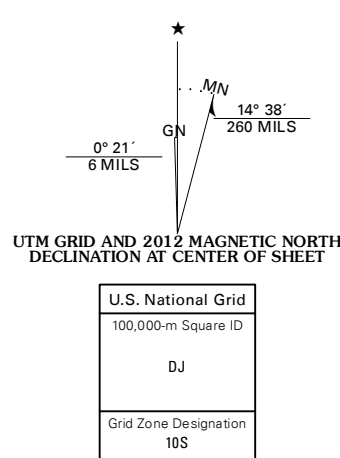


NAVARRO QUADRANGLE  
CALIFORNIA-MENDOCINO CO.  
7.5-MINUTE SERIES



Produced by the United States Geological Survey  
North American Datum of 1983 (NAD83)  
World Geodetic System of 1984 (WGS84). Projection and  
1 000-meter grid: Universal Transverse Mercator, Zone 10S  
10 000-foot ticks: California Coordinate System of 1983  
(zone 2)

Imagery:.....N.A.I.P., June 2010  
Roads:.....©2006-2011 TomTom  
Names:.....©2006-2011 TomTom  
Hydrography:.....National Hydrography Dataset, 2010  
Contours:.....National Elevation Dataset, 1999  
Boundaries:.....Census, IBWC, IBC, USGS, 1972 - 2010

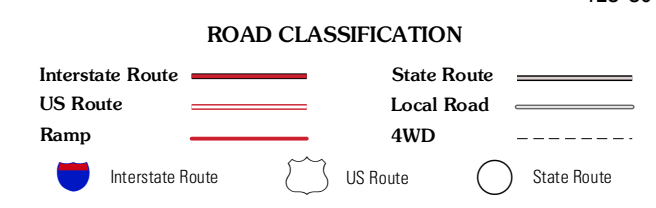


CONTOUR INTERVAL 40 FEET  
NORTH AMERICAN VERTICAL DATUM OF 1988  
This map was produced to conform with the  
National Geospatial Program US Topo Product Standard, 2011.  
A metadata file associated with this product is draft version 0.6.1



QUADRANGLE LOCATION

Mathison Peak	Compiche	Greenough Ridge
Elk	Navarro	Bailey Ridge
Mallo Pass Creek	Cool Spring	Philo



NAVARRO, CA  
2012