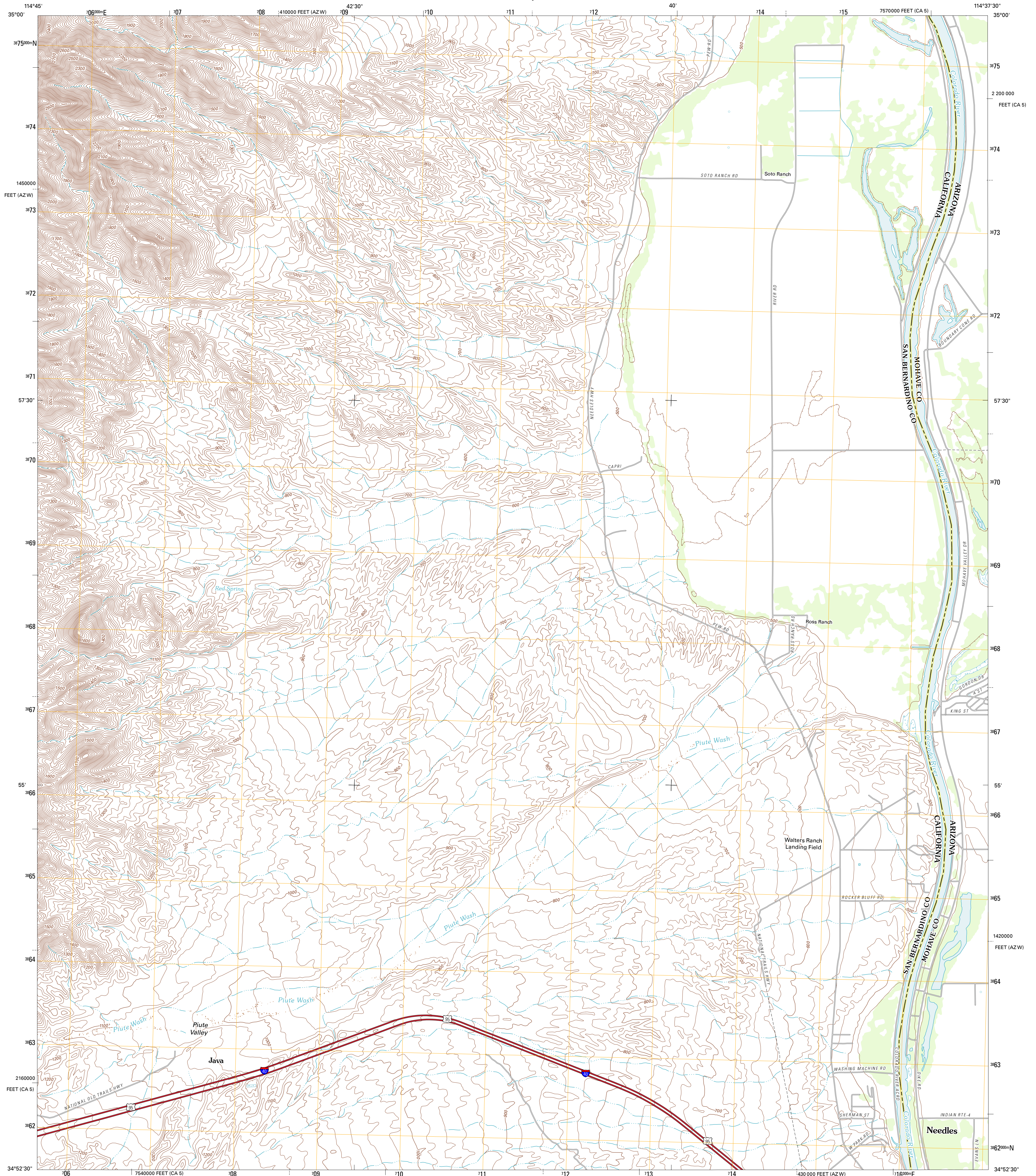




U.S. DEPARTMENT OF THE INTERIOR  
U. S. GEOLOGICAL SURVEY

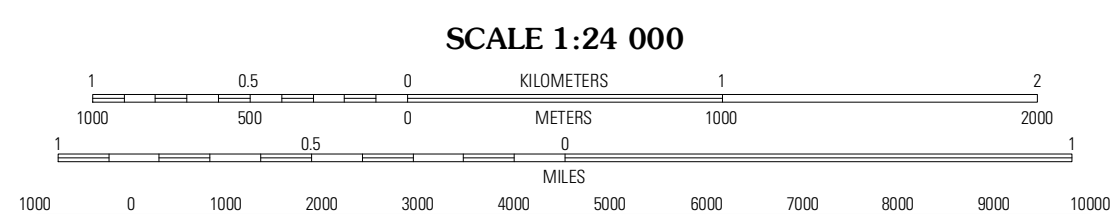
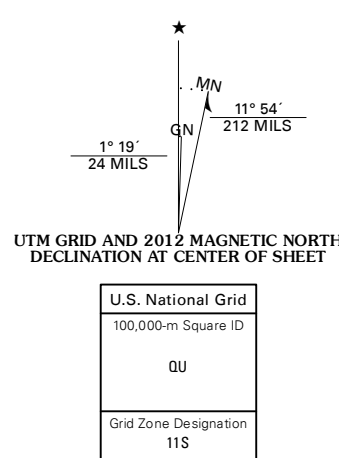


NEEDLES NW QUADRANGLE  
CALIFORNIA-ARIZONA  
7.5-MINUTE SERIES



Produced by the United States Geological Survey  
North American Datum of 1983 (NAD83)  
World Geodetic System of 1984 (WGS84) Projection and  
1 000-meter grid: Universal Transverse Mercator, Zone 11S  
10 000-foot ticks: California Coordinate System of 1983  
(zone 5), Arizona Coordinate System of 1983 (west zone)

Imagery: N.A.P., April 2010  
Roads: ©2006-2011 TomTom  
Names: National Hydrography Dataset, 2010  
Contours: National Elevation Dataset, 2002  
Boundaries: Census, IBWC, IBC, USGS, 1972 - 2010



CONTOUR INTERVAL 20 FEET  
NORTH AMERICAN VERTICAL DATUM OF 1988

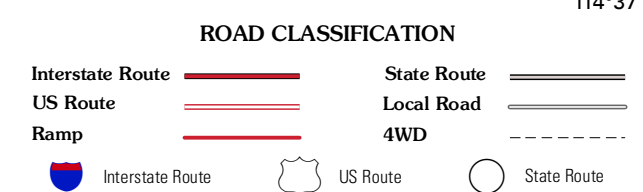
This map was produced to conform with the  
National Geospatial Program US Topo Product Standard, 2011.  
A metadata file associated with this product is draft version 0.6.1



QUADRANGLE LOCATION

East of Homer Mountain	Mount Manchester	Davis Dam SE
Buncock	Needles NW	Needles NE
Flattop Mountain	Needles SW	Needles

ADJOINING 7.5 QUADRANGLES



NEEDLES NW, CA-AZ  
2012