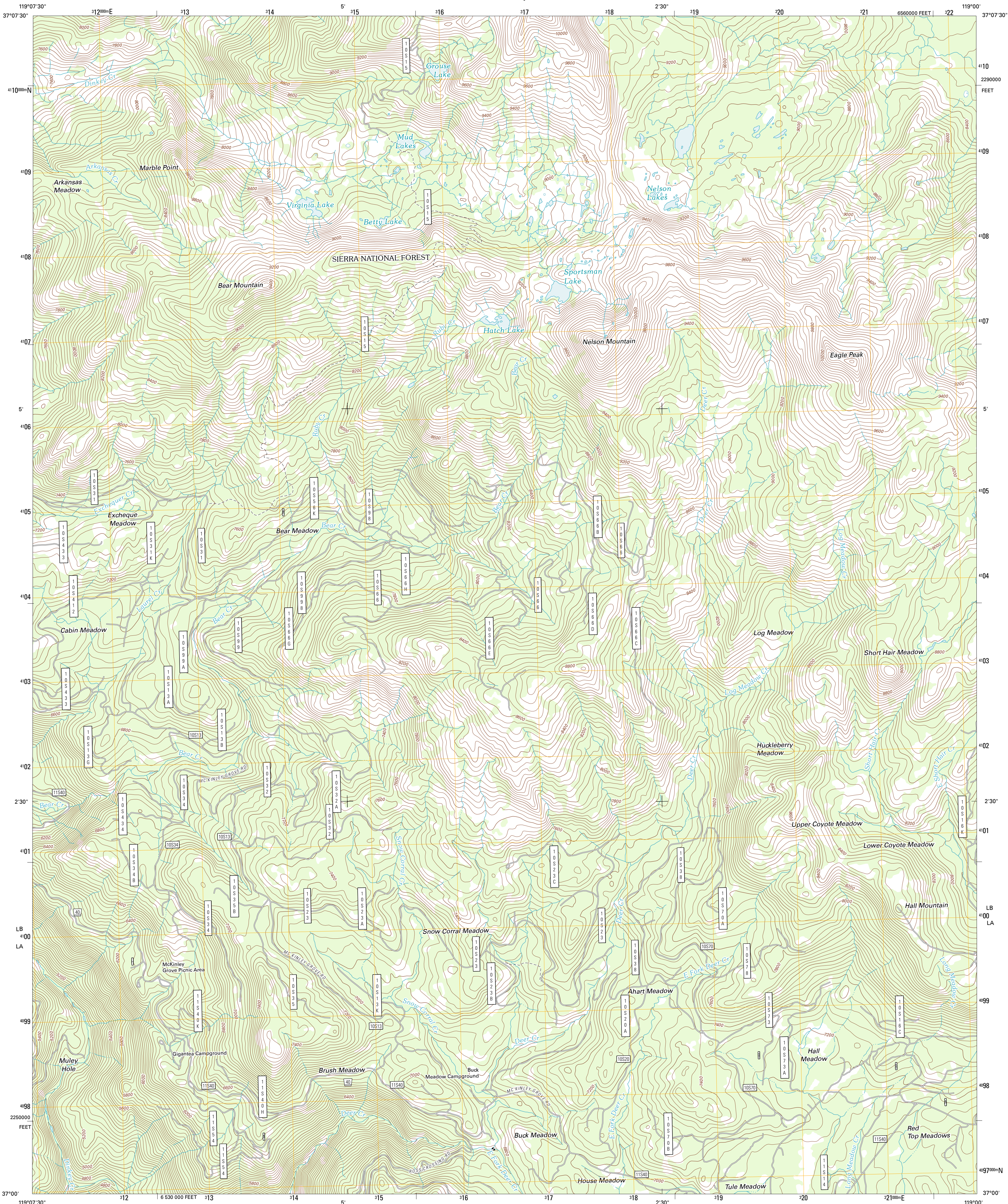




U.S. DEPARTMENT OF THE INTERIOR  
U. S. GEOLOGICAL SURVEY

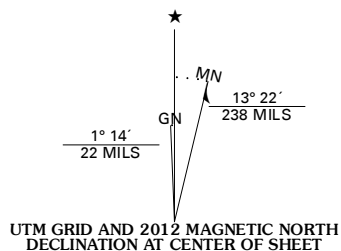


NELSON MOUNTAIN QUADRANGLE  
CALIFORNIA-FRESNO CO.  
7.5-MINUTE SERIES

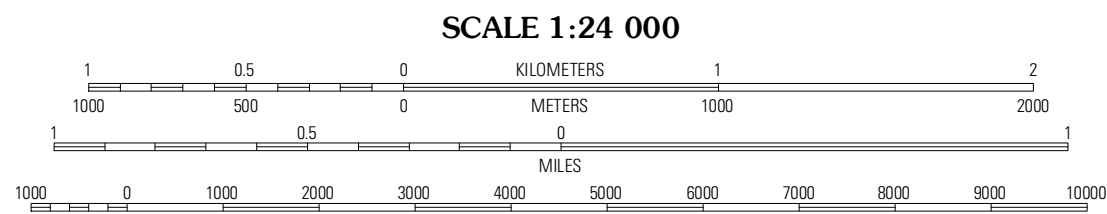


Produced by the United States Geological Survey  
North American Datum of 1983 (NAD83)  
World Geodetic System of 1984 (WGS84). Projection and  
1 000-meter grid: Universal Transverse Mercator, Zone 11 S  
10 000-foot ticks: California Coordinate System of 1983  
(zone 4)

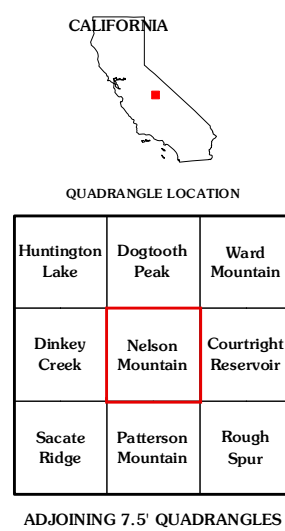
Imagery.....NAIP, August 2010  
Roads.....©2006-2011 TomTom  
Roads within US Forest Service Lands.....FS Topo Data  
with limited Forest Service updates, 2009  
Names.....GNIS, 2011  
Hydrography.....National Hydrography Dataset, 2010  
Contours.....National Elevation Dataset, 1999  
Boundaries.....Census, IBWC, IBC, USGS, 1972 - 2010



| U.S. National Grid    |
|-----------------------|
| 100,000m Square ID    |
| LB                    |
| LA                    |
| Grid Zone Designation |
| 11S                   |



CONTOUR INTERVAL 40 FEET  
NORTH AMERICAN VERTICAL DATUM OF 1988  
This map was produced to conform with the  
National Geospatial Program US Topo Product Standard, 2011.  
A metadata file associated with this product is draft version 0.6.1



| ROAD CLASSIFICATION |                    |                         |     |
|---------------------|--------------------|-------------------------|-----|
| Interstate Route    | State Route        | Local Road              | 4WD |
| US Route            |                    |                         |     |
| Ramp                |                    |                         |     |
| FS Primary Route    | FS Passenger Route | FS High Clearance Route |     |

NELSON MOUNTAIN, CA  
2012