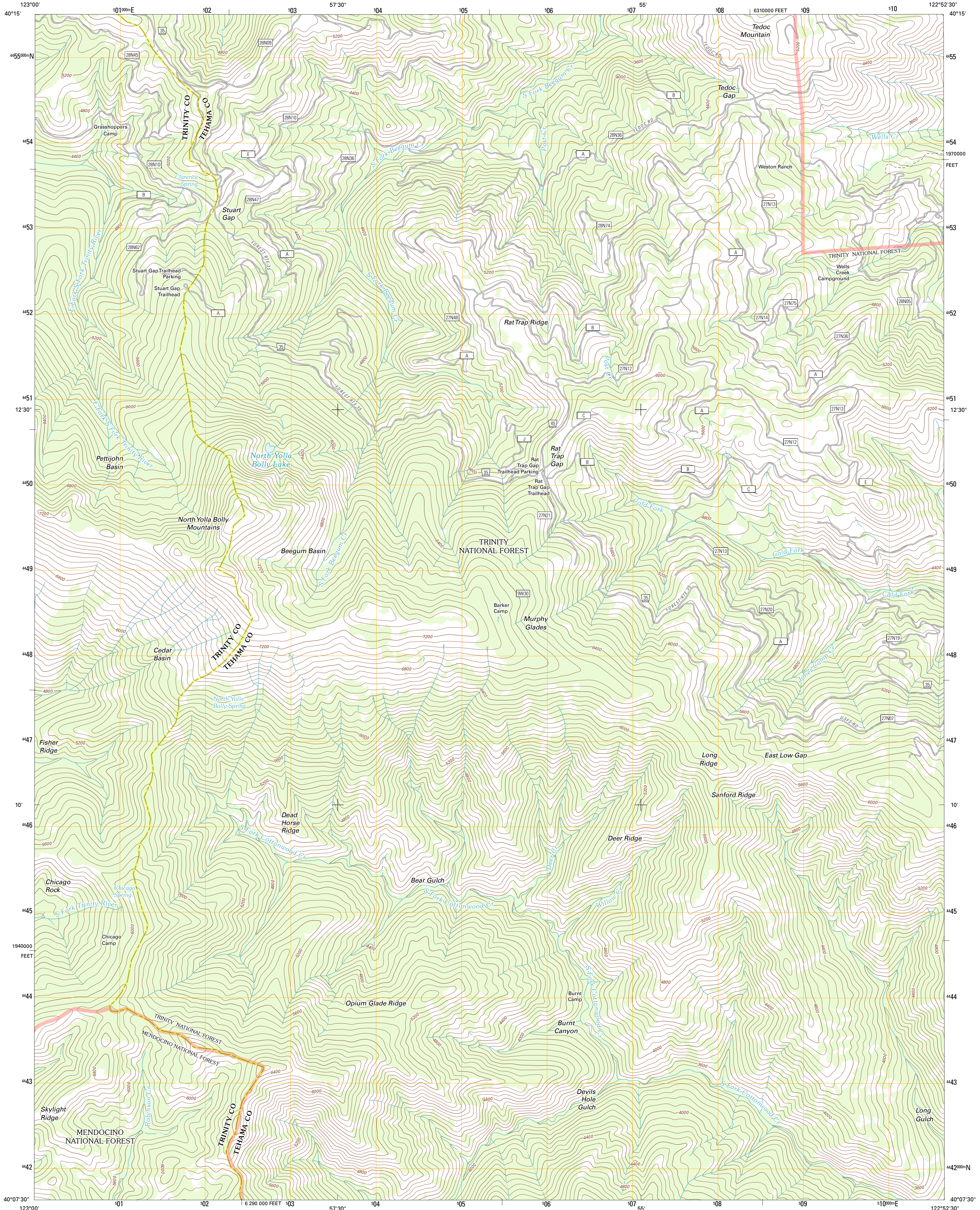




U.S. DEPARTMENT OF THE INTERIOR
U. S. GEOLOGICAL SURVEY

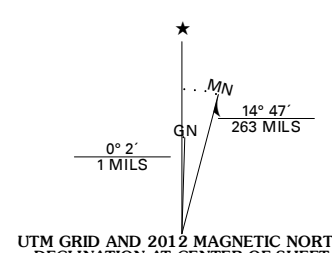


NORTH YOLLA BOLLY MOUNTAINS QUADRANGLE
CALIFORNIA
7.5-MINUTE SERIES

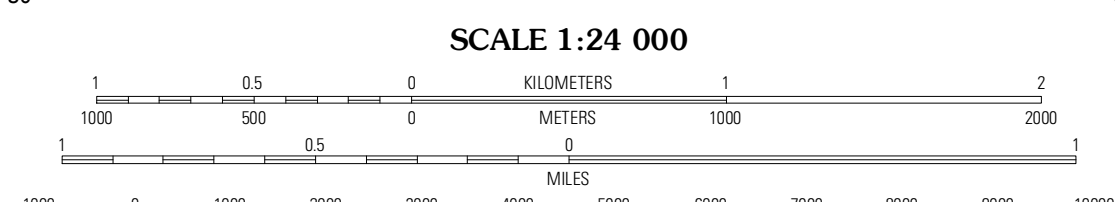


Produced by the United States Geological Survey
North American Datum of 1983 (NAD83)
World Geodetic System of 1984 (WGS84). Projection and
1 000-meter grid: Universal Transverse Mercator, Zone 10T
10 000-foot ticks: California Coordinate System of 1983
(zone 1)

Imagery: N.A.P., July 2010
Roads: ©2006-2011 TomTom
Roads within US Forest Service Lands
with limited Forest Service updates, 2009
Names: G.N.S., 2011
Hydrography: National Hydrography Dataset, 2010
Contours: National Elevation Dataset, 2000
Boundaries: Census, BWC, B.C., USGS, 1972-2010



U.S. National Grid
100,000m Square ID
EK
Grid Zone Designation
10T



CONTOUR INTERVAL 80 FEET
NORTH AMERICAN VERTICAL DATUM OF 1988
This map was produced to conform with the
National Geospatial Program US Topo Product Standard, 2011.
A metadata file associated with this product is draft version 0.6.1



QUADRANGLE LOCATION

Pony Beck Peak	Platina	Beegum
Black Rock Mountain	North Yolla Bolly Mountains	Tomhead Mountain
Wrights Ridge	Solomon Peak	South Yolla Bolly Mountains

ADJOINING 7.5' QUADRANGLES

ROAD CLASSIFICATION

Interstate Route	State Route
US Route	Local Road
Ramp	4WD
FS Primary Route	FS Passenger Route
	FS High Clearance Route

Check with local Forest Service unit
for current travel conditions and restrictions.

NORTH YOLLA BOLLY MOUNTAINS, CA
2012