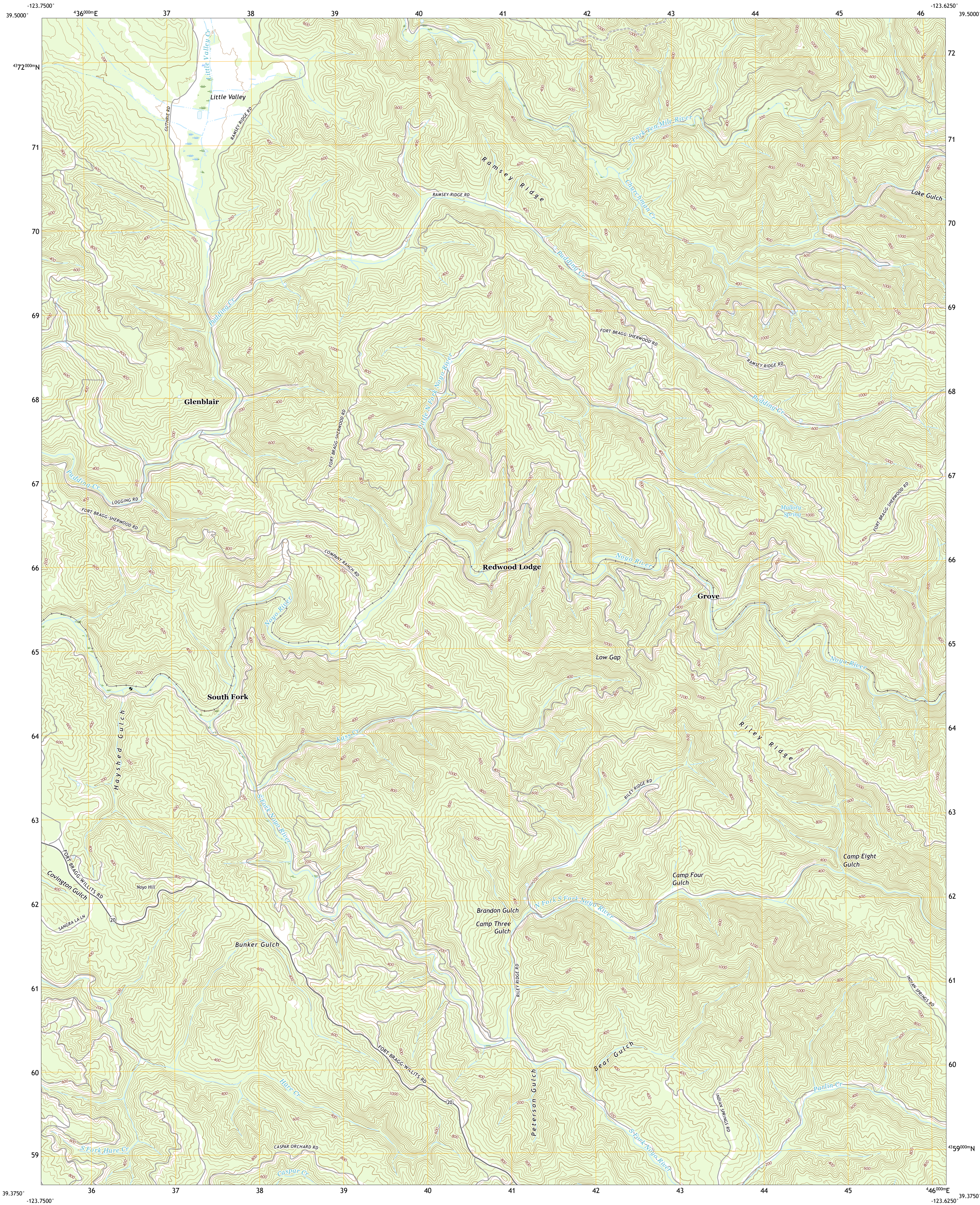




U.S. DEPARTMENT OF THE INTERIOR
U.S. GEOLOGICAL SURVEY



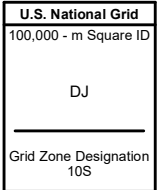
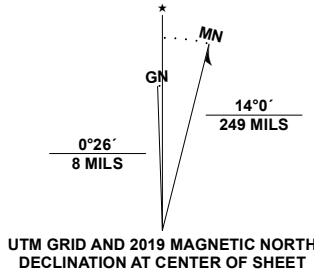
NOYO HILL QUADRANGLE
CALIFORNIA - MENDOCINO COUNTY
7.5-MINUTE SERIES



Produced by the United States Geological Survey

North American Datum of 1983 (NAD83)
World Geodetic System of 1984 (WGS84). Projection and
1 000-meter grid/Universal Transverse Mercator, Zone 10S
This map is not a legal document. Boundaries may be
generalized for this map scale. Private lands within government
reservations may not be shown. Obtain permission before
entering private lands.

Imagery.....NAIP, June 2020 - June 2020
Roads.....U.S. Census Bureau, 2016
Names.....GNIS, 1981 - 2021
Hydrography.....National Hydrography Dataset, 2004 - 2019
Contours.....National Elevation Dataset, 2018
Boundaries.....Multiple sources: see metadata file, 2019 - 2021
Public Land Survey System.....BLM, 2020
Wetlands.....FWS National Wetlands Inventory 1976 - 2002

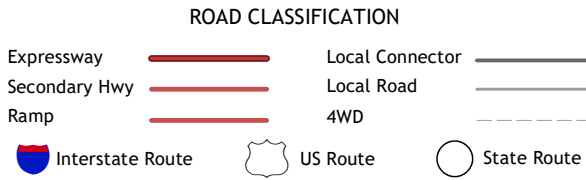


CONTOUR INTERVAL 40 FEET
NORTH AMERICAN VERTICAL DATUM OF 1988
This map was produced to conform with the
National Geospatial Program US Topo Product Standard.



1	2	3
4	5	6
7	8	9

- 1 Inglenook
- 2 Dutchmans Knoll
- 3 Sherwood Peak
- 4 Fort Briggs
- 5 Northspur
- 6 Mendocino
- 7 Mathison Peak
- 8 Comptche



NOYO HILL, CA
2021

