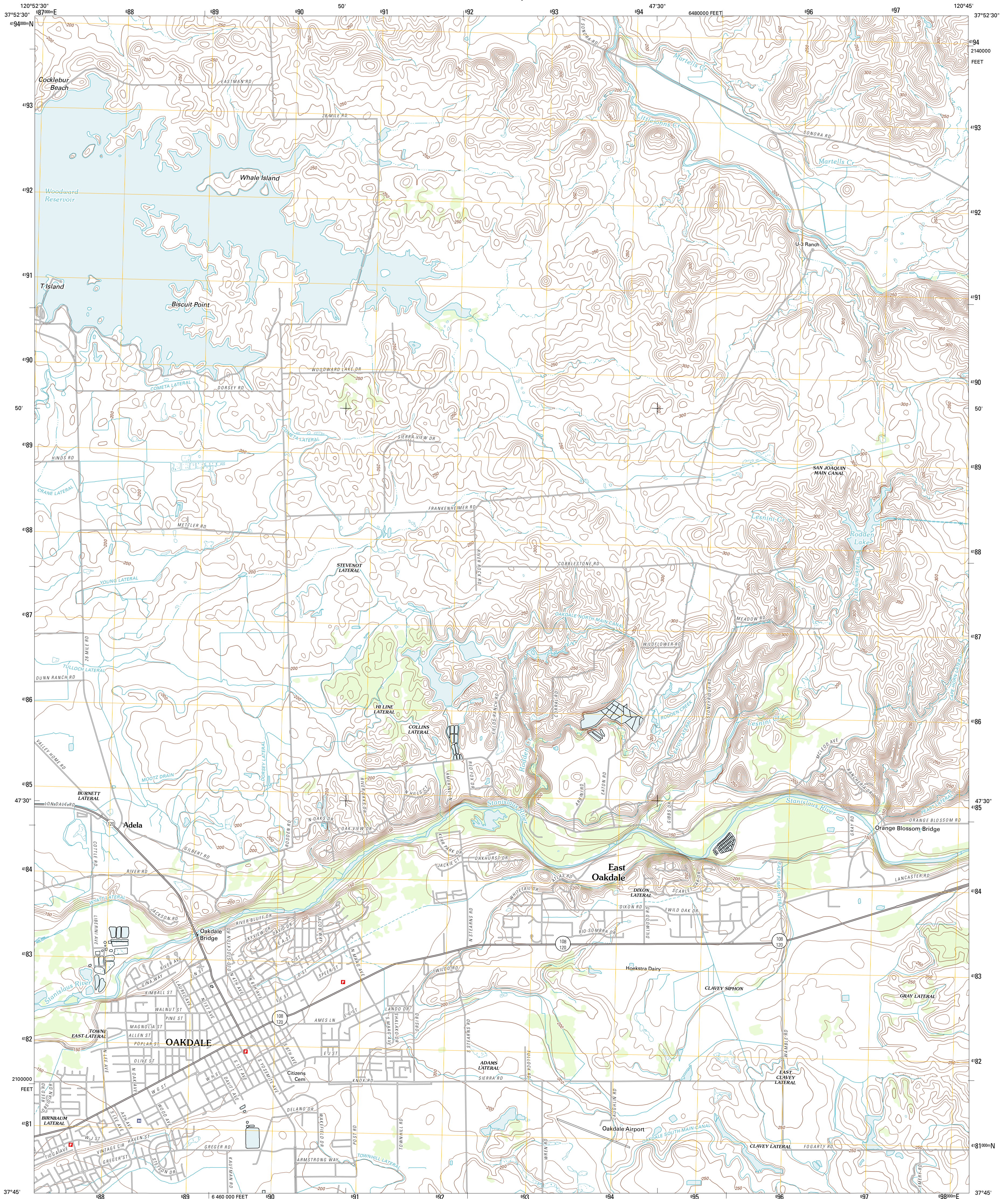




U.S. DEPARTMENT OF THE INTERIOR  
U. S. GEOLOGICAL SURVEY

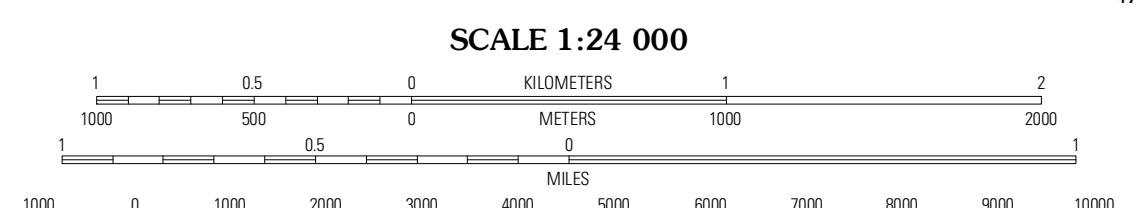
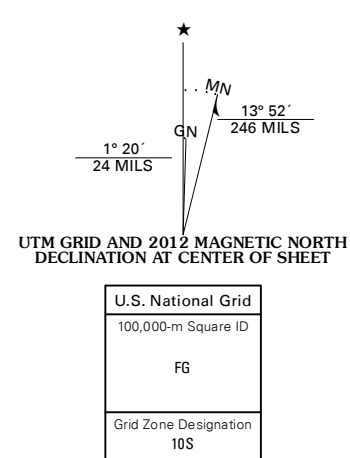


OAKDALE QUADRANGLE  
CALIFORNIA-STANISLAUS CO.  
7.5-MINUTE SERIES

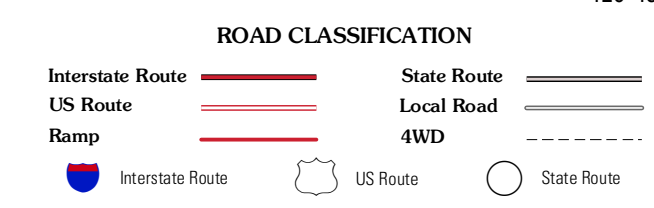


Produced by the United States Geological Survey  
North American Datum of 1983 (NAD83)  
World Geodetic System of 1984 (WGS84). Projection and  
1 000-meter grid: Universal Transverse Mercator, Zone 10S  
10 000-foot ticks: California Coordinate System of 1983  
(zone 3)

Imagery: N.A.I.P., July 2010  
Roads: ©2006-2011 TomTom  
Names: ©2006-2011 TomTom  
Hydrography: National Hydrography Dataset, 2010  
Contours: National Elevation Dataset, 2008  
Boundaries: Census, IBWC, IBC, USGS, 1972 - 2010



CONTOUR INTERVAL 10 FEET  
NORTH AMERICAN VERTICAL DATUM OF 1988  
This map was produced to conform with the  
National Geospatial Program US Topo Product Standard, 2011.  
A metadata file associated with this product is draft version 0.6.1



QUADRANGLE LOCATION

Farmington	Bachelor Valley	Copperopolis
Escalon	<b>Oakdale</b>	Knights Ferry
Riverbank	Waterford	Paulsill

ADJOINING 7.5' QUADRANGLES

OAKDALE, CA  
2012