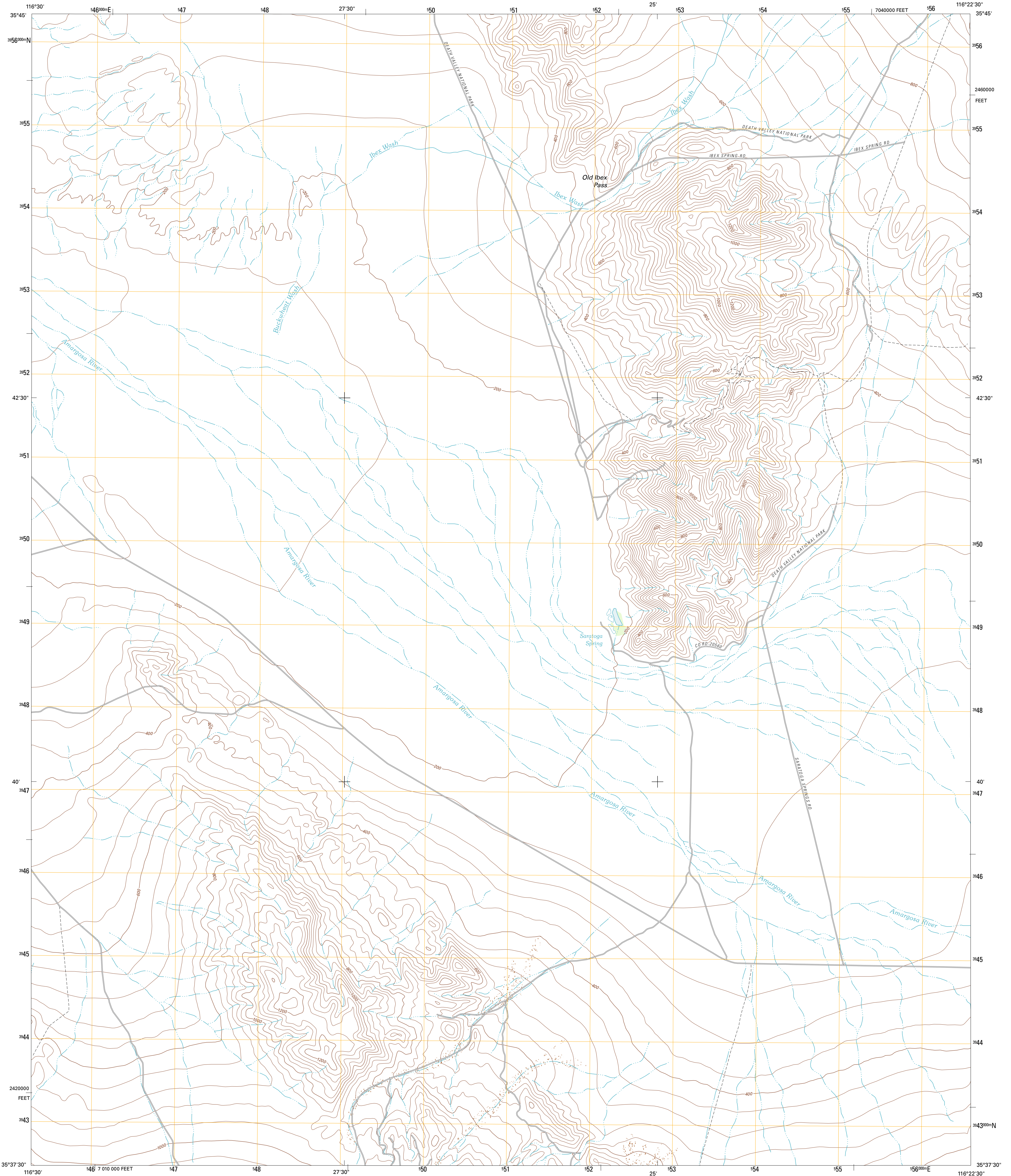




U.S. DEPARTMENT OF THE INTERIOR
U. S. GEOLOGICAL SURVEY

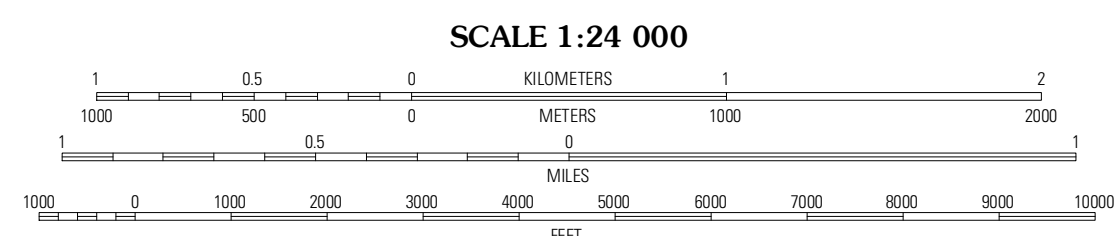
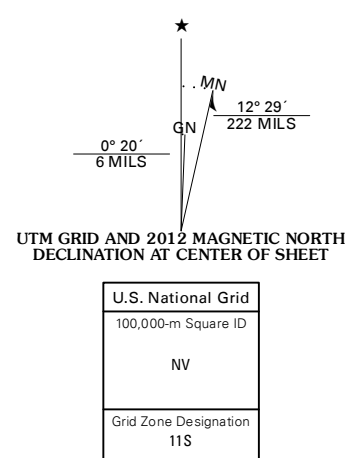


OLD IBEX PASS QUADRANGLE
CALIFORNIA-SAN BERNARDINO CO.
7.5-MINUTE SERIES



Produced by the United States Geological Survey
North American Datum of 1983 (NAD83)
World Geodetic System of 1984 (WGS84) Projection and
1 000-meter grid: Universal Transverse Mercator, Zone 11S
10 000-foot ticks: California Coordinate System of 1983
(zone 5)

Imagery.....NAIP, June 2010
Roads.....©2006-2011 TomTom
Names.....GNIS, 2011
Hydrography.....National Hydrography Dataset, 2010
Contours.....National Elevation Dataset, 2005
Boundaries.....Census, BWC, IBC, USGS, 1972-2010



CONTOUR INTERVAL 40 FEET
NORTH AMERICAN VERTICAL DATUM OF 1988
This map was produced to conform with the
National Geospatial Program US Topo Product Standard, 2011.
A metadata file associated with this product is draft version 0.6.1



QUADRANGLE LOCATION

Confidence Hills East	Ixex Spring	Ixex Pass
East of Owl Lake	Old Ixex Pass	Saddle Peak Hills
East of Larch Lake	Awawatz Pass	Sheep Creek Spring

ROAD CLASSIFICATION

- Interstate Route (thick red line)
- US Route (red line)
- State Route (grey line)
- Local Road (thin grey line)
- 4WD (dashed line)

OLD IBEX PASS, CA
2012

ADJOINING 7.5' QUADRANGLES