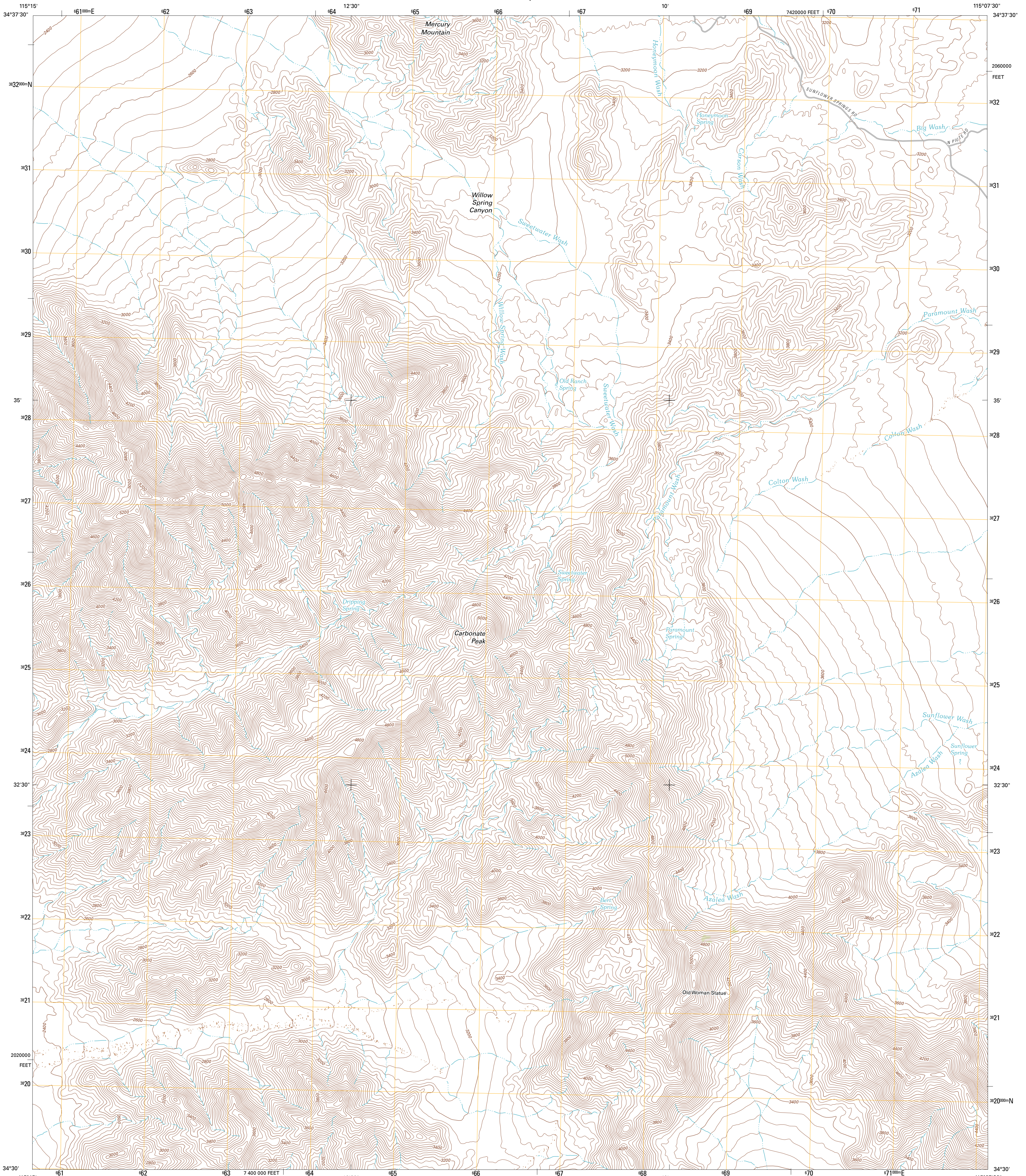




U.S. DEPARTMENT OF THE INTERIOR
U. S. GEOLOGICAL SURVEY

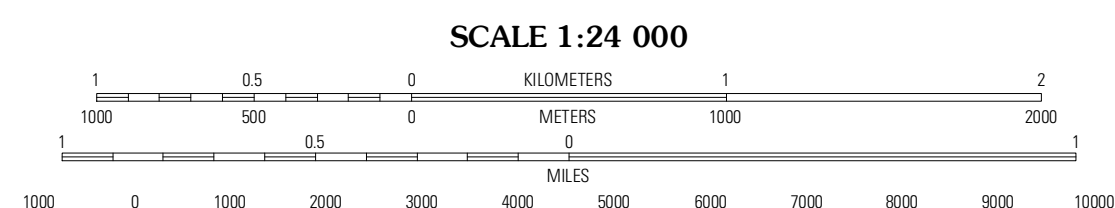
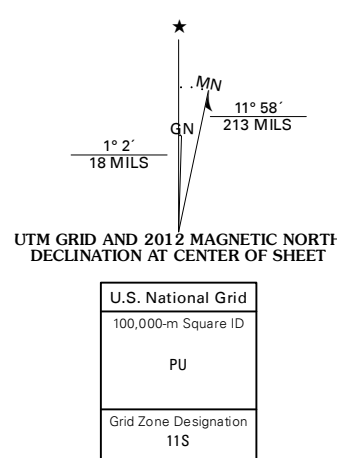


OLD WOMAN STATUE QUADRANGLE
CALIFORNIA-SAN BERNARDINO CO.
7.5-MINUTE SERIES



Produced by the United States Geological Survey
North American Datum of 1983 (NAD83)
World Geodetic System of 1984 (WGS84) Projection and
1 000-meter grid: Universal Transverse Mercator, Zone 11S
10 000-foot ticks: California Coordinate System of 1983
(zone 5)

Imagery.....N.A.P., May 2010
Roads.....©2006-2011 TomTom
Names.....GNIS, 2011
Hydrography.....National Hydrography Dataset, 2010
Contours.....National Elevation Dataset, 2006
Boundaries.....Census, BWC, IBC, USGS, 1972 - 2010



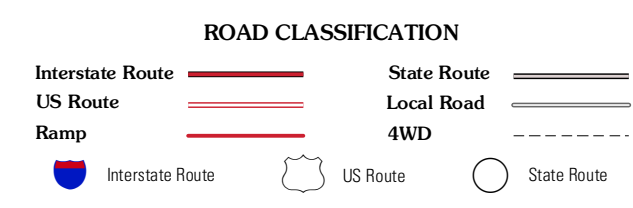
CONTOUR INTERVAL 40 FEET
NORTH AMERICAN VERTICAL DATUM OF 1988

This map was produced to conform with the
National Geospatial Program US Topo Product Standard, 2011.
A metadata file associated with this product is draft version 0.6.1



QUADRANGLE LOCATION

Danby	Essex	Little Plaine Mountains
Skeleton Pass	Old Woman Statue	Pointed Rock Wash
Cadiz Lake NE	Sheep Camp Spring	Wilhelm Spring



OLD WOMAN STATUE, CA
2012

ADJOINING 7.5 QUADRANGLES