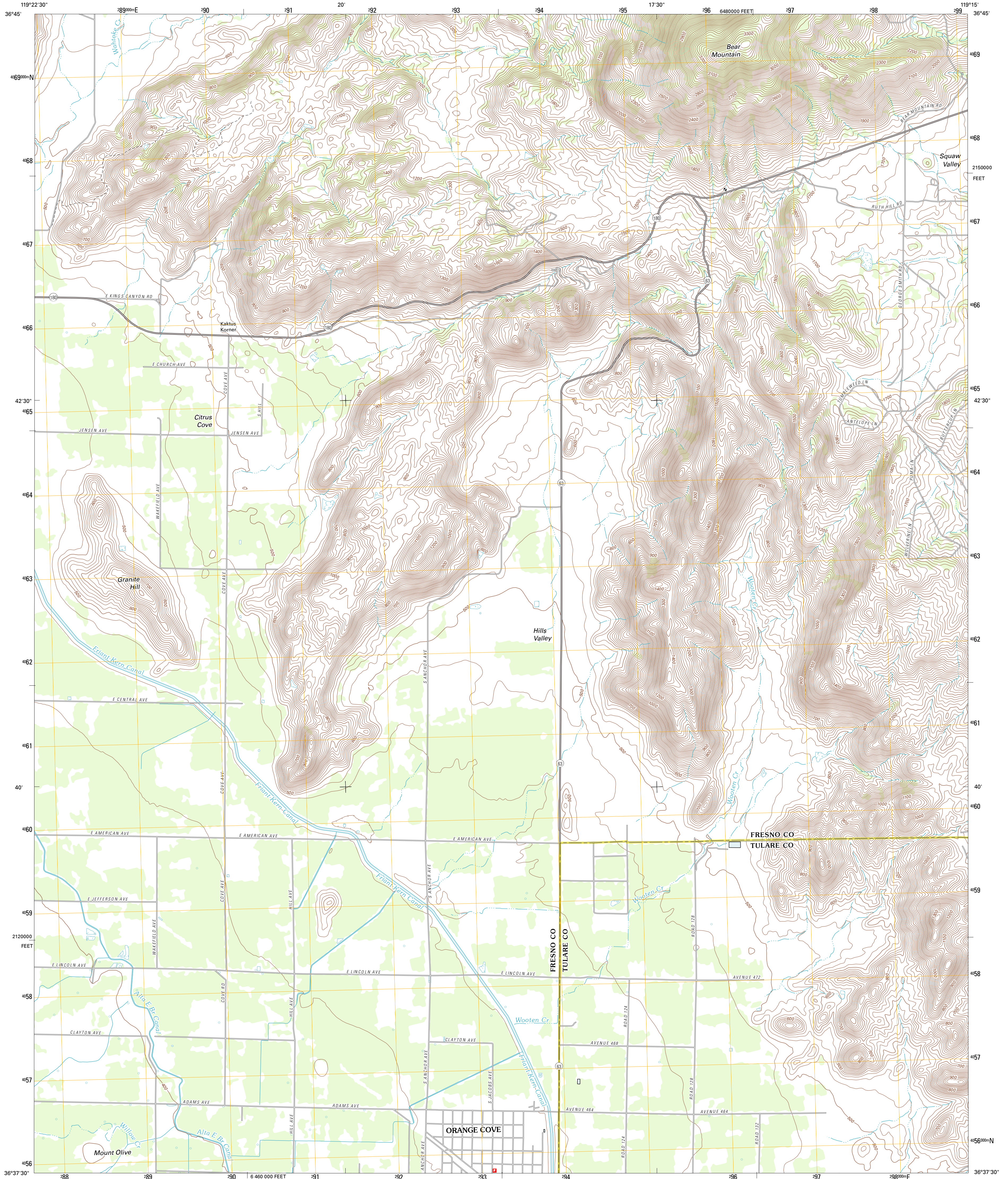




U.S. DEPARTMENT OF THE INTERIOR
U. S. GEOLOGICAL SURVEY

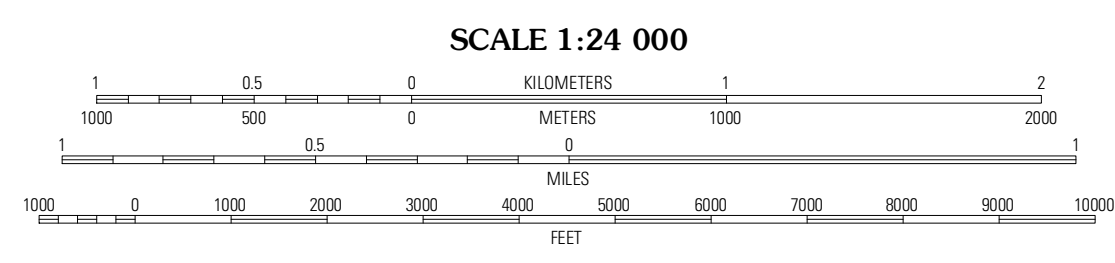
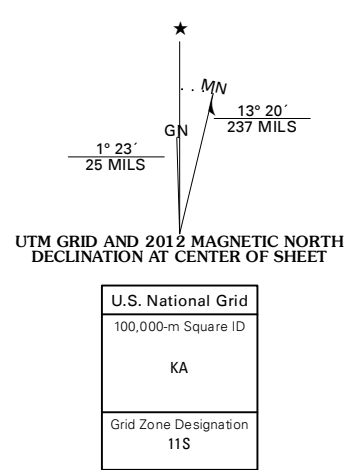


ORANGE COVE NORTH QUADRANGLE
CALIFORNIA
7.5-MINUTE SERIES



Produced by the United States Geological Survey
North American Datum of 1983 (NAD83)
World Geodetic System of 1984 (WGS84) Projection and
1 000 meter grid; Universal Transverse Mercator, Zone 11S
10 000-foot ticks; California Coordinate System of 1983
(zone 4)

Imagery.....NAP, July 2010
Roads.....©2006-2011 TomTom
Names.....GNIS, 2011
Hydrography.....National Hydrography Dataset, 2010
Contours.....National Elevation Dataset, 2001
Boundaries.....Census, IBWC, IBC, USGS, 1972 - 2010



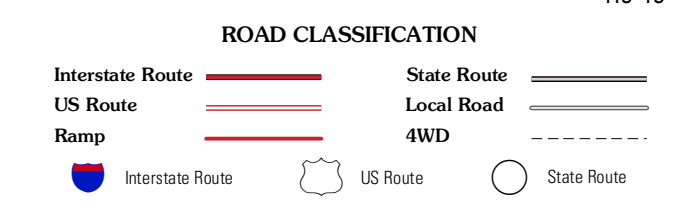
CONTOUR INTERVAL 20 FEET
NORTH AMERICAN VERTICAL DATUM OF 1988

This map was produced to conform with the
National Geospatial Program US Topo Product Standard, 2011.
A metadata file associated with this product is draft version 0.6.1



QUADRANGLE LOCATION

Piedra	Pine Flat Dam	Lockett Mountain
Waltone	Orange Cove North	Tucker Mountain
Reedley	Orange Cove South	Stokes Mountain



ORANGE COVE NORTH, CA
2012

ADJOINING 7.5' QUADRANGLES