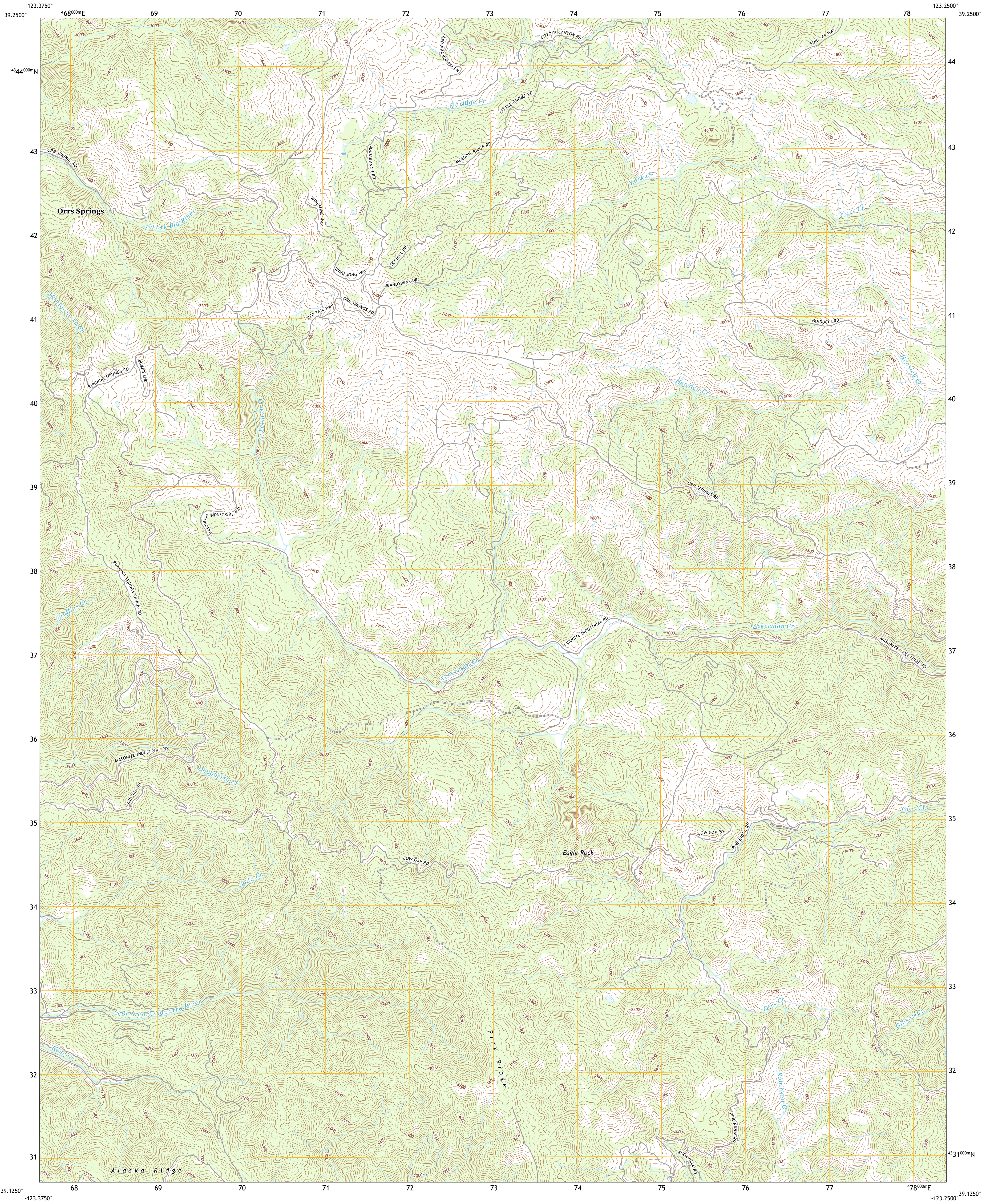




U.S. DEPARTMENT OF THE INTERIOR
U.S. GEOLOGICAL SURVEY



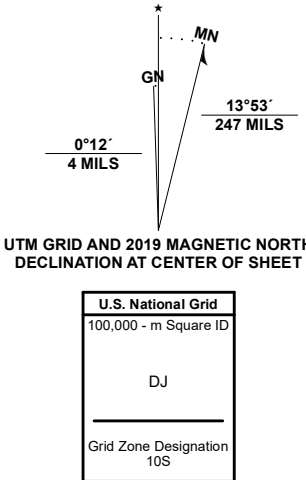
ORRS SPRINGS QUADRANGLE
CALIFORNIA - MENDOCINO COUNTY
7.5-MINUTE SERIES



Produced by the United States Geological Survey

North American Datum of 1983 (NAD83)
World Geodetic System of 1984 (WGS84). Projection and
1 000-meter grid/Universal Transverse Mercator, Zone 10S
This map is not a legal document. Boundaries may be
generalized for this map scale. Private lands within government
reservations may not be shown. Obtain permission before
entering private lands.

Imagery.....NAIP, June 2020 - June 2020
Roads.....U.S. Census Bureau, 2016
Names.....GNIS, 1981 - 2021
Hydrography.....National Hydrography Dataset, 2003 - 2019
Contours.....National Elevation Dataset, 2018
Boundaries.....Multiple sources: see metadata file, 2019 - 2021
Public Land Survey System.....BLM, 2020
Wetlands.....FWS National Wetlands Inventory, 1976



CONTOUR INTERVAL 40 FEET
NORTH AMERICAN VERTICAL DATUM OF 1988
This map was produced to conform with the
National Geospatial Program US Topo Product Standard.



1	2	3
4	5	6
7	8	9

- 1 Greenough Ridge
- 2 Laughlin Range
- 3 Redwood Valley
- 4 Bailey Ridge
- 5 Ukiah
- 6 Philo
- 7 Boonville
- 8 Elledge Peak

ROAD CLASSIFICATION	
Expressway	Local Connector
Secondary Hwy	Local Road
Ramp	4WD
Interstate Route	US Route
	State Route

ORRS SPRINGS, CA
2021

