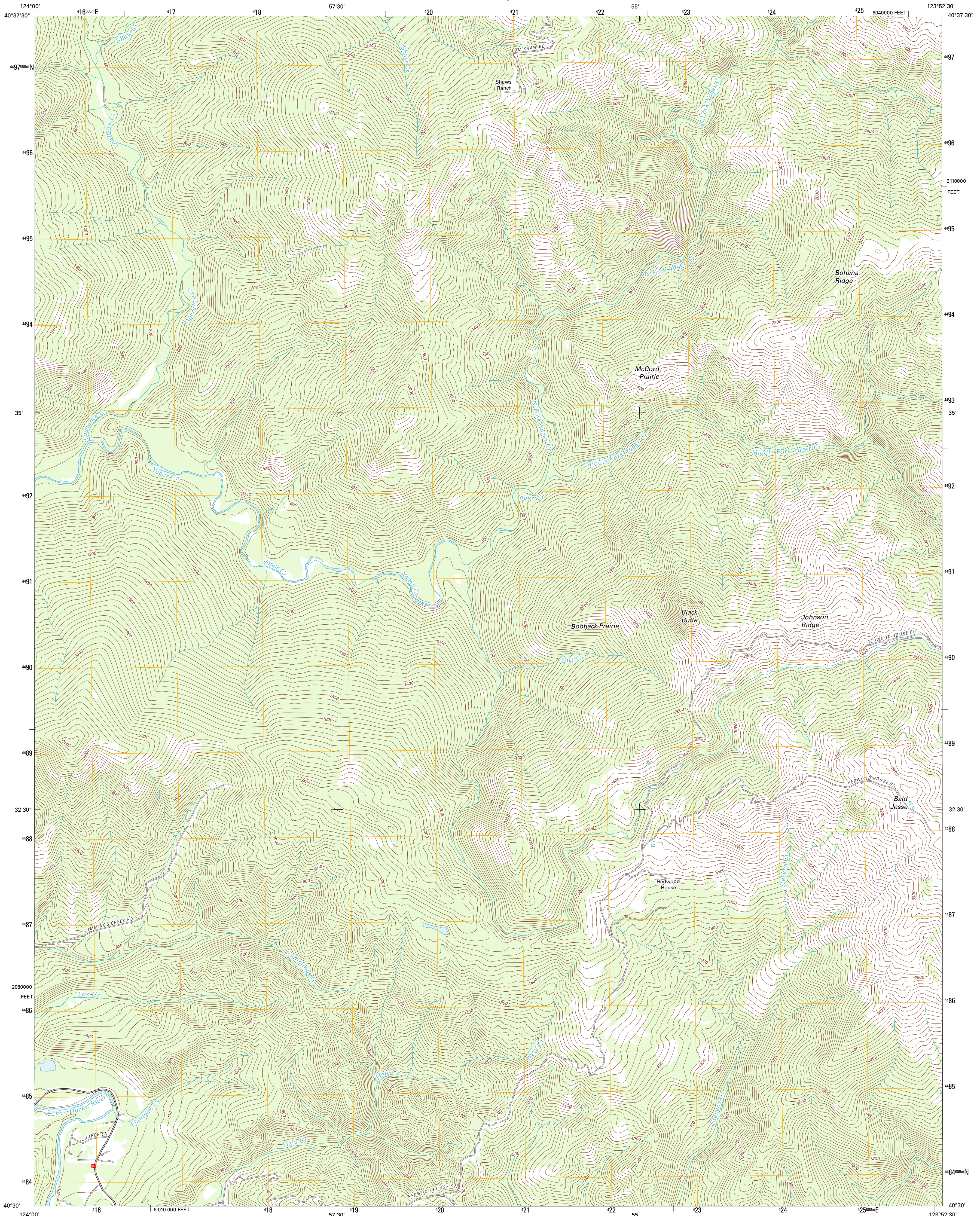




U.S. DEPARTMENT OF THE INTERIOR  
U. S. GEOLOGICAL SURVEY

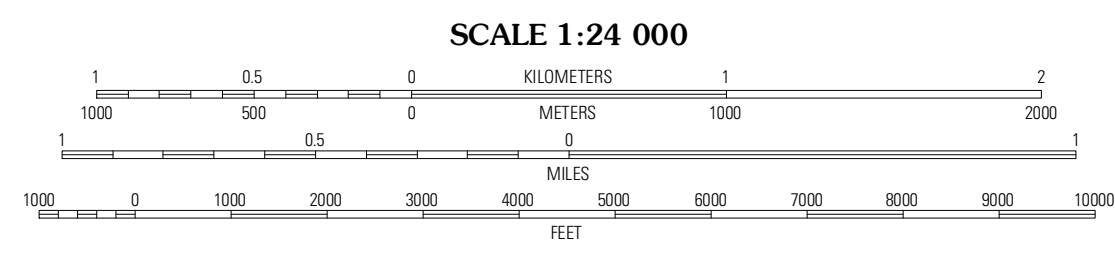
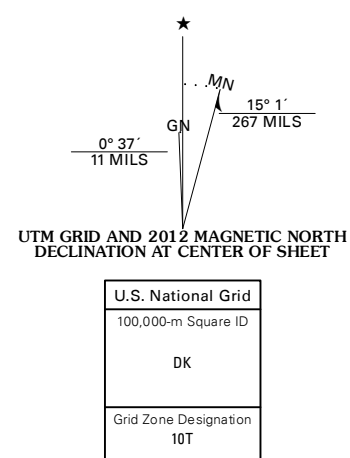


OWL CREEK QUADRANGLE  
CALIFORNIA-HUMBOLDT CO.  
7.5-MINUTE SERIES



Produced by the United States Geological Survey  
North American Datum of 1983 (NAD83)  
World Geodetic System of 1984 (WGS84). Projection and  
1 000-meter grid. Universal Transverse Mercator, Zone 10T  
10 000-foot ticks. California Coordinate System of 1983  
(zone 1)

Imagery:.....NAIP, June 2010 - July 2010  
Roads:.....©2006-2011, TomTom  
Names:.....GNS, 2011  
Hydrography:.....National Hydrography Dataset, 2010  
Contours:.....National Elevation Dataset, 1999  
Boundaries:.....Census, IBWC, IBC, USGS, 1972 - 2010



CONTOUR INTERVAL 40 FEET  
NORTH AMERICAN VERTICAL DATUM OF 1988

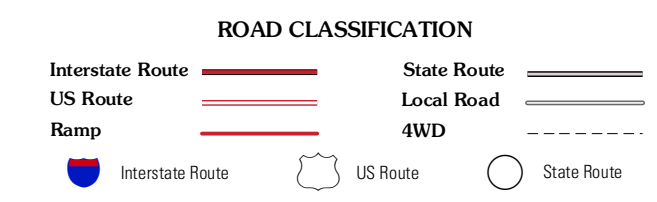
This map was produced to conform with the  
National Geospatial Program US Topo Product Standard, 2011.  
A metadata file associated with this product is draft version 0.6.1



QUADRANGLE LOCATION

McWhanney Creek	Isaia Buttes	Mad River Buttes
Hobbesville	Owl Creek	Yager Junction
Scotia	Redcrest	Bridgeville

ADJOINING 7.5' QUADRANGLES



OWL CREEK, CA  
2012