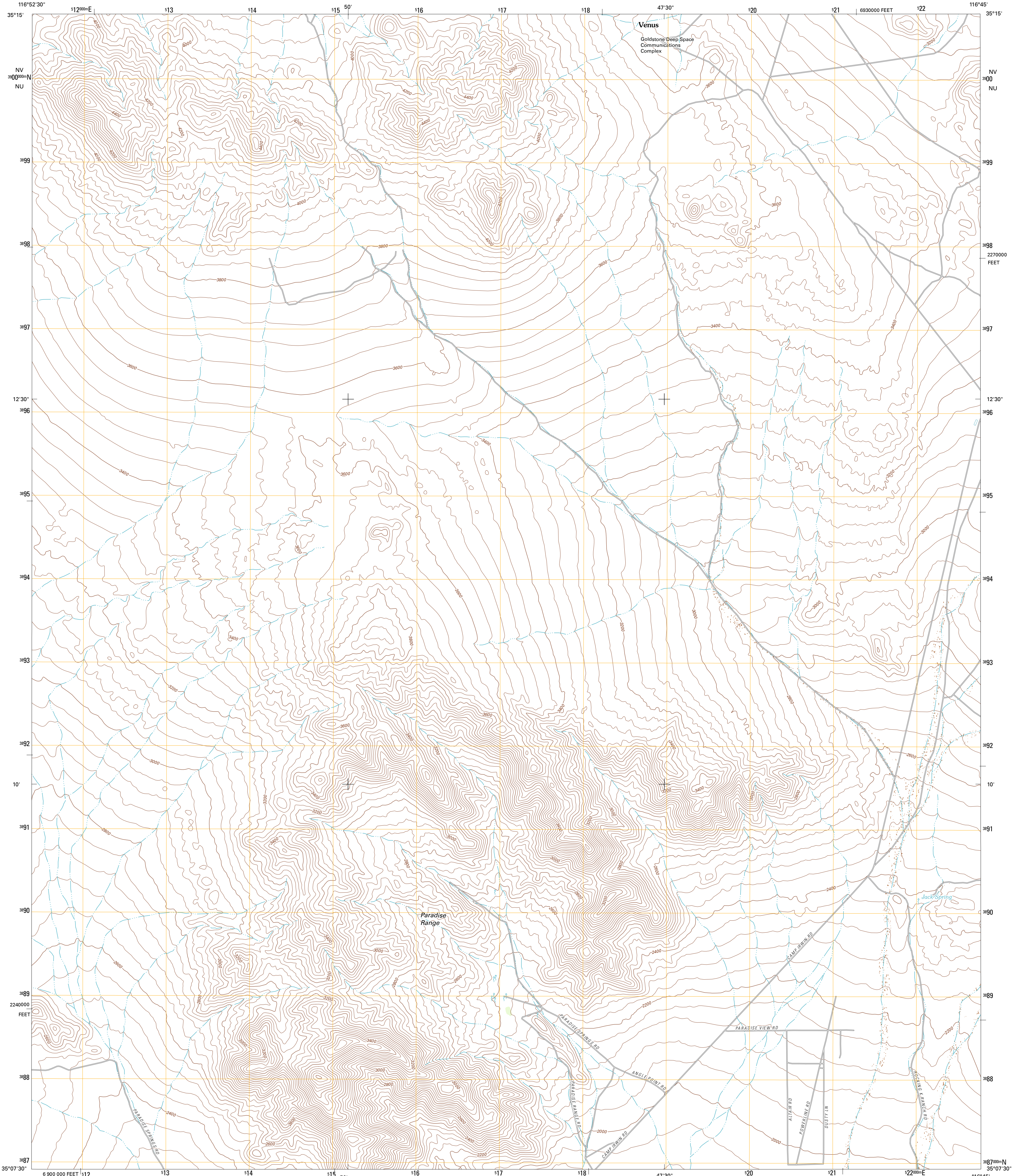




U.S. DEPARTMENT OF THE INTERIOR
U. S. GEOLOGICAL SURVEY

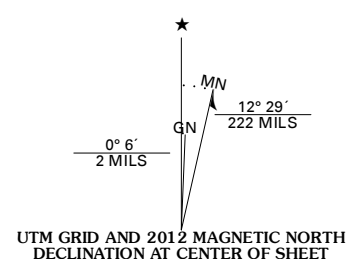


PARADISE RANGE QUADRANGLE
CALIFORNIA-SAN BERNARDINO CO.
7.5-MINUTE SERIES

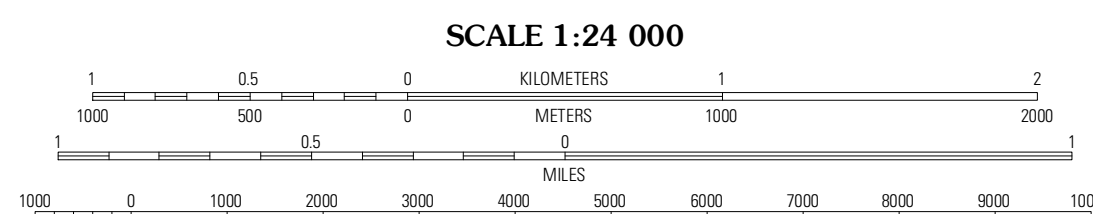


Produced by the United States Geological Survey
North American Datum of 1983 (NAD83)
World Geodetic System of 1984 (WGS84). Projection and
1 000-meter grid: Universal Transverse Mercator, Zone 11S
10 000-foot ticks: California Coordinate System of 1983
(zone 5)

Imagery:.....NAIP, May 2010 - June 2010
Roads:.....©2006-2011 TomTom
Names:.....GNIS, 2011
Hydrography:.....National Hydrography Dataset, 2010
Contours:.....National Elevation Dataset, 2005
Boundaries:.....Census, IBWC, IBC, USGS, 1972 - 2010



U.S. National Grid
100,000-m Square ID
NV 730
NU
Grid Zone Designation
11S



CONTOUR INTERVAL 40 FEET
NORTH AMERICAN VERTICAL DATUM OF 1988

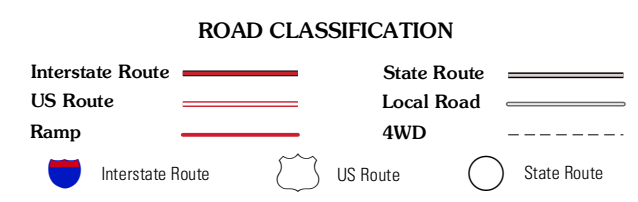
This map was produced to conform with the
National Geospatial Program US Topo Product Standard, 2011.
A metadata file associated with this product is draft version 0.6.1



QUADRANGLE LOCATION

Goldstone	East of Goldstone	Fort Irwin
Williams Well	Paradise Range	Langford Well
Lane Mountain	Coyote Lake	Alford Mountain West

ADJOINING 7.5 QUADRANGLES



PARADISE RANGE, CA
2012