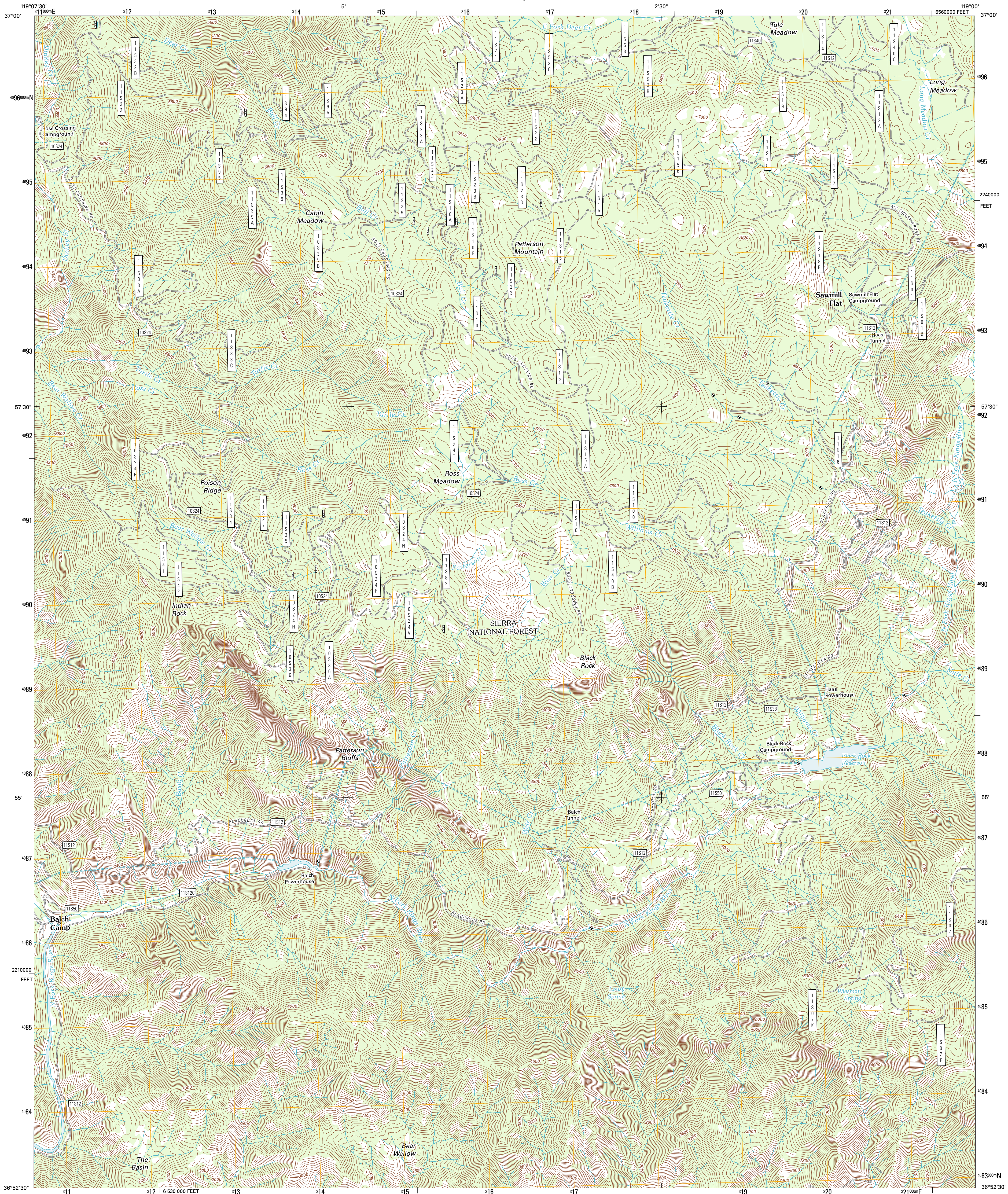




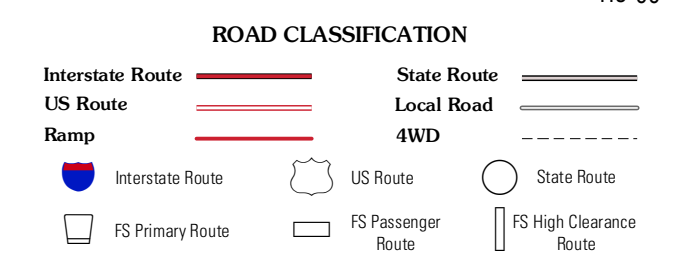
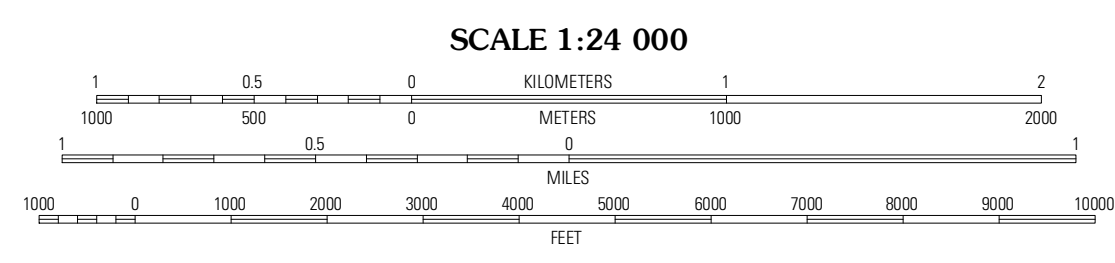
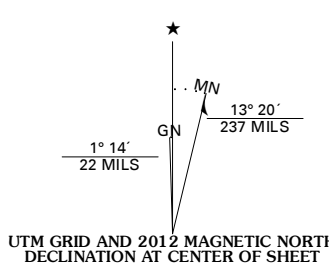
U.S. DEPARTMENT OF THE INTERIOR
U. S. GEOLOGICAL SURVEY



PATTERSON MOUNTAIN QUADRANGLE
CALIFORNIA-FRESNO CO.
7.5-MINUTE SERIES



Produced by the United States Geological Survey
North American Datum of 1983 (NAD83)
World Geodetic System of 1984 (WGS84). Projection and
1:1000-meter grid. Universal Transverse Mercator, Zone 11S
10 000-foot ticks: California Coordinate System of 1983
(zone 4)



QUADRANGLE LOCATION

Dinkey Creek	Nelson Mountain	Courtright Reservoir
Sacate Ridge	Patterson Mountain	Rough Spur
Luckett Mountain	Verplank Ridge	Home

Imagery: N.A.P., August 2010
Roads: ©2006-2011 TomTom
Roads within US Forest Service Lands with limited Forest Service updates, 2009
Names: G.N.S., 2011
Hydrography: National Hydrography Dataset, 2010
Contours: National Elevation Dataset, 1999
Boundaries: Census, IBWC, IBC, USGS, 1972 - 2010

CONTOUR INTERVAL 40 FEET
NORTH AMERICAN VERTICAL DATUM OF 1988

This map was produced to conform with the
National Geospatial Program US Topo Product Standard, 2011.
A metadata file associated with this product is draft version 0.6.1

Check with local Forest Service unit
for current travel conditions and restrictions.

PATTERSON MOUNTAIN, CA
2012

ADJOINING 7.5 QUADRANGLES