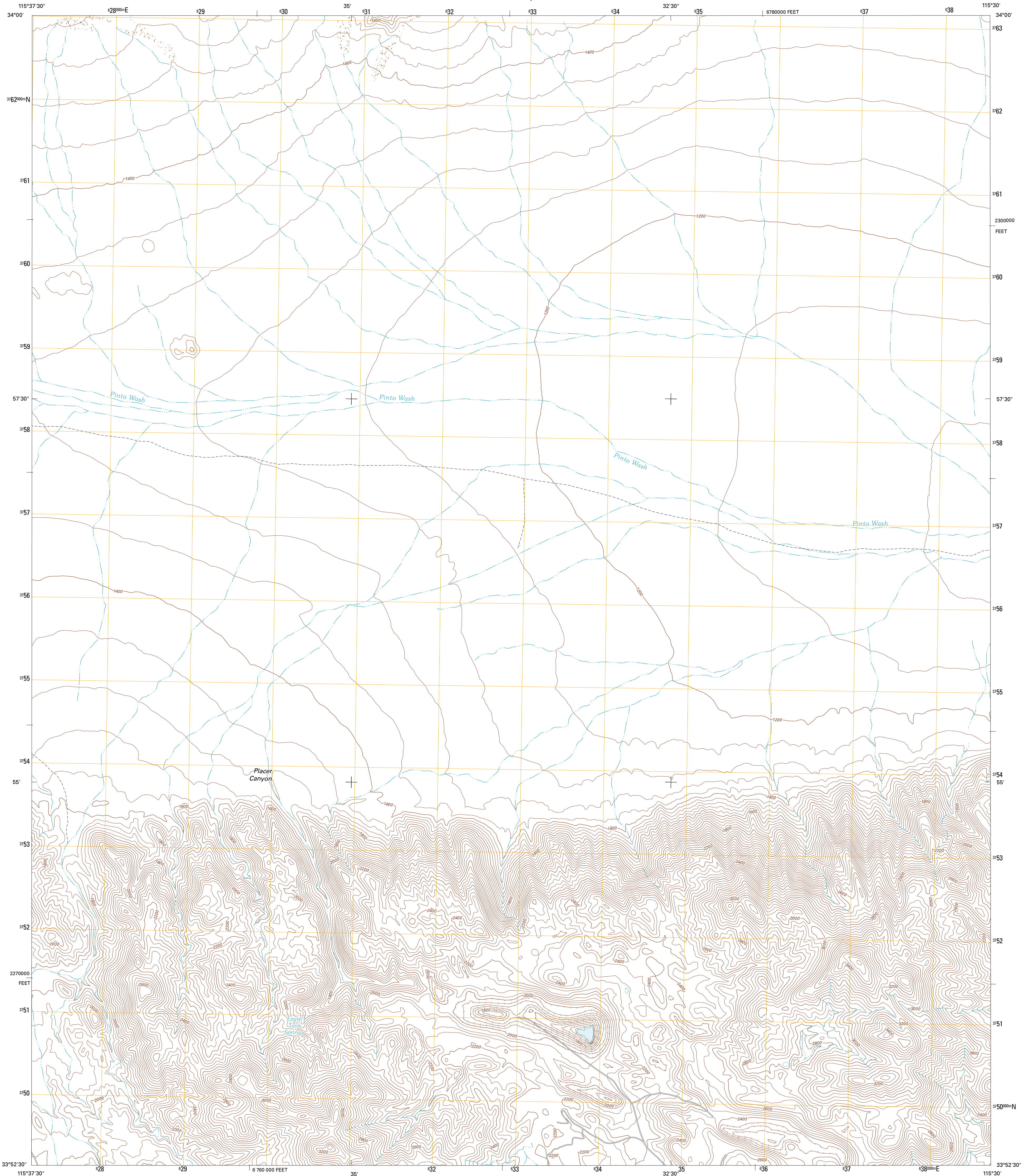




U.S. DEPARTMENT OF THE INTERIOR
U. S. GEOLOGICAL SURVEY

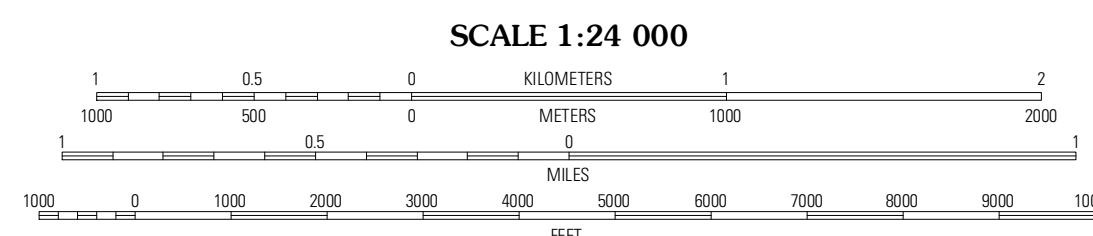
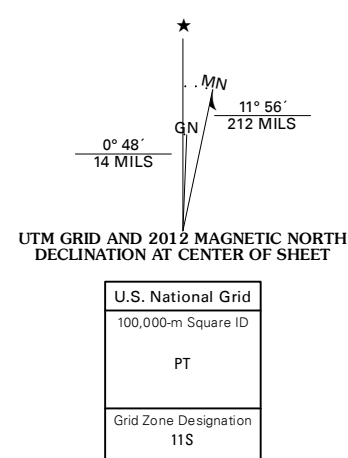


PLACER CANYON QUADRANGLE
CALIFORNIA-RIVERSIDE CO.
7.5-MINUTE SERIES



Produced by the United States Geological Survey
North American Datum of 1983 (NAD83)
World Geodetic System of 1984 (WGS84). Projection and
1 000-meter grid: Universal Transverse Mercator, Zone 11S
1 000-foot ticks: California Coordinate System of 1983
(zone 6)

Imagery: N/AIP, April 2010
Roads: ©2006-2011 TomTom
Names: GNS, 2011
Hydrography: National Hydrography Dataset, 2010
Contours: National Elevation Dataset, 2006
Boundaries: Census, BWC, IBC, USGS, 1972 - 2010

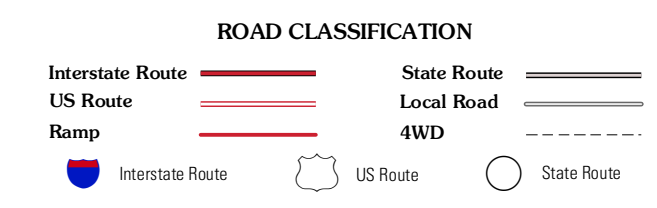


CONTOUR INTERVAL 40 FEET
NORTH AMERICAN VERTICAL DATUM OF 1988
This map was produced to conform with the
National Geospatial Program US Topo Product Standard, 2011.
A metadata file associated with this product is draft version 0.6.1



QUADRANGLE LOCATION

New Dale	Clarks Pass	Cadiz Valley SW
Sun Bernardino Wash	Placer Canyon	Pinto Wells
Concho Well	Buzzard Spring	Victory Pass



PLACER CANYON, CA
2012

ADJOINING 7.5' QUADRANGLES