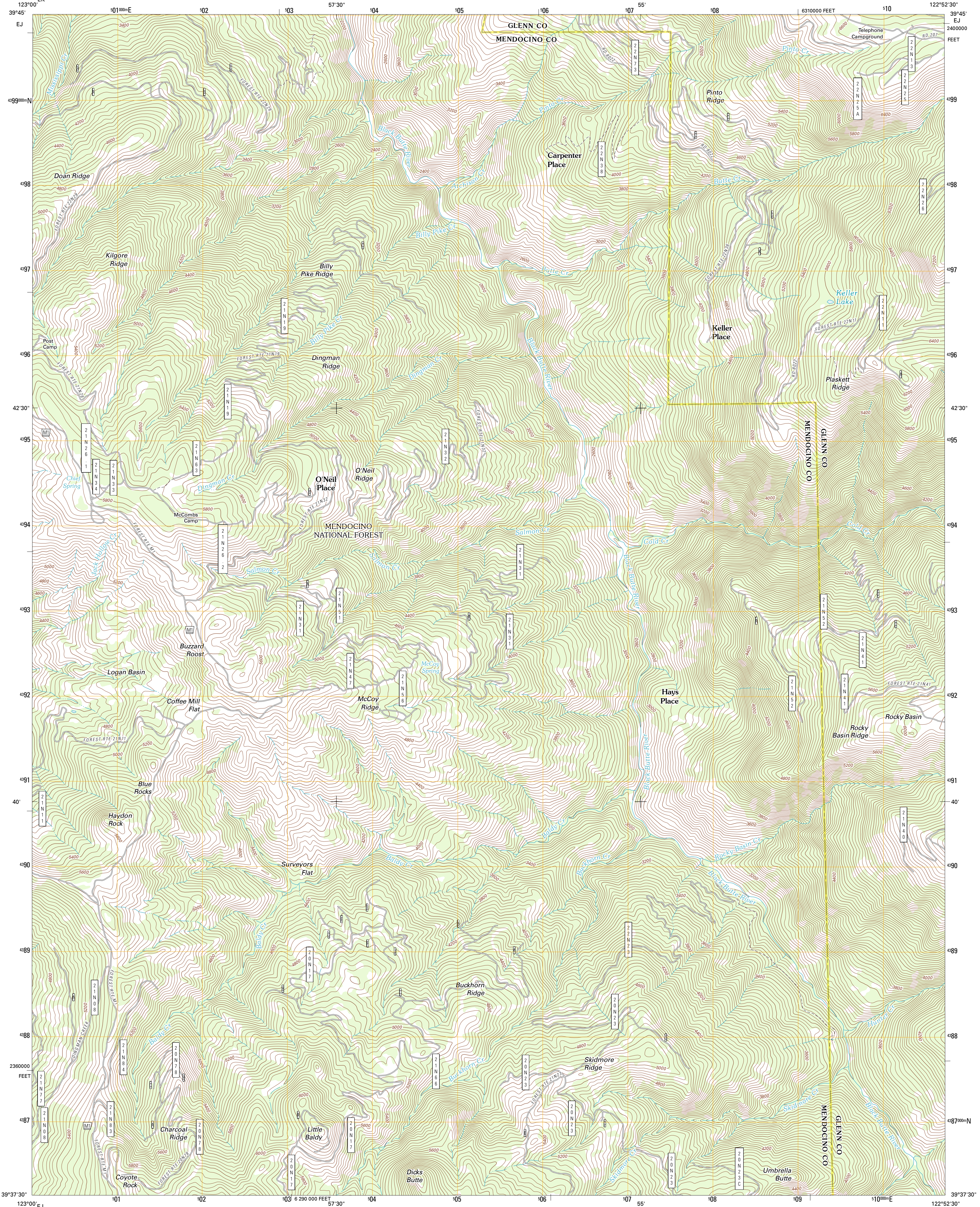




U.S. DEPARTMENT OF THE INTERIOR
U. S. GEOLOGICAL SURVEY

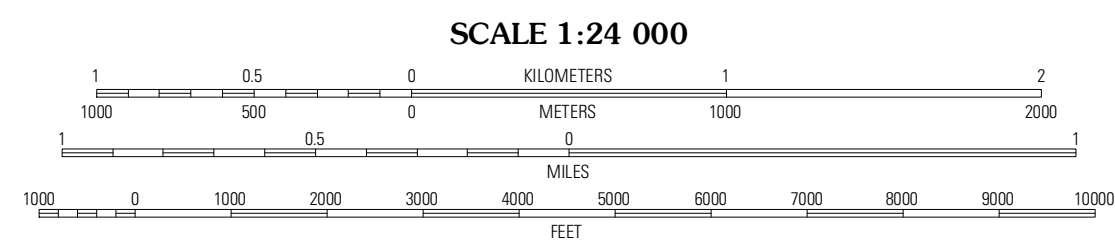
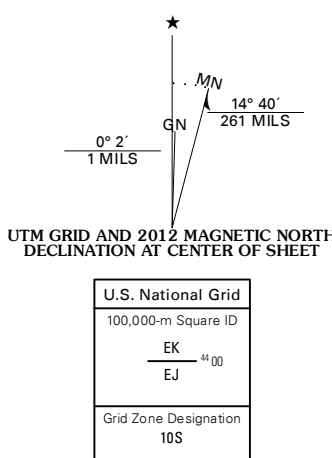


PLASKETT RIDGE QUADRANGLE
CALIFORNIA
7.5-MINUTE SERIES



Produced by the United States Geological Survey
North American Datum of 1983 (NAD83)
World Geodetic System of 1984 (WGS84). Projection and
1 000-meter grid: Universal Transverse Mercator, Zone 10S
10 000-foot ticks: California Coordinate System of 1983
(zone 2)

Imagery: NAIP, July 2010 - August 2010
Roads: ©2006-2011 TomTom
Roads within US Forest Service Lands: FS Topo Data
with limited Forest Service updates, 2009
Names: GNIS, 2011
Hydrography: National Hydrography Dataset, 2010
Contours: National Elevation Dataset, 2001
Boundaries: Census, IBWC, IBC, USGS, 1972 - 2010



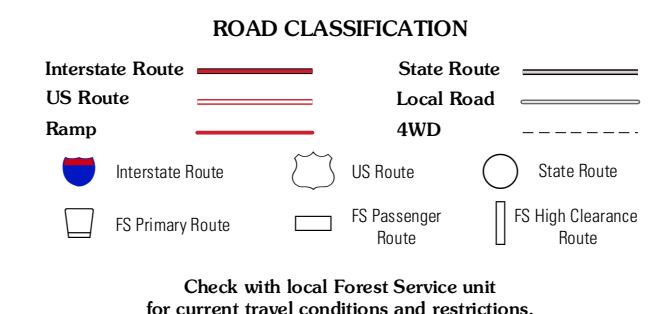
CONTOUR INTERVAL 40 FEET
NORTH AMERICAN VERTICAL DATUM OF 1988
This map was produced to conform with the
National Geospatial Program US Topo Product Standard, 2011.
A metadata file associated with this product is draft version 0.6.1



QUADRANGLE LOCATION

Newhouse Ridge	Mendocino Pass	Log Spring
Thatcher Ridge	Plaskett Ridge	Plaskett Meadows
Sunshine Mountain	Hull Mountain	Kneecap Ridge

ADJOINING 7.5 QUADRANGLES



PLASKETT RIDGE, CA
2012