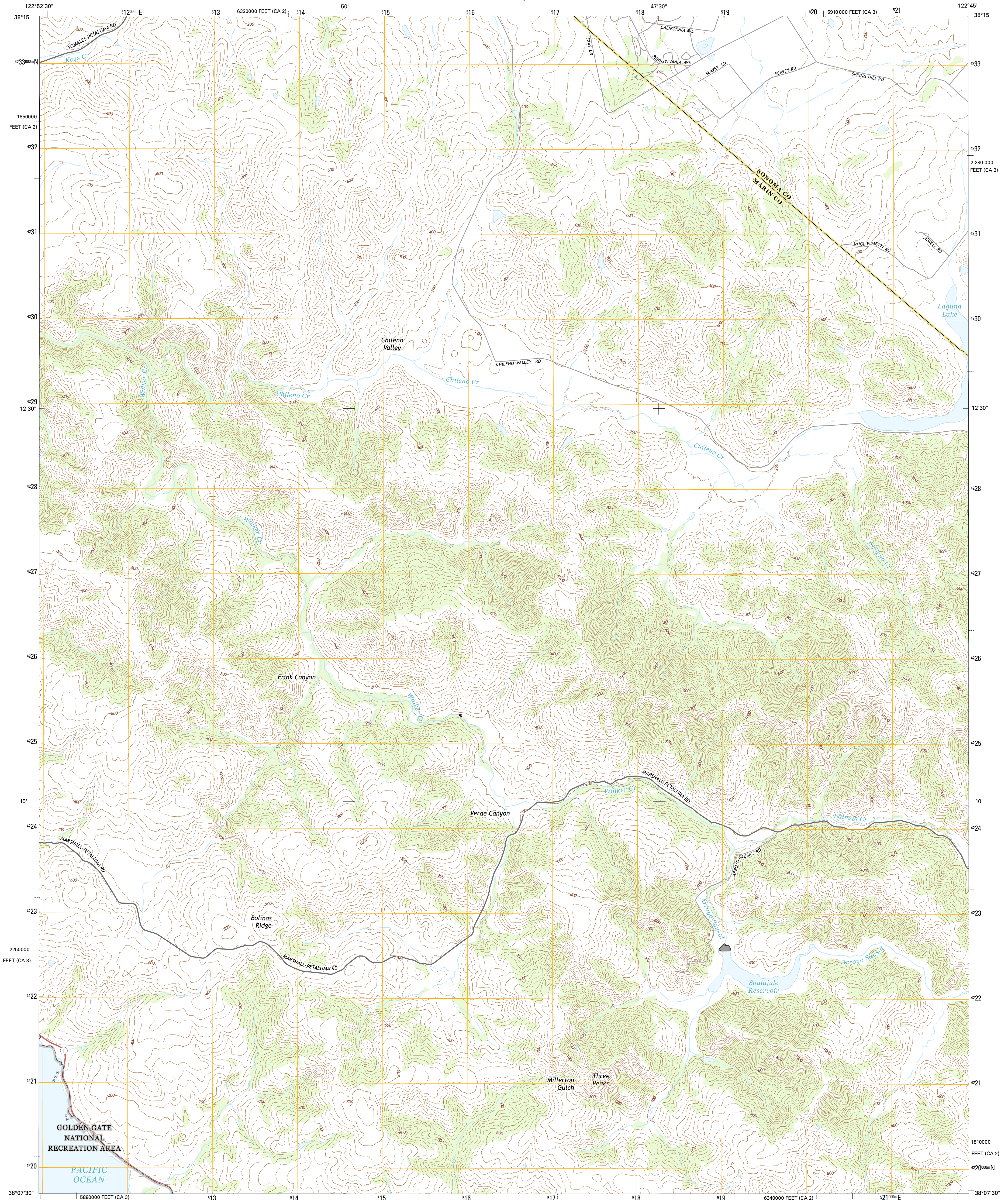




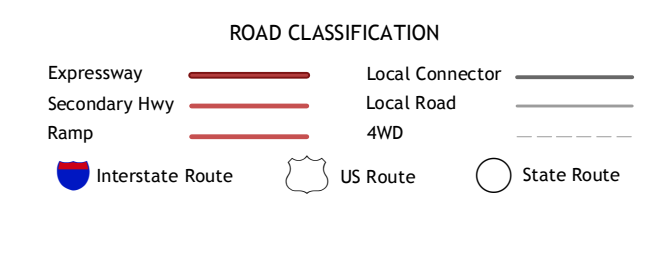
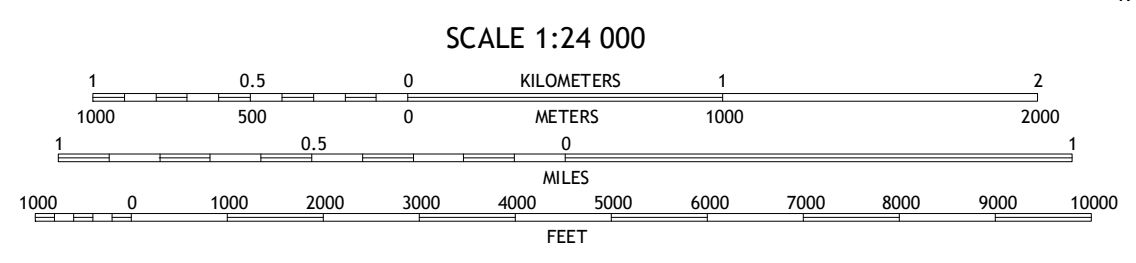
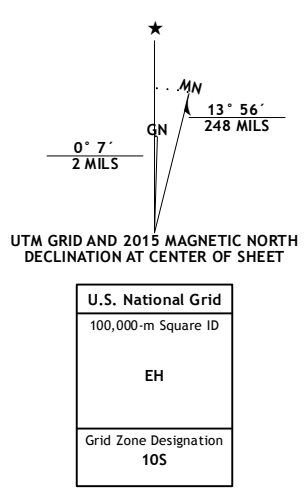
U.S. DEPARTMENT OF THE INTERIOR
U.S. GEOLOGICAL SURVEY



POINT REYES NE QUADRANGLE
CALIFORNIA
7.5-MINUTE SERIES



Produced by the United States Geological Survey
 North American Datum of 1983 (NAD83)
 World Geodetic System of 1984 (WGS84) Projection and
 10 000-foot ticks: California Coordinate System of 1983 (zones 3
 and 2)
 This map is not a legal document. Boundaries may be
 generalized for this map scale. Private lands within government
 reservations may not be shown. Obtain permission before
 entering private lands.
 Imagery.....NAIP, May 2012
 Roads.....HERE, ©2013 - 2014
 Names.....GNIS, 2015
 Hydrography.....National Hydrography Dataset, 2012
 Contours.....National Elevation Dataset, 2012
 Boundaries.....Multiple sources; see metadata file 1972 - 2015
 Public Land Survey System.....BLM, 2011



1	2	3
4	5	6
7	8	

ADJOINING QUADRANGLES

1 Valley Ford
 2 Two Rock
 3 Cotati
 4 Tomales
 5 Petaluma
 6 Drakes Bay
 7 Inverness
 8 San Geronimo

POINT REYES NE, CA
 2015

