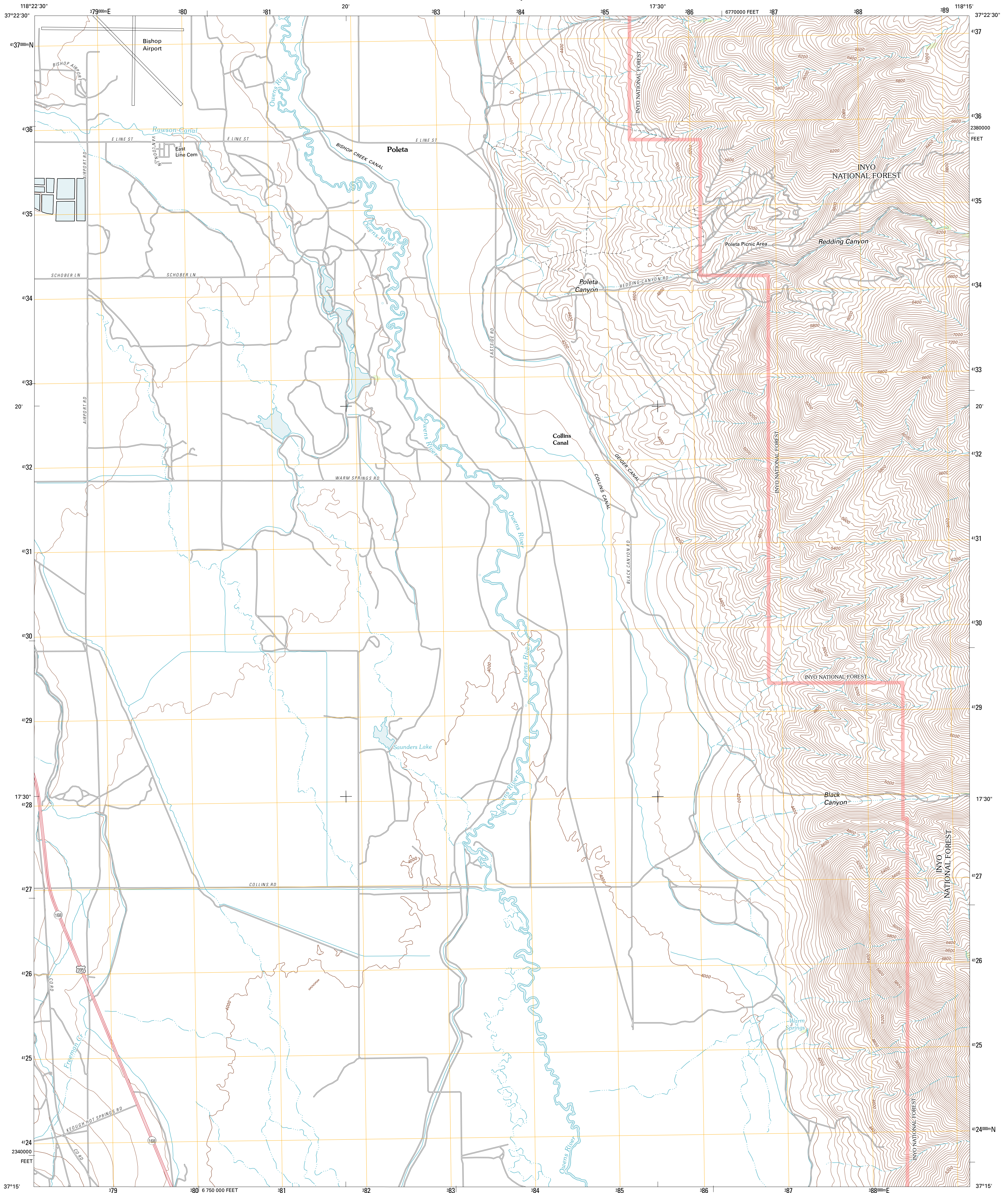




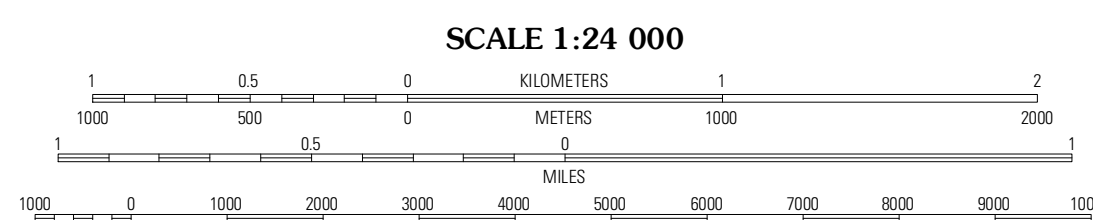
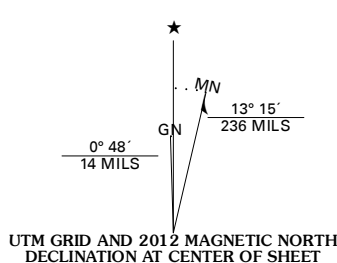
U.S. DEPARTMENT OF THE INTERIOR  
U. S. GEOLOGICAL SURVEY



POLETA CANYON QUADRANGLE  
CALIFORNIA-INYO CO.  
7.5-MINUTE SERIES



Produced by the United States Geological Survey  
North American Datum of 1983 (NAD83)  
World Geodetic System of 1984 (WGS84). Projection and  
1 000-meter grid: Universal Transverse Mercator, Zone 11S  
10 000-foot ticks: California Coordinate System of 1983  
(zone 4)



CONTOUR INTERVAL 40 FEET  
NORTH AMERICAN VERTICAL DATUM OF 1988

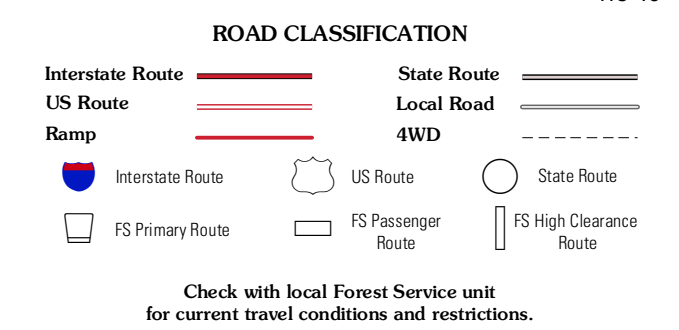
This map was produced to conform with the  
National Geospatial Program US Topo Product Standard, 2011.  
A metadata file associated with this product is draft version 0.6.1



QUADRANGLE LOCATION

Fish Slough	Laws	Blanco Mountain
Bishop	Poleta Canyon	Westgard Pass
Coyote Flat	Big Pine	Uhlmeier Spring

ADJOINING 7.5 QUADRANGLES



POLETA CANYON, CA  
2012