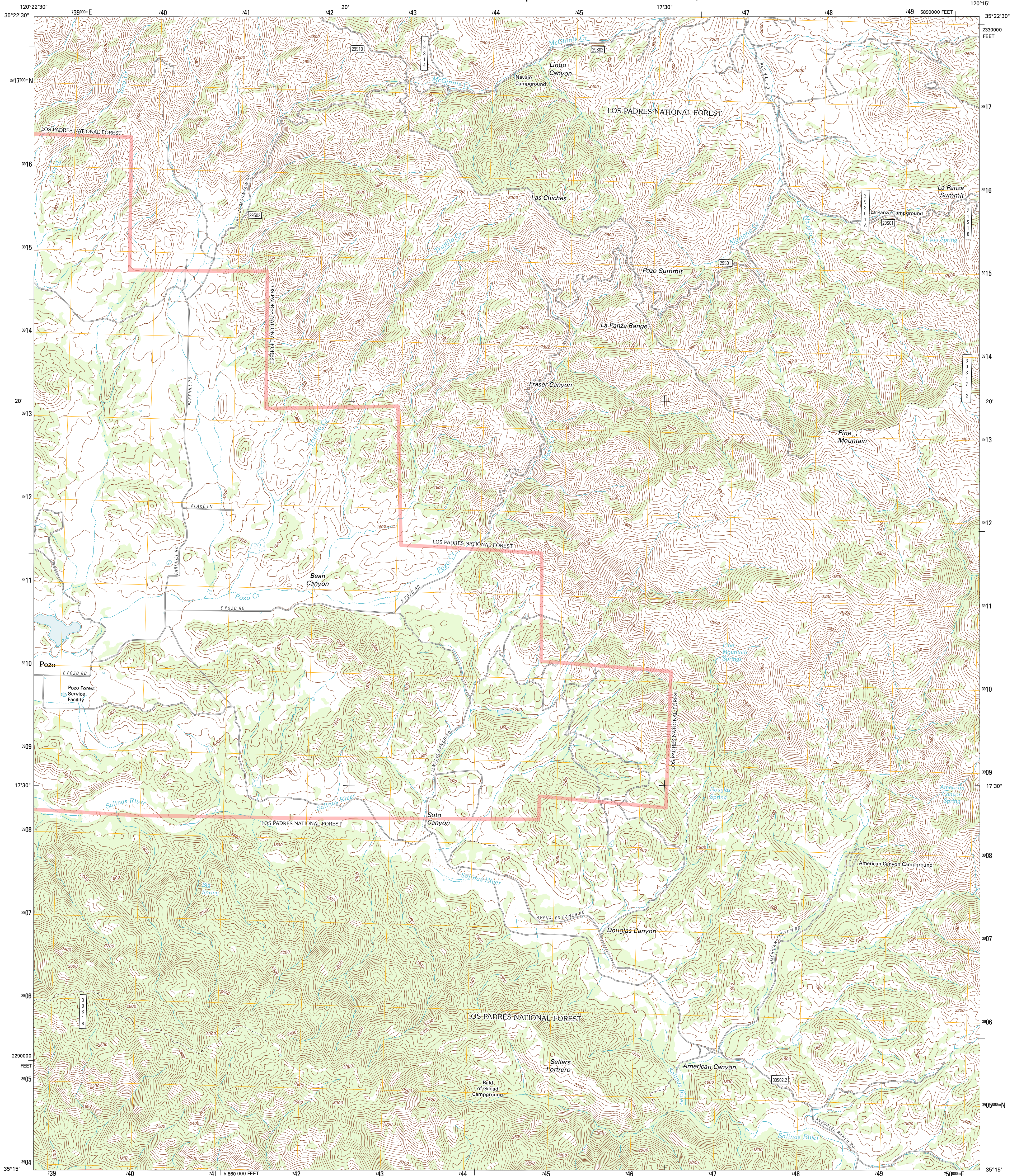




U.S. DEPARTMENT OF THE INTERIOR
U. S. GEOLOGICAL SURVEY

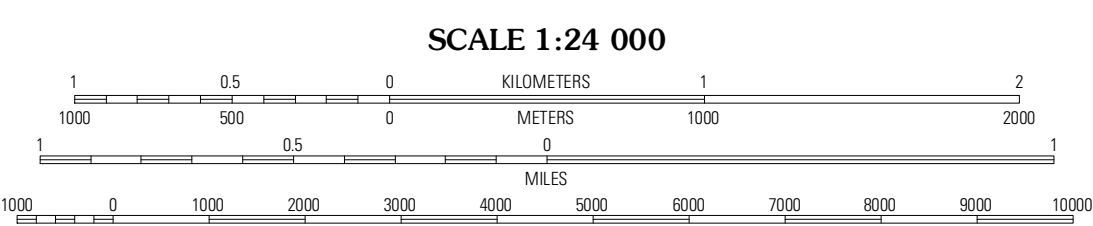
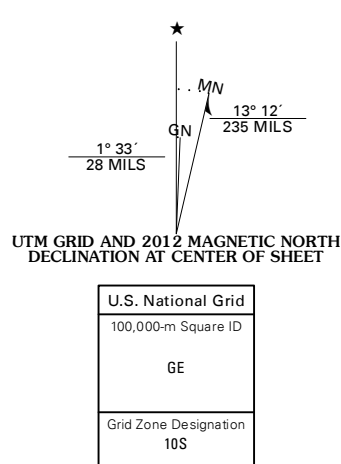


POZO SUMMIT QUADRANGLE
CALIFORNIA-SAN LUIS OBISPO CO.
7.5-MINUTE SERIES



Produced by the United States Geological Survey
North American Datum of 1983 (NAD83)
World Geodetic System of 1984 (WGS84) Projection and
1 000-meter grid; Universal Transverse Mercator, Zone 10S
10 000-foot ticks; California Coordinate System of 1983
(zone 5)

Imagery.....NAIP, June 2010
Roads.....©2006-2011 TomTom
Roads within US Forest Service Lands.....FS Topo Data
with limited Forest Service updates, 2009
Names.....GNIS, 2011
Hydrography.....National Hydrography Dataset, 2010
Contours.....National Elevation Dataset, 2005
Boundaries.....Census, IBWC, IBC, USGS, 1972 - 2010



CONTOUR INTERVAL 40 FEET
NORTH AMERICAN VERTICAL DATUM OF 1988

This map was produced to conform with the
National Geospatial Program US Topo Product Standard, 2011.
A metadata file associated with this product is draft version 0.6.1



QUADRANGLE LOCATION

Wilson Corner	Camatta Ranch	La Panza Ranch
Santa Margarita Lake	Pozo Summit	La Panza
Tar Spring Ridge	Caldwell Mesa	Los Machos Hills

ADJOINING 7.5 QUADRANGLES

ROAD CLASSIFICATION

	Interstate Route		State Route
	US Route		Local Road
	Ramp		4WD
	FS Primary Route		US Route
	FS Passenger Route		State Route
	FS High Clearance Route		FS High Clearance Route

Check with local Forest Service unit for current travel conditions and restrictions.

POZO SUMMIT, CA
2012