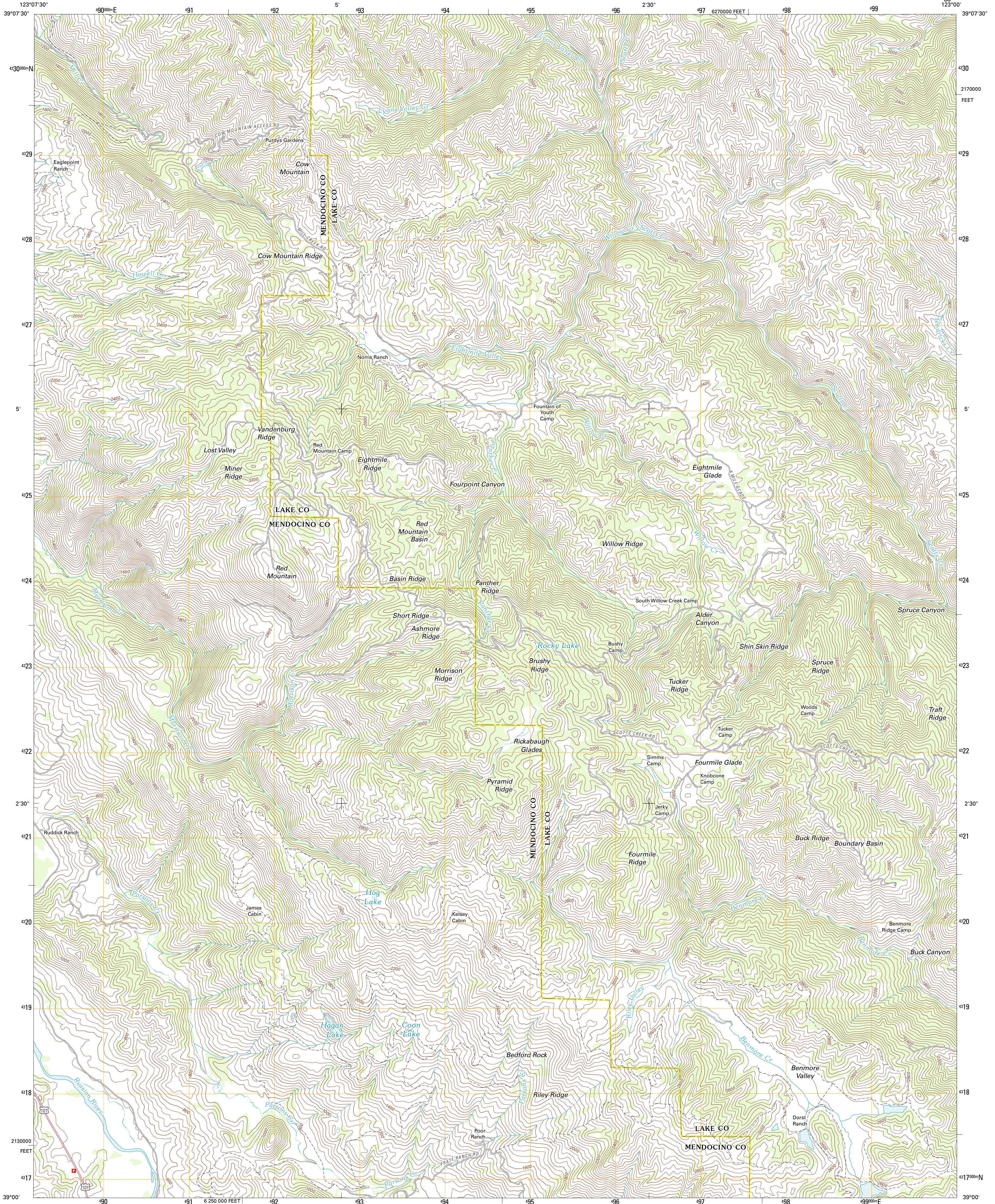




U.S. DEPARTMENT OF THE INTERIOR
U. S. GEOLOGICAL SURVEY

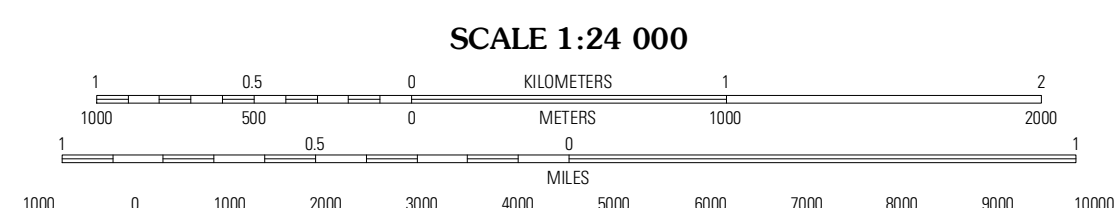
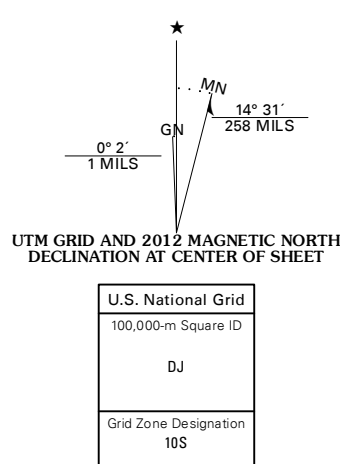


PURDYS GARDENS QUADRANGLE
CALIFORNIA
7.5-MINUTE SERIES



Produced by the United States Geological Survey
North American Datum of 1983 (NAD83)
World Geodetic System of 1984 (WGS84). Projection and
1 000-meter grid: Universal Transverse Mercator, Zone 10S
10 000-foot ticks: California Coordinate System of 1983
(zone 2)

Imagery:.....N.A.I.P., June 2010
Roads:.....©2006-2011 TomTom
Names:.....©2006-2011 TomTom
Hydrography:.....National Hydrography Dataset, 2010
Contours:.....National Elevation Dataset, 2000
Boundaries:.....Census, IBWC, IBC, USGS, 1972 - 2010

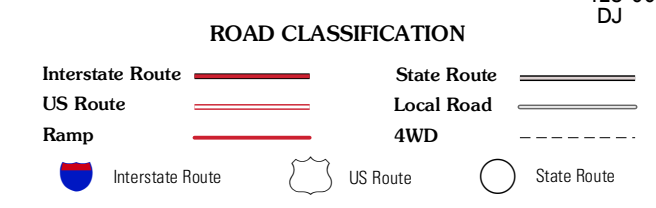


CONTOUR INTERVAL 40 FEET
NORTH AMERICAN VERTICAL DATUM OF 1988
This map was produced to conform with the
National Geospatial Program US Topo Product Standard, 2011.
A metadata file associated with this product is draft version 0.6.1



QUADRANGLE LOCATION

Ukiah	Cow Mountain	Upper Lake
Elledge Peak	Purdys Gardens	Lakeport
Yorkville	Hopland	Highland Springs



PURDYS GARDENS, CA
2012

ADJOINING 7.5 QUADRANGLES