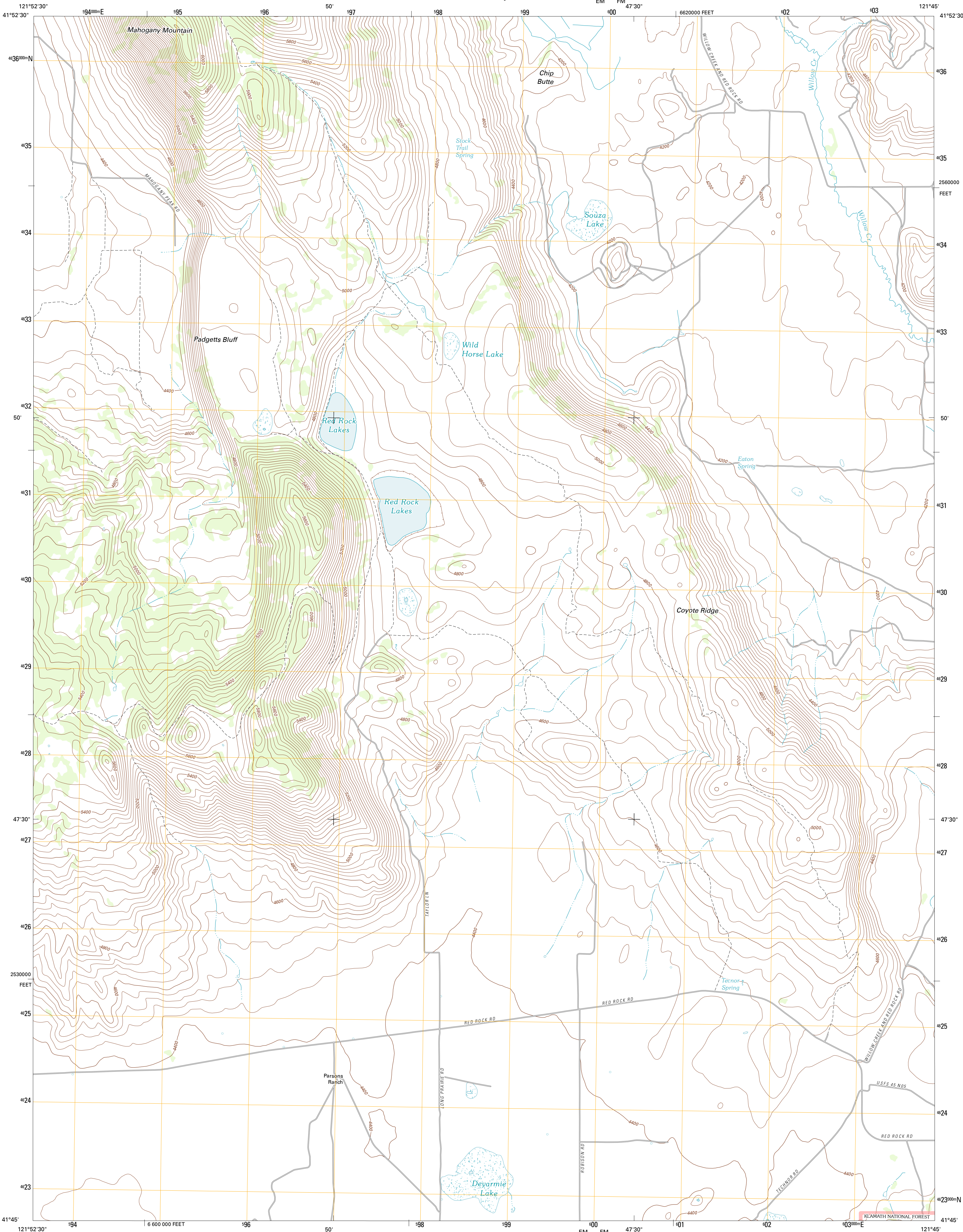




U.S. DEPARTMENT OF THE INTERIOR
U. S. GEOLOGICAL SURVEY

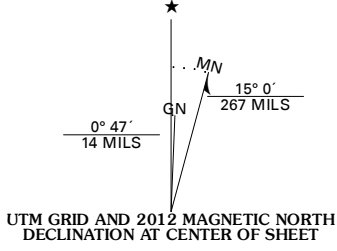


RED ROCK LAKES QUADRANGLE
CALIFORNIA-SISKIYOU CO.
7.5-MINUTE SERIES

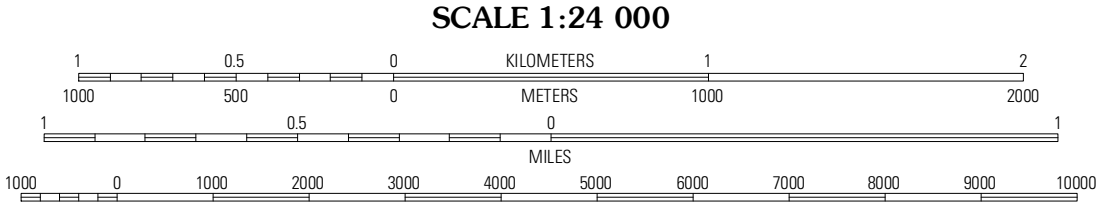


Produced by the United States Geological Survey
North American Datum of 1983 (NAD83)
World Geodetic System of 1984 (WGS84). Projection and
1 000-meter grid: Universal Transverse Mercator, Zone 10T
10 000-foot ticks: California Coordinate System of 1983
(zone 1)

Imagery.....NAIP, June 2010
Roads.....©2006-2011 TomTom
Roads within US Forest Service Lands.....FS Topo Data
with limited Forest Service updates, 2009
Names.....GNIS, 2011
Hydrography.....National Hydrography Dataset, 2010
Contours.....National Elevation Dataset, 2002
Boundaries.....Census, IBWC, IBC, USGS, 1972 - 2010



U.S. National Grid
100,000m Square ID
400
EM FM
Grid Zone Designation
10T



CONTOUR INTERVAL 40 FEET
NORTH AMERICAN VERTICAL DATUM OF 1988
This map was produced to conform with the
National Geospatial Program US Topo Product Standard, 2011.
A metadata file associated with this product is draft version 0.6.1



Dorris	Sheep Lake	Lower Klamath Lake
Sheep Mountain	Red Rock Lakes	Mount Dome
Bay	Sharp Mountain	Bonita Butte

ADJOINING 7.5' QUADRANGLES

ROAD CLASSIFICATION			
Interstate Route	State Route	Local Road	4WD
US Route	US Route	FS Passenger Route	FS High Clearance Route
Ramp	FS Primary Route		

Check with local Forest Service unit
for current travel conditions and restrictions.

RED ROCK LAKES, CA
2012