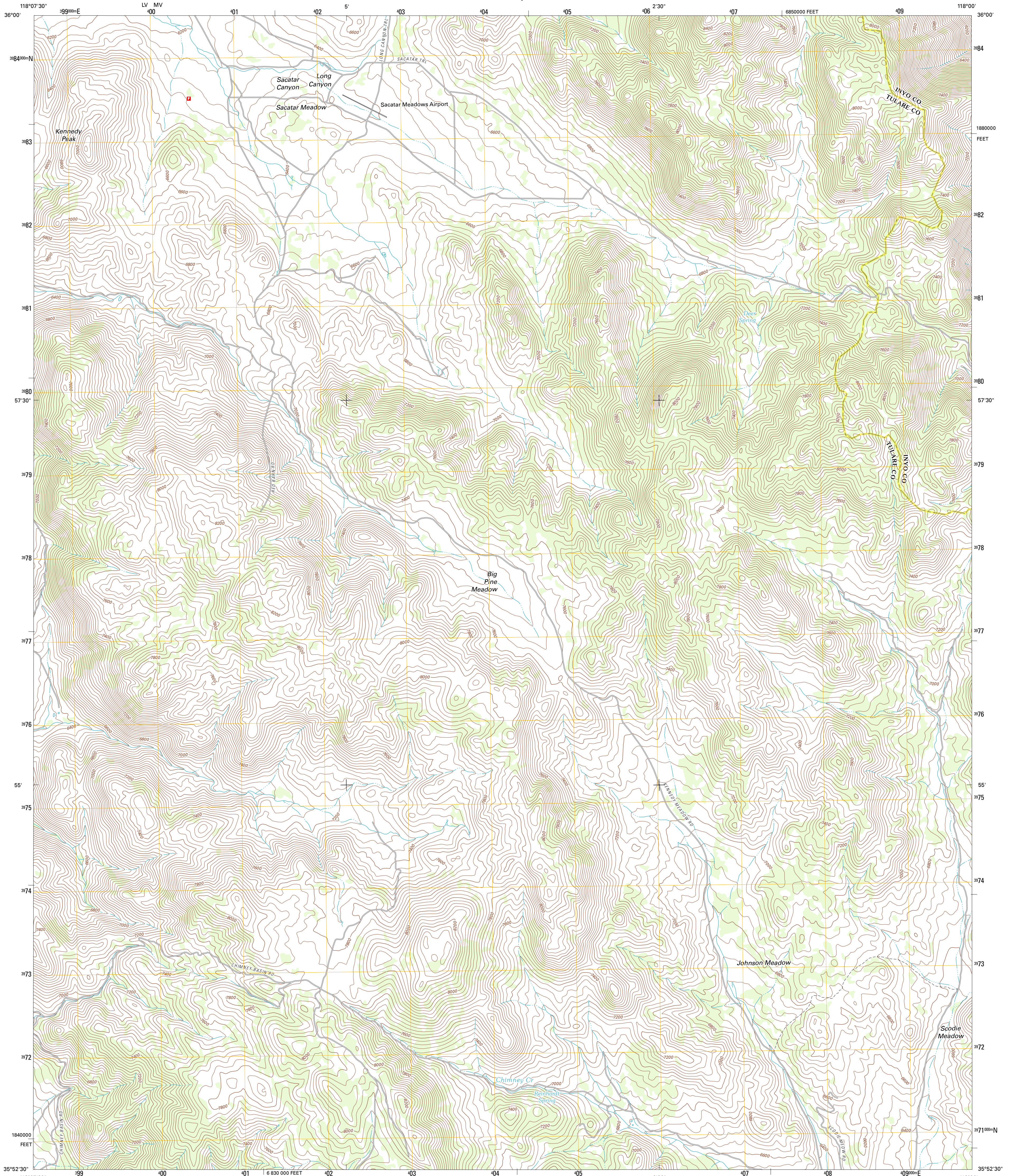




U.S. DEPARTMENT OF THE INTERIOR
U. S. GEOLOGICAL SURVEY



SACATAR CANYON QUADRANGLE
CALIFORNIA
7.5-MINUTE SERIES



Produced by the United States Geological Survey
North American Datum of 1983 (NAD83)
World Geodetic System of 1984 (WGS84). Projection and
1 000-meter grid: Universal Transverse Mercator, Zone 11S
10 000-foot ticks: California Coordinate System of 1983
(zone 4)

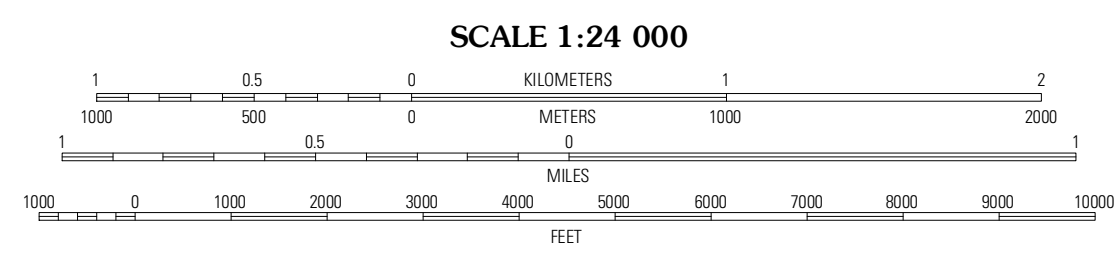
Imagery.....NAIP, July 2010 - September 2010
Roads.....©2006-2011 TomTom
Names.....GNIS, 2011
Hydrography.....National Hydrography Dataset, 2010
Contours.....National Elevation Dataset, 2001
Boundaries.....Census, BWC, IBC, USGS, 1972 - 2010

UTM GRID AND 2012 MAGNETIC NORTH DECLINATION AT CENTER OF SHEET

U.S. National Grid
100,000-m Square ID
10
LV MV
Grid Zone Designation
11S

Magnetic North
12° 55'
230 MILS

0° 27'
11 MILS



CONTOUR INTERVAL 40 FEET
NORTH AMERICAN VERTICAL DATUM OF 1988

This map was produced to conform with the
National Geospatial Program US Topo Product Standard, 2011.
A metadata file associated with this product is draft version 0.6.1



QUADRANGLE LOCATION

Crag Peak	Long Canyon	Coso Junction
Rockhouse Basin	Sacatar Canyon	Little Lake
White Dome	Lamont Peak	Ninemile Canyon

ROAD CLASSIFICATION

Interstate Route (thick red line)
US Route (red line)
Ramp (red line with blue triangle)
State Route (thin red line)
Local Road (grey line)
4WD (dashed grey line)

SACATAR CANYON, CA
2012

ADJOINING 7.5' QUADRANGLES