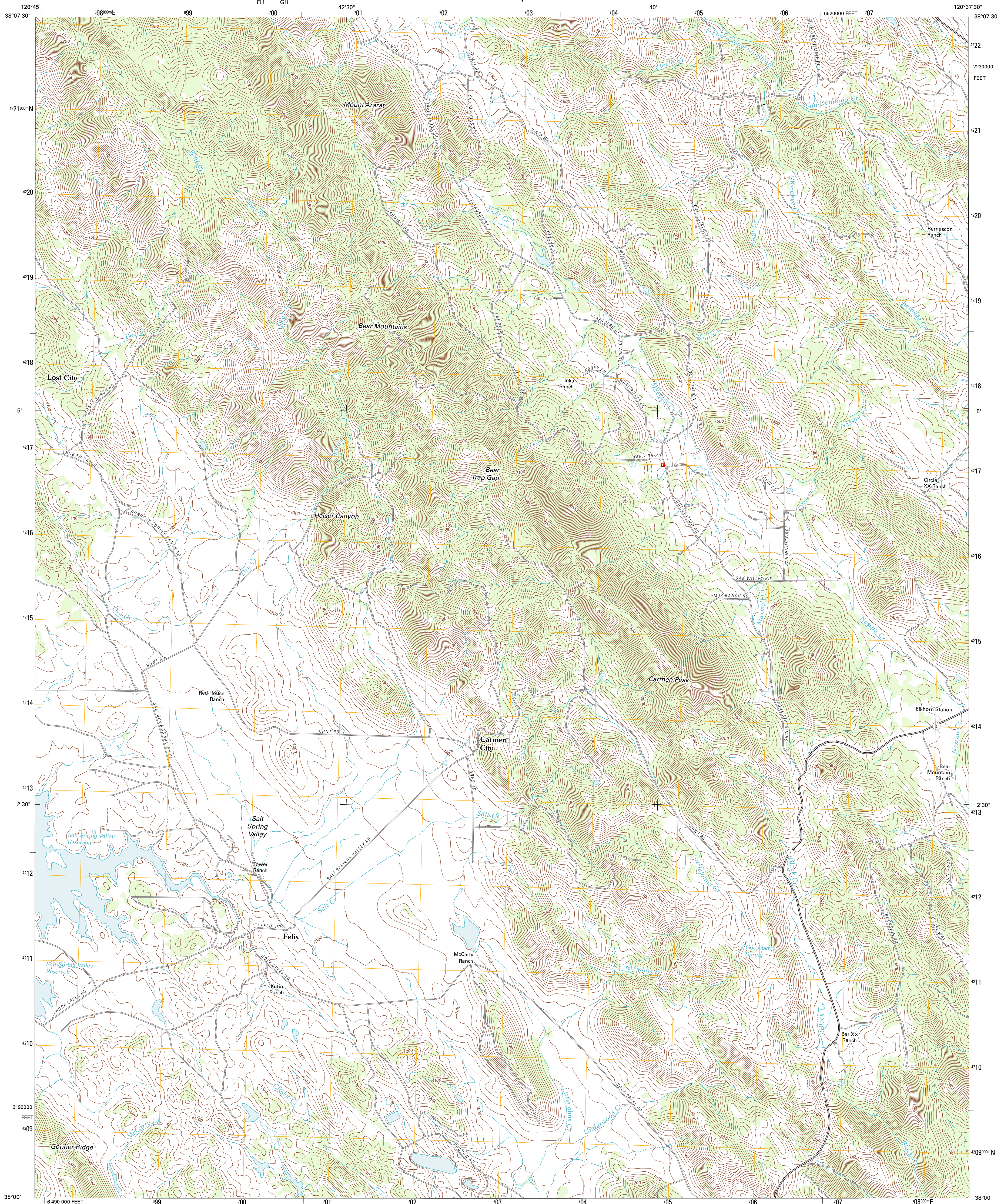




U.S. DEPARTMENT OF THE INTERIOR  
U. S. GEOLOGICAL SURVEY

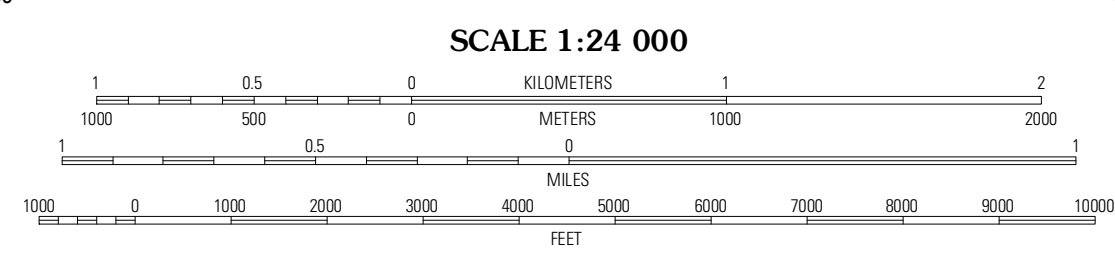
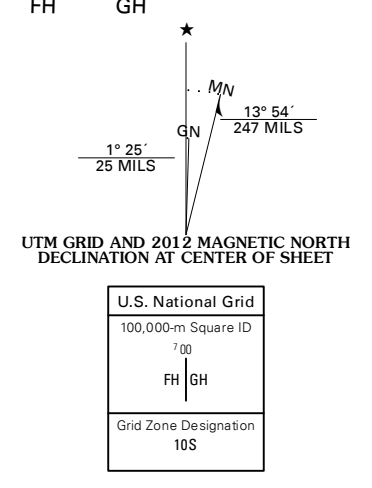


SALT SPRING VALLEY QUADRANGLE  
CALIFORNIA-CALAVERAS CO.  
7.5-MINUTE SERIES



Produced by the United States Geological Survey  
North American Datum of 1983 (NAD83)  
World Geodetic System of 1984 (WGS84) Projection and  
1 000-meter grid; Universal Transverse Mercator, Zone 10S  
10 000-foot ticks; California Coordinate System of 1983  
(zone 3)

Imagery.....NAIP, June 2010  
Roads.....©2006-2011 TomTom  
Names.....GNIS, 2011  
Hydrography.....National Hydrography Dataset, 2010  
Contours.....National Elevation Dataset, 2001  
Boundaries.....Census, IBWC, IBC, USGS, 1972 - 2010



CONTOUR INTERVAL 20 FEET  
NORTH AMERICAN VERTICAL DATUM OF 1988

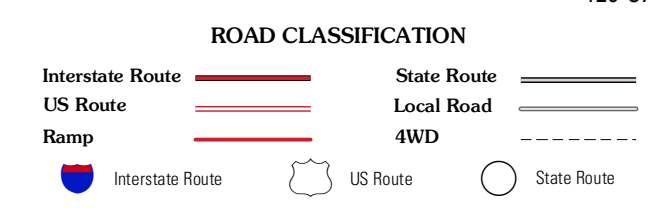
This map was produced to conform with the National Geospatial Program US Topo Product Standard, 2011. A metadata file associated with this product is draft version 0.6.1



QUADRANGLE LOCATION

|                 |                    |                 |
|-----------------|--------------------|-----------------|
| Valley Springs  | San Andreas        | Calaveritas     |
| Jenny Lind      | Salt Spring Valley | Angels Camp     |
| Bachelor Valley | Copperopolis       | New Melones Dam |

ADJOINING 7.5' QUADRANGLES



SALT SPRING VALLEY, CA  
2012