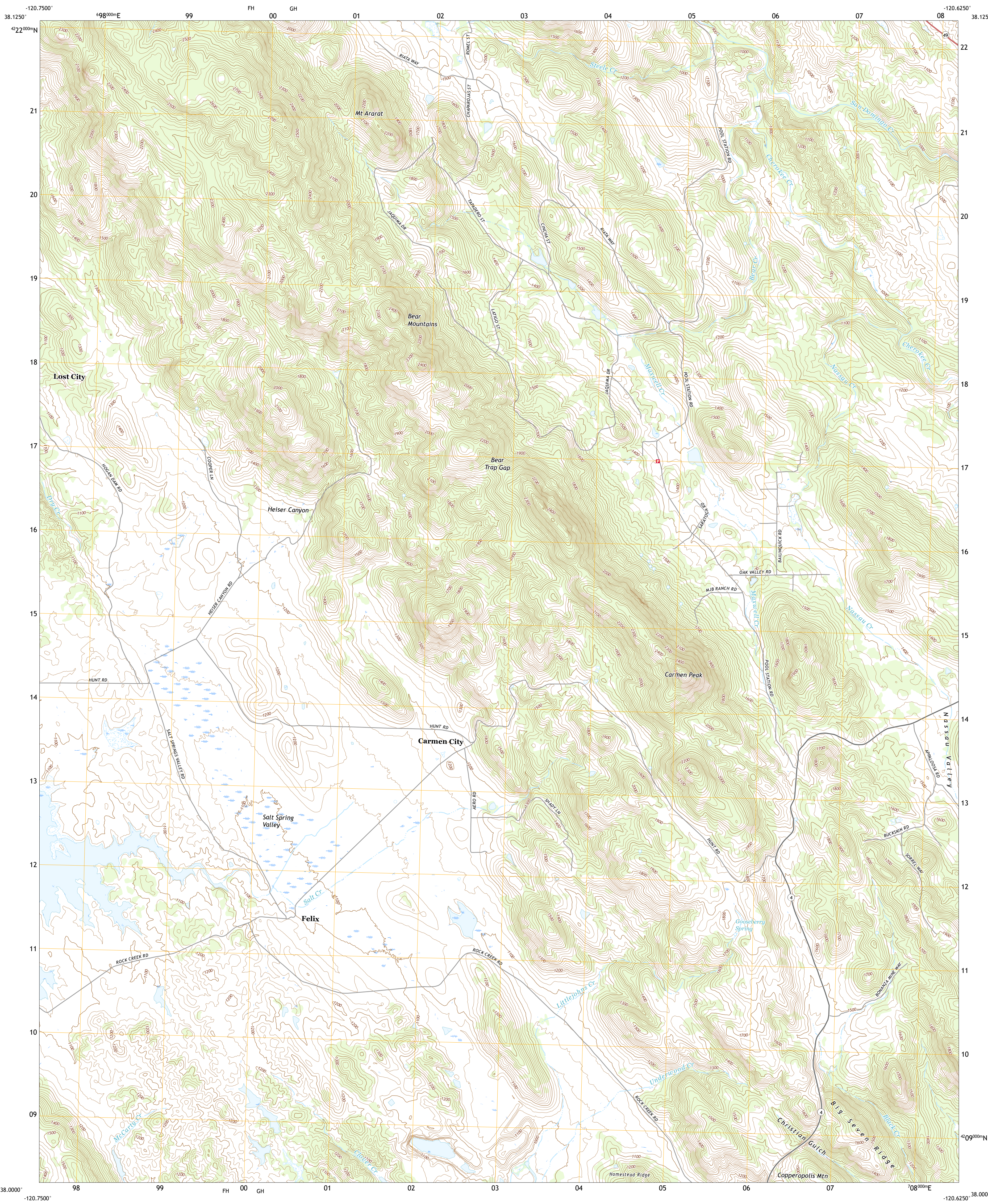




U.S. DEPARTMENT OF THE INTERIOR
U.S. GEOLOGICAL SURVEY



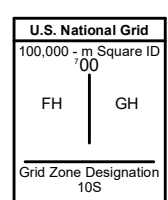
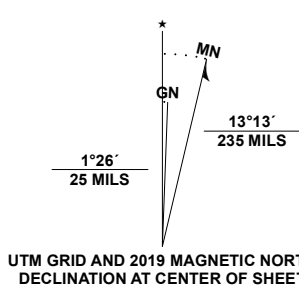
SALT SPRING VALLEY QUADRANGLE
CALIFORNIA - CALAVERAS COUNTY
7.5-MINUTE SERIES



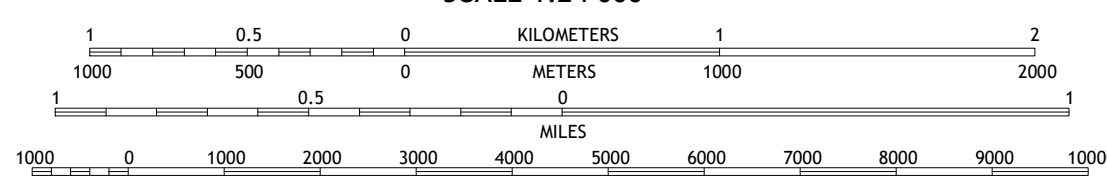
Produced by the United States Geological Survey

North American Datum of 1983 (NAD83)
World Geodetic System of 1984 (WGS84). Projection and
1 000 meter grid/Universal Transverse Mercator, Zone 10S
This map is not a legal document. Boundaries may be
generalized for this map scale. Private lands within government
reservations may not be shown. Obtain permission before
entering private lands.

ImageryN.A.I.P., June 2020U.S. Census Bureau, 2016
NamesG.N.S., 19812021
HydrographyNational Hydrography Dataset, 20022020
ContoursNational Elevation Dataset, 20132013
BoundariesMultiple sources; see metadata file, 20192021
Public Land Survey SystemBLM, 20202020
WetlandsFWS National Wetlands Inventory, 19871987



SCALE 1:24 000



CONTOUR INTERVAL 20 FEET

NORTH AMERICAN VERTICAL DATUM OF 1988

This map was produced to conform with the National Geospatial Program US Topo Product Standard.



ADJOINING QUADRANGLES

1	2	3
4	5	6
7	8	9

1 Valley Springs
2 San Andreas
3 Calaveritas
4 Jenny Lind
5 Angels Camp
6 Bachelor Valley
7 Copperopolis
8 New Melones Dam

