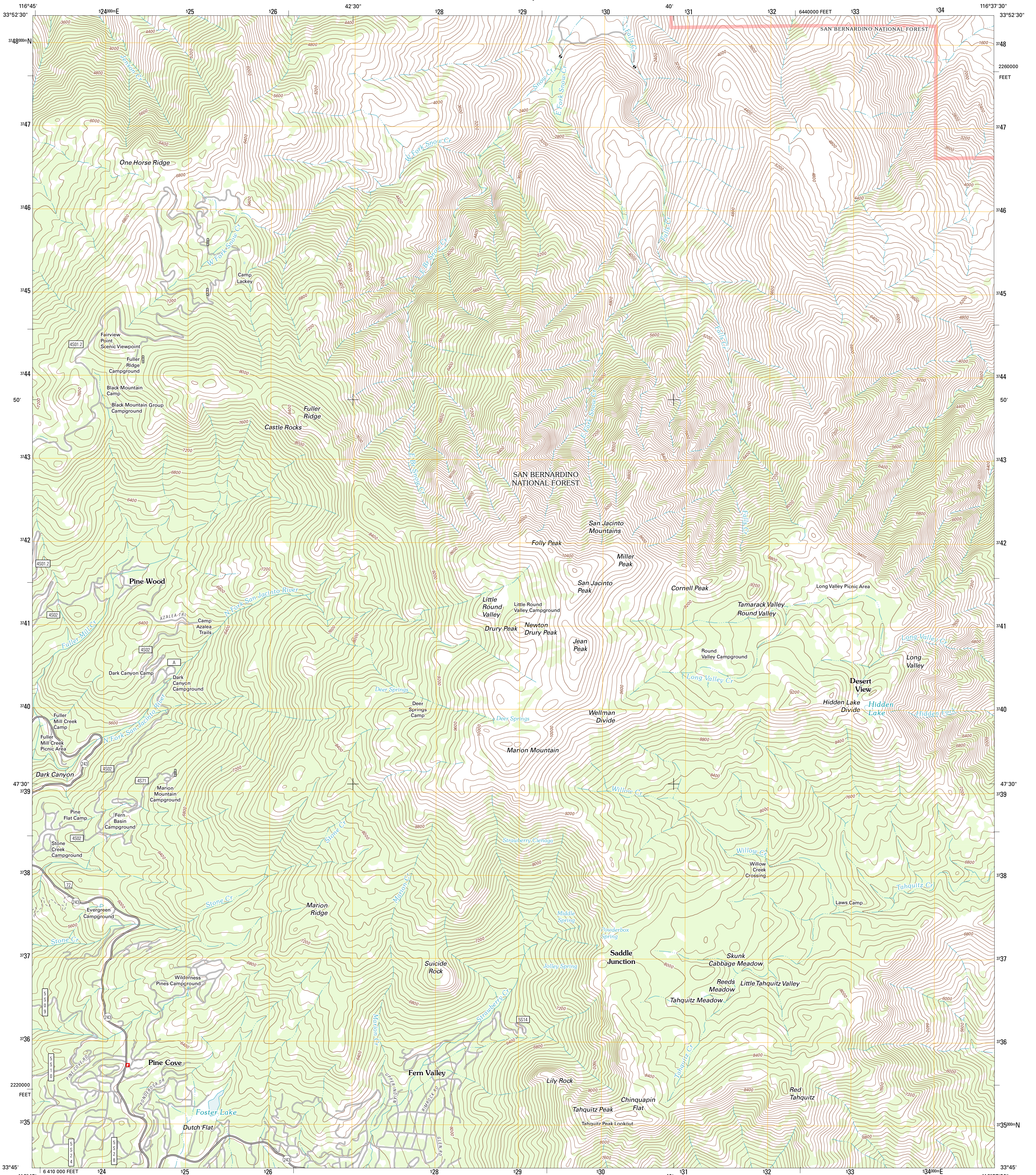




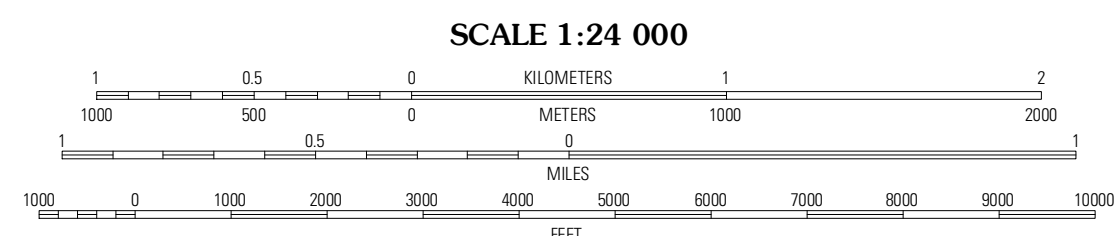
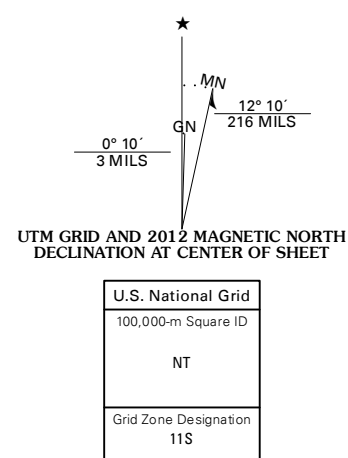
U.S. DEPARTMENT OF THE INTERIOR
U. S. GEOLOGICAL SURVEY



SAN JACINTO PEAK QUADRANGLE
CALIFORNIA-RIVERSIDE CO.
7.5-MINUTE SERIES



Produced by the United States Geological Survey
North American Datum of 1983 (NAD83)
World Geodetic System of 1984 (WGS84). Projection and
1 000-meter grid: Universal Transverse Mercator, Zone 11S
10 000-foot ticks: California Coordinate System of 1983
(zone 6)



CONTOUR INTERVAL 80 FEET
NORTH AMERICAN VERTICAL DATUM OF 1988

This map was produced to conform with the
National Geospatial Program US Topo Product Standard, 2011.
A metadata file associated with this product is draft version 0.6.1



QUADRANGLE LOCATION

Cabazon	White Water	Desert Hot Springs
Lake Fuller	San Jacinto Peak	Palm Springs
Blackburn Canyon	Idyllwild	Palm View Peak

ADJOINING 7.5 QUADRANGLES

ROAD CLASSIFICATION

Interstate Route	State Route
US Route	Local Road
Ramp	4WD
FS Primary Route	FS Passenger Route
	FS High Clearance Route

Check with local Forest Service unit for current travel conditions and restrictions.

SAN JACINTO PEAK, CA
2012

Imagery:.....NAP, May 2010 - July 2010
Roads:.....©2006-2011 TomTom
Roads within US Forest Service Lands:.....FS Topo Data with Limited Forest Service updates, 2009
Names:.....GNIS, 2011
Hydrography:.....National Hydrography Dataset, 2010
Contours:.....National Elevation Dataset, 2000
Boundaries:.....Census, IBWC, IBC, USGS, 1972 - 2010