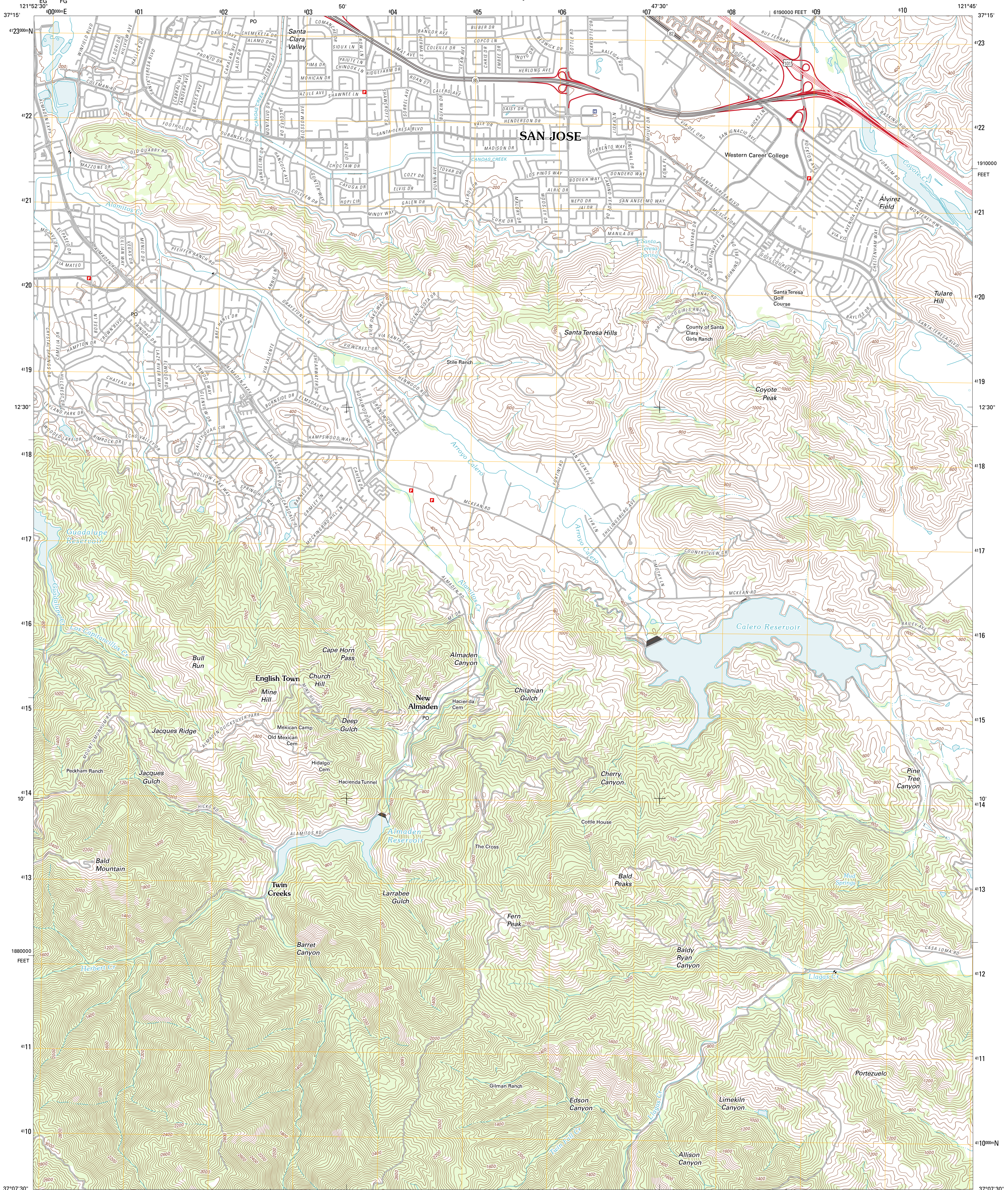




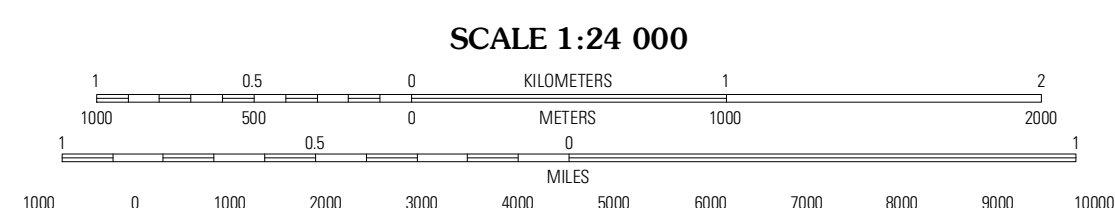
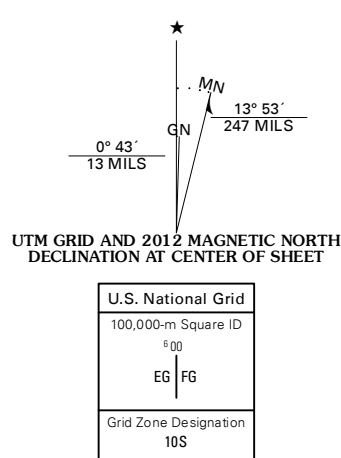
U.S. DEPARTMENT OF THE INTERIOR
U. S. GEOLOGICAL SURVEY



SANTA TERESA HILLS QUADRANGLE
CALIFORNIA-SANTA CLARA CO.
7.5-MINUTE SERIES



Produced by the United States Geological Survey
North American Datum of 1983 (NAD83)
World Geodetic System of 1984 (WGS84). Projection and
1 000-meter grid: Universal Transverse Mercator, Zone 10S
10 000-foot ticks: California Coordinate System of 1983
(zone 3)



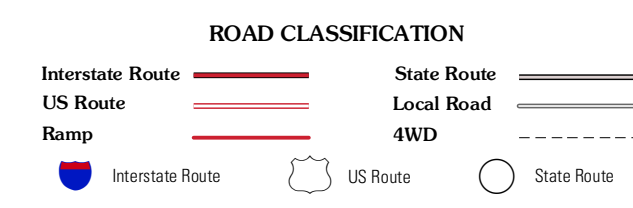
CONTOUR INTERVAL 40 FEET
NORTH AMERICAN VERTICAL DATUM OF 1988

This map was produced to conform with the
National Geospatial Program US Topo Product Standard, 2011.
A metadata file associated with this product is draft version 0.6.1



QUADRANGLE LOCATION

San Jose West	San Jose East	Lick Observatory
Los Gatos	Santa Teresa Hills	Morgan Hill
Laurel	Loma Prieta	Mount Madonna



SANTA TERESA HILLS, CA
2012

ADJOINING 7.5 QUADRANGLES