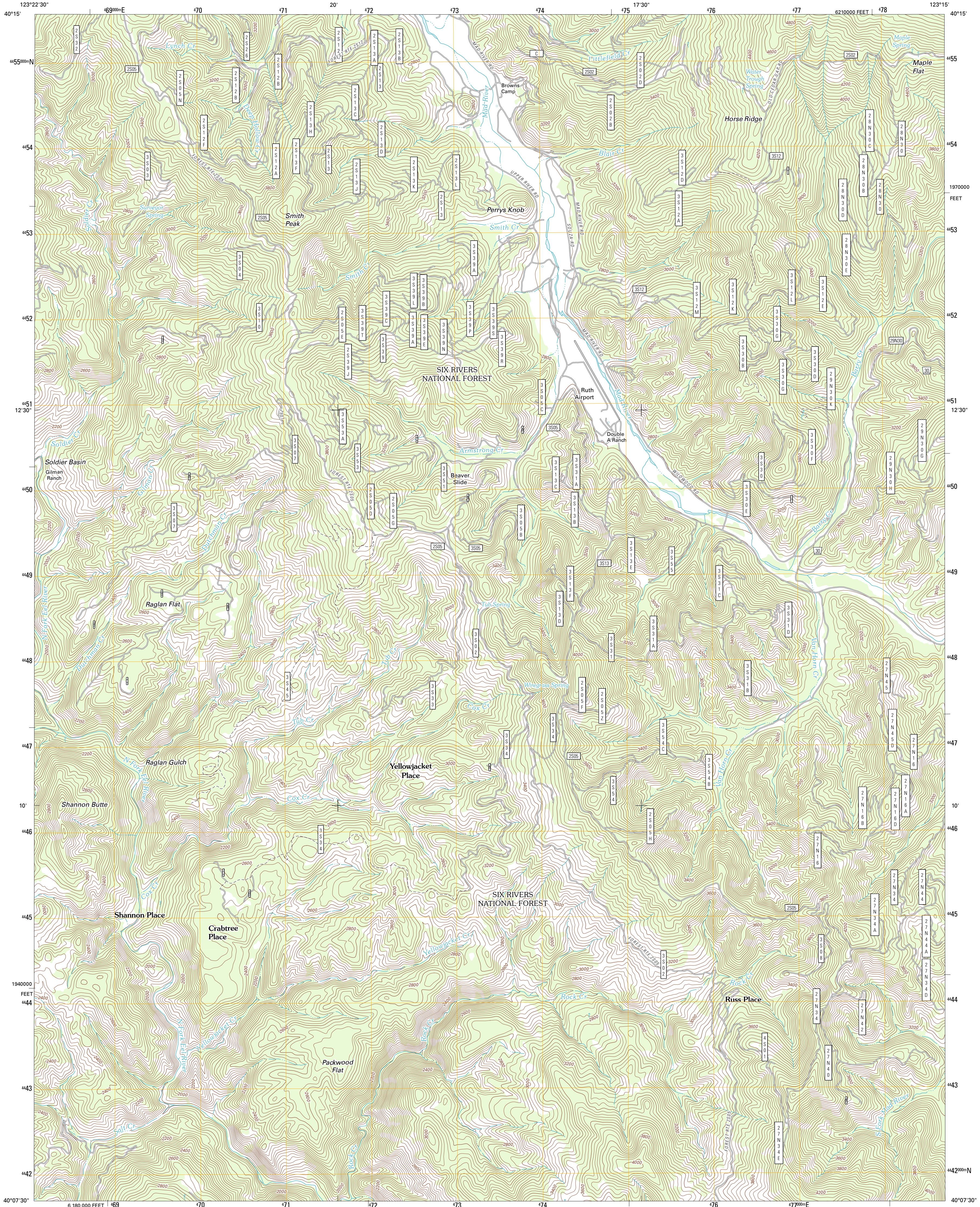




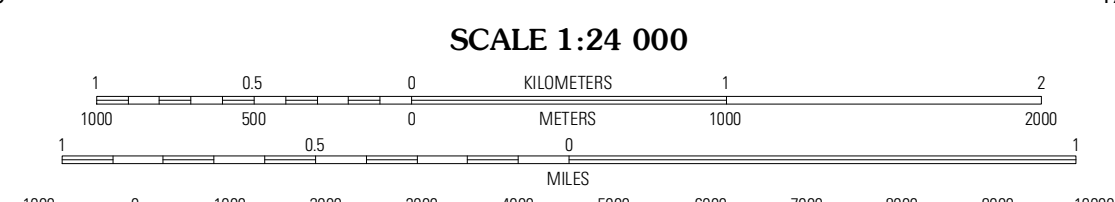
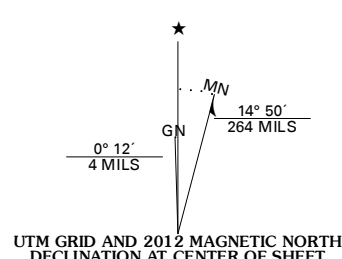
U.S. DEPARTMENT OF THE INTERIOR  
U. S. GEOLOGICAL SURVEY



SHANNON BUTTE QUADRANGLE  
CALIFORNIA-TRINITY CO.  
7.5-MINUTE SERIES



Produced by the United States Geological Survey  
North American Datum of 1983 (NAD83)  
World Geodetic System of 1984 (WGS84). Projection and  
1 000-meter grid: Universal Transverse Mercator, Zone 10T  
10 000-foot ticks: California Coordinate System of 1983  
(zone 1)



QUADRANGLE LOCATION

Bath Lake	Forest Glen	Smoky Creek
Zenia	Shannon Butte	Swim Ridge
Lake Mountain	Long Ridge	Four Corners Rock

ADJOINING 7.5' QUADRANGLES

**ROAD CLASSIFICATION**

Interstate Route (thick red line)  
US Route (red line)  
Ramp (red line with blue triangle)State Route (thin red line)  
Local Road (black line)  
4WD (dashed black line)FS Primary Route (black line with square)FS Passenger Route (black line with circle)FS High Clearance Route (black line with triangle)FS (black line)

Check with local Forest Service unit for current travel conditions and restrictions.

Imagery: N.A.P., July 2010  
Roads: 2006-2011 TomTom  
Roads within US Forest Service Lands with limited Forest Service updates, 2009  
Names: G.N.S., 2011  
Hydrography: National Hydrography Dataset, 2010  
Contours: National Elevation Dataset, 1999  
Boundaries: Census, BWC, IBC, USGS, 1972-2010

CONTOUR INTERVAL 40 FEET  
NORTH AMERICAN VERTICAL DATUM OF 1988

This map was produced to conform with the National Geospatial Program US Topo Product Standard, 2011. A metadata file associated with this product is draft version 0.6.1

SHANNON BUTTE, CA  
2012