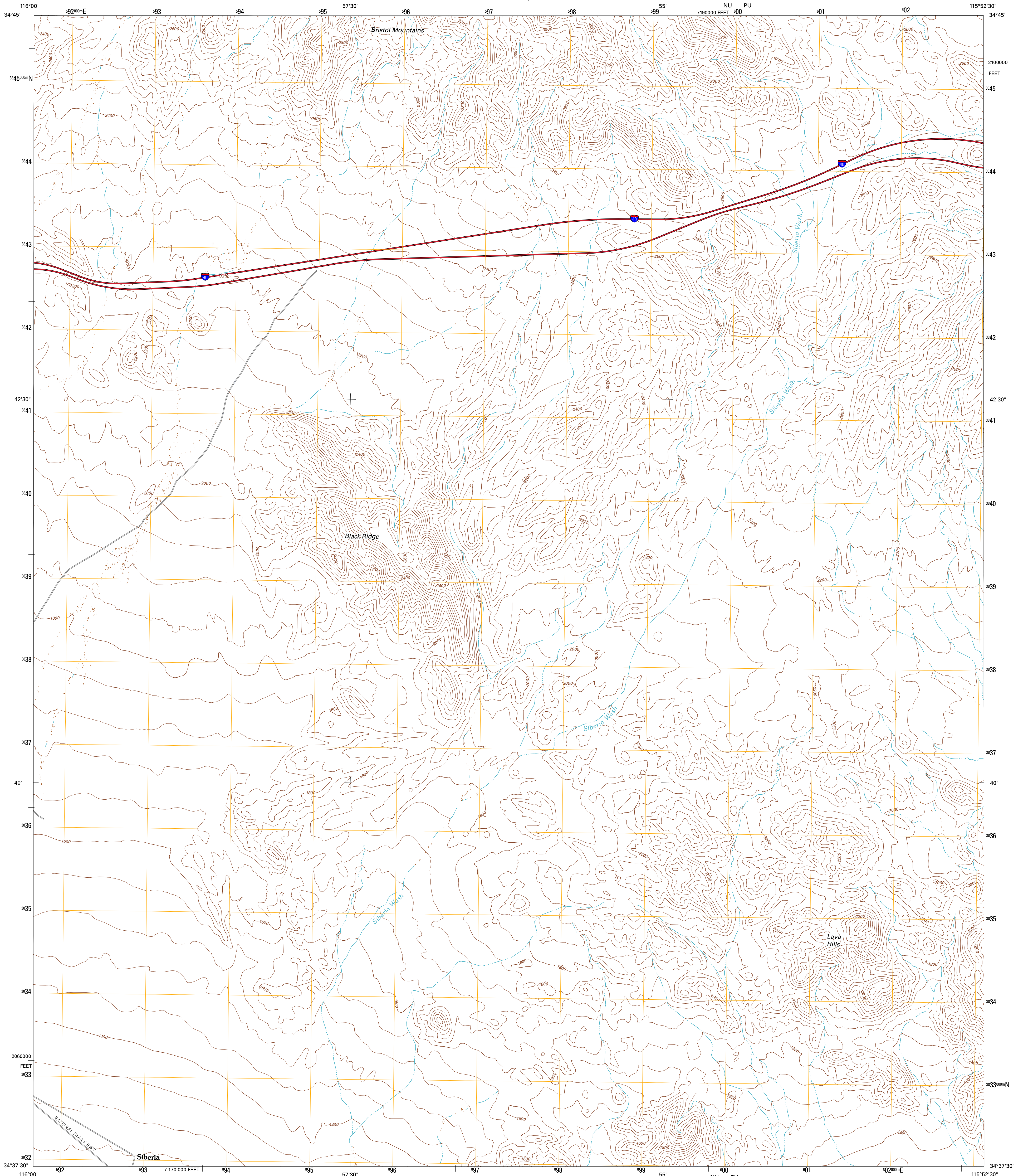




U.S. DEPARTMENT OF THE INTERIOR
U. S. GEOLOGICAL SURVEY

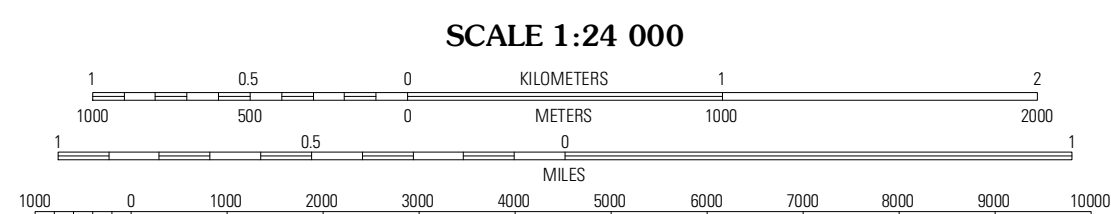
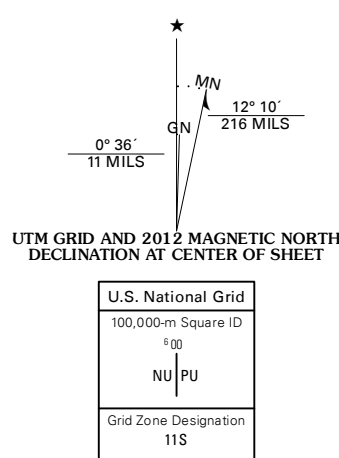


SIBERIA QUADRANGLE
CALIFORNIA-SAN BERNARDINO CO.
7.5-MINUTE SERIES



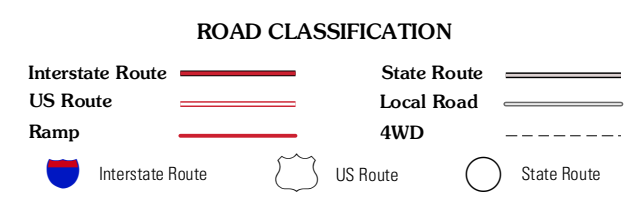
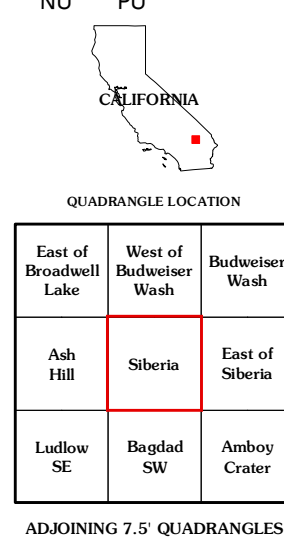
Produced by the United States Geological Survey
North American Datum of 1983 (NAD83)
World Geodetic System of 1984 (WGS84). Projection and
1 000-meter grid: Universal Transverse Mercator, Zone 11S
10 000-foot ticks: California Coordinate System of 1983
(zone 5)

Imagery:.....NAIP, April 2010 - May 2010
Roads:.....©2006-2011 TomTom
Names:.....GNIS, 2011
Hydrography:.....National Hydrography Dataset, 2010
Contours:.....National Elevation Dataset, 2006
Boundaries:.....Census, IBWC, IBC, USGS, 1972 - 2010



CONTOUR INTERVAL 40 FEET
NORTH AMERICAN VERTICAL DATUM OF 1988

This map was produced to conform with the
National Geospatial Program US Topo Product Standard, 2011.
A metadata file associated with this product is draft version 0.6.1



SIBERIA, CA
2012

ADJOINING 7.5 QUADRANGLES