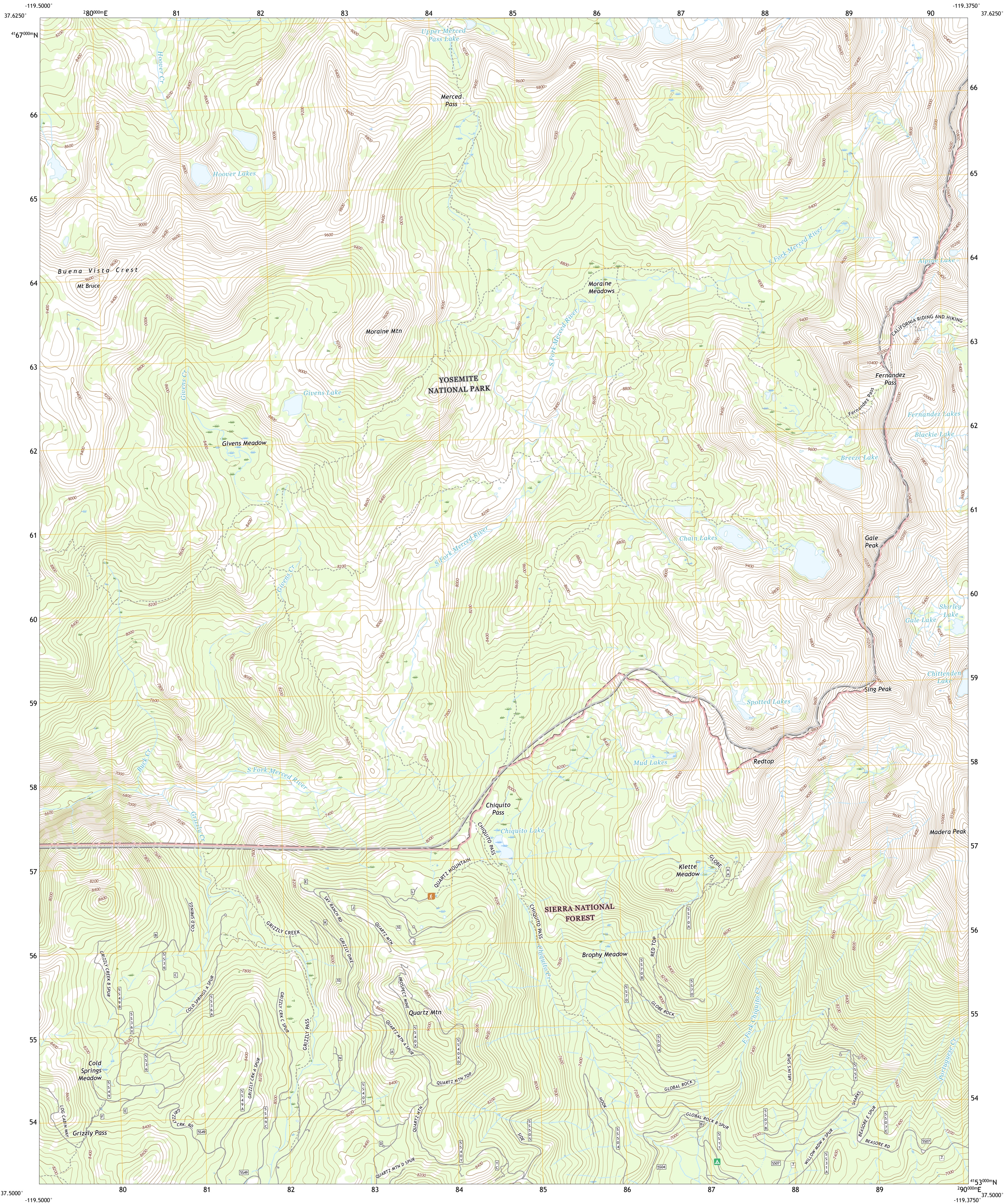




U.S. DEPARTMENT OF THE INTERIOR
U.S. GEOLOGICAL SURVEY

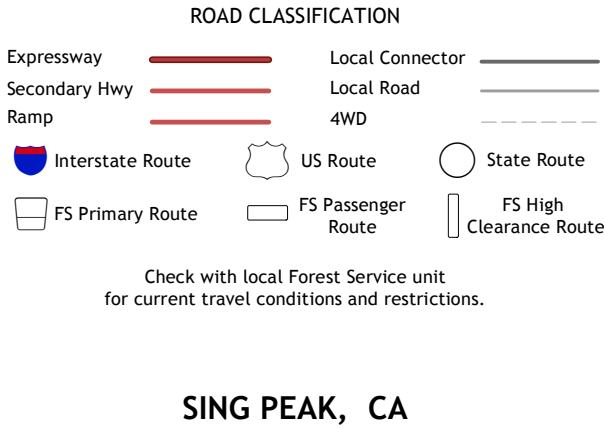
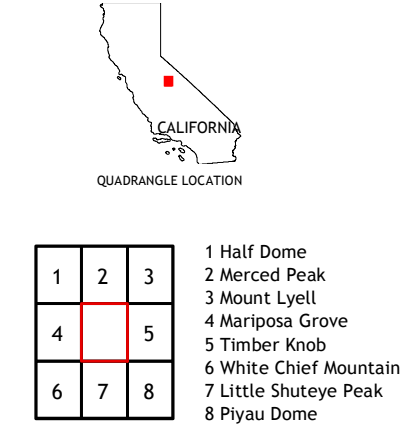
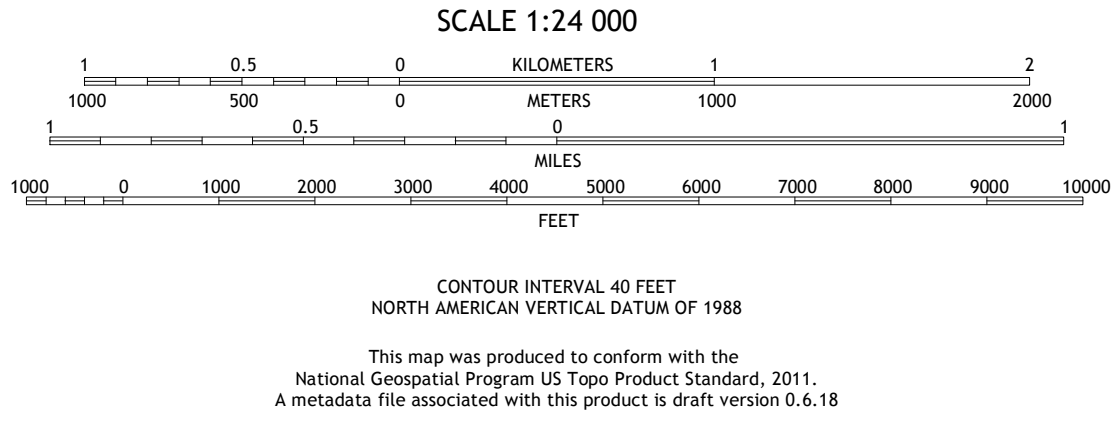
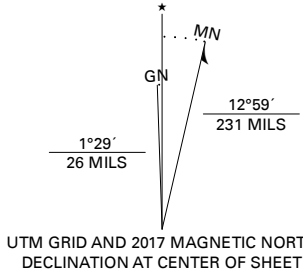


SING PEAK QUADRANGLE
CALIFORNIA - MADERA COUNTY
7.5-MINUTE SERIES



Produced by the United States Geological Survey
North American Datum of 1983 (NAD83)
World Geodetic System of 1984 (WGS84). Projection and
1 000-meter grid/Universal Transverse Mercator, Zone 11S
This map is not a legal document. Boundaries may be
generalized for this map scale. Private lands within government
reservations may not be shown. Obtain permission before
entering private lands.

Imagery.....N.A.P., July 2016 - October 2016
Roads.....U.S. Census Bureau, 2018
Roads within US Forest Service Lands.....FS Topo
Data with limited Forest Service updates, 2018
Names.....GNIS, 1981
Hydrography.....National Hydrography Dataset, 2002 - 2018
Contours.....National Elevation Dataset, 2001
Boundaries.....Multiple sources; see metadata file
Public Land Survey System.....BLM, 2018
Wetlands.....FWS National Wetlands Inventory 1985 - 1987



SING PEAK, CA
2018

