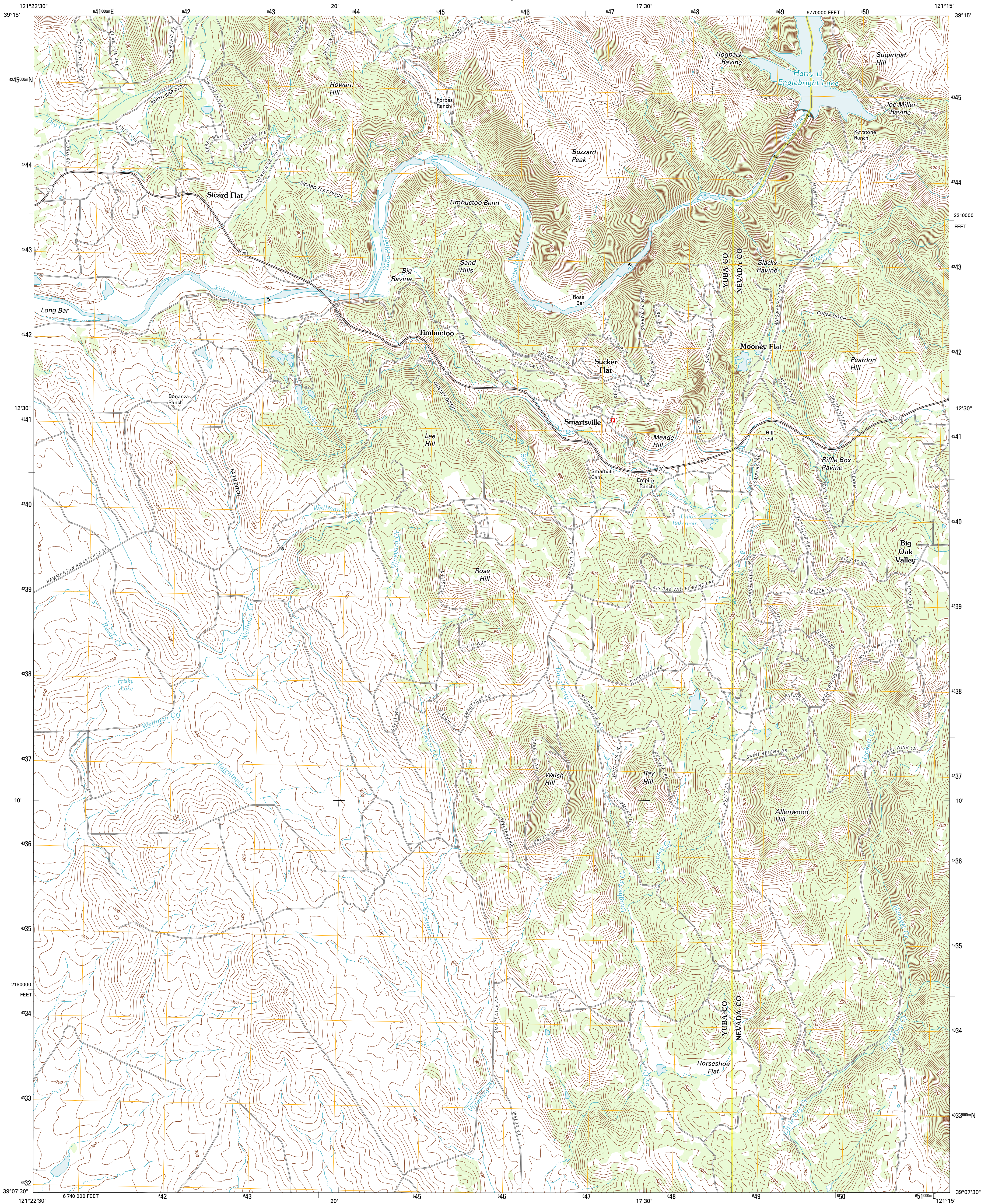




U.S. DEPARTMENT OF THE INTERIOR
U. S. GEOLOGICAL SURVEY

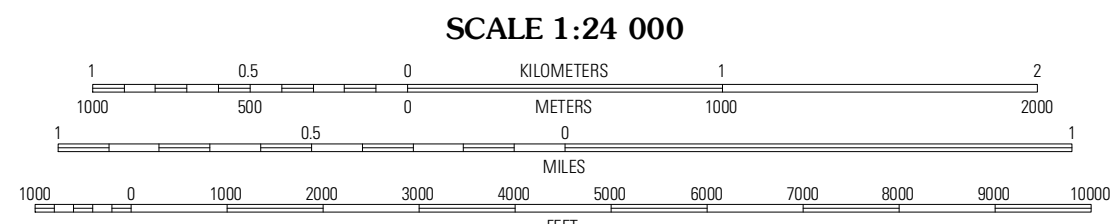
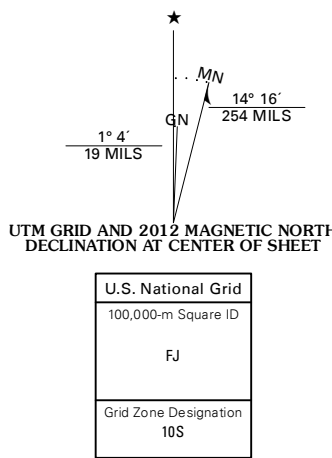


SMARTSVILLE QUADRANGLE
CALIFORNIA
7.5-MINUTE SERIES



Produced by the United States Geological Survey
North American Datum of 1983 (NAD83)
World Geodetic System of 1984 (WGS84). Projection and
1 000-meter grid: Universal Transverse Mercator, Zone 10S
10 000-foot ticks: California Coordinate System of 1983
(zone 2)

Imagery.....NAIP, July 2010
Roads.....©2006-2011 TomTom
Names.....©2006-2011 TomTom
Hydrography.....National Hydrography Dataset, 2010
Contours.....National Elevation Dataset, 2003
Boundaries.....Census, IBWC, IBC, USGS, 1972 - 2010



CONTOUR INTERVAL 20 FEET
NORTH AMERICAN VERTICAL DATUM OF 1988
This map was produced to conform with the
National Geospatial Program US Topo Product Standard, 2011.
A metadata file associated with this product is draft version 0.6.1



Loma Rica	Oregon House	French Corral
Browns Valley	Smartsville	Rough And Ready
Wheatland	Camp Far West	Wolf

ROAD CLASSIFICATION
Interstate Route
US Route
Ramp
State Route
Local Road
4WD

SMARTSVILLE, CA
2012