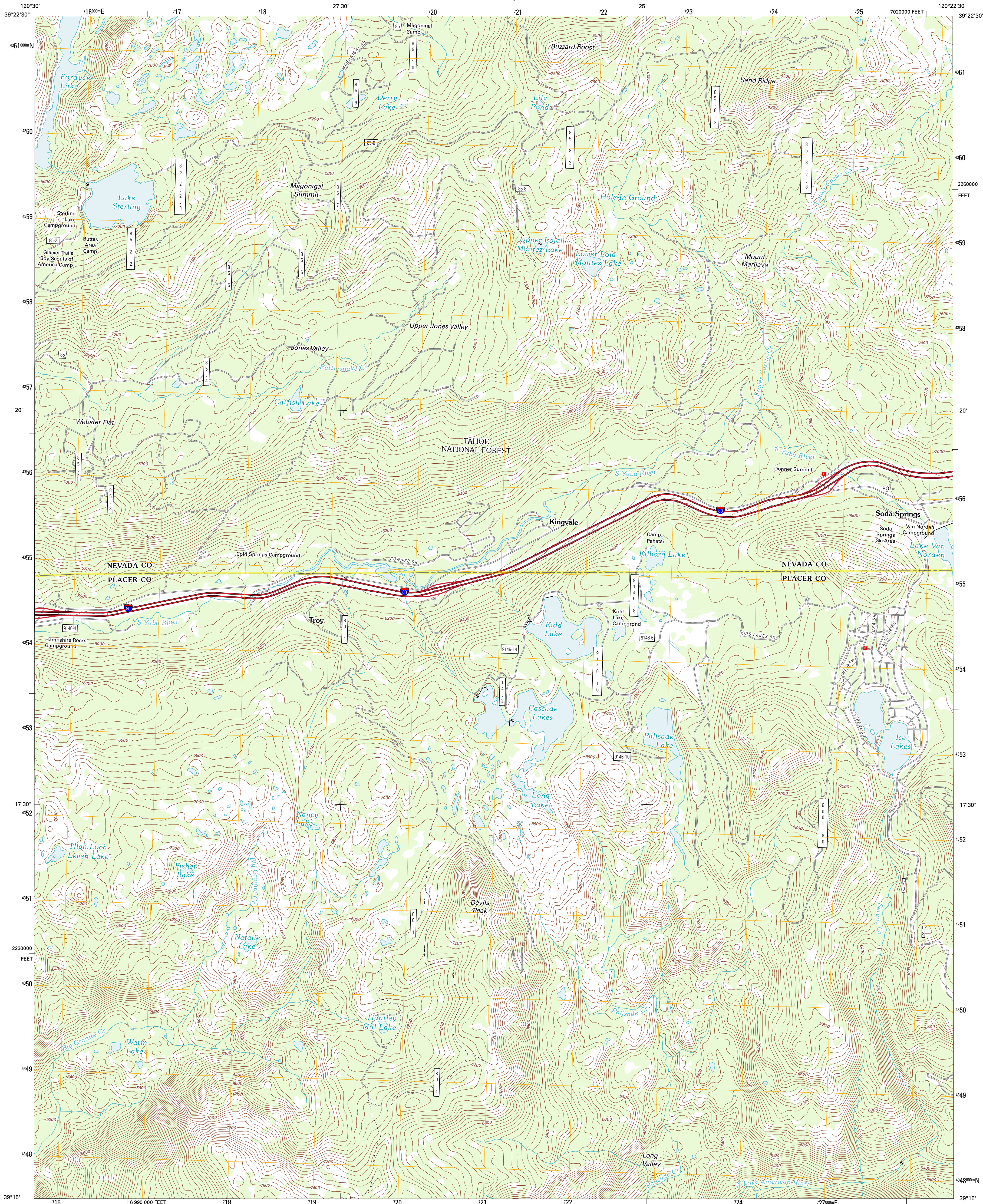




U.S. DEPARTMENT OF THE INTERIOR  
U. S. GEOLOGICAL SURVEY

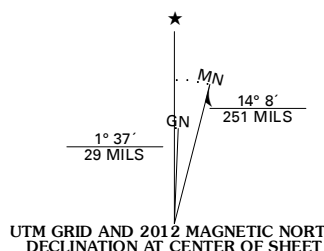


SODA SPRINGS QUADRANGLE  
CALIFORNIA  
7.5-MINUTE SERIES

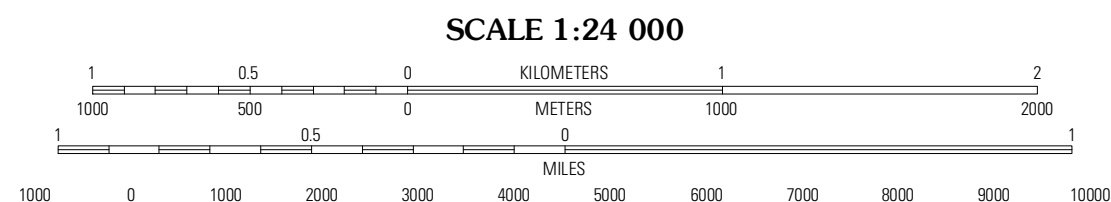


Produced by the United States Geological Survey  
North American Datum of 1983 (NAD83)  
World Geodetic System of 1984 (WGS84). Projection and  
1 000-meter grid. Universal Transverse Mercator, Zone 10S  
10 000-foot ticks. California Coordinate System of 1983  
(zone 2)

Imagery.....NAIP, July 2010  
Roads.....©2006-2011 TomTom  
Roads within US Forest Service Lands.....FS Topo Data  
with limited Forest Service updates, 2009  
Names.....GNIS, 2011  
Hydrography.....National Hydrography Dataset, 2010  
Contours.....National Elevation Dataset, 1999  
Boundaries.....Census, IBWC, IBC, USGS, 1972 - 2010



|                       |
|-----------------------|
| U.S. National Grid    |
| 100,000m Square ID    |
| GJ                    |
| Grid Zone Designation |
| 18S                   |



CONTOUR INTERVAL 40 FEET  
NORTH AMERICAN VERTICAL DATUM OF 1988  
This map was produced to conform with the  
National Geospatial Program US Topo Product Standard, 2011.  
A metadata file associated with this product is draft version 0.6.1



| ADJOINING 7.5' QUADRANGLES |              |                   |
|----------------------------|--------------|-------------------|
| English Mountain           | Webber Peak  | Independence Lake |
| Chico Grove                | Soda Springs | Norden            |
| Duncan Peak                | Royal Gorge  | Granite Chief     |

| ROAD CLASSIFICATION |                         |
|---------------------|-------------------------|
| Interstate Route    | State Route             |
| US Route            | Local Road              |
| Ramp                | 4WD                     |
| Interstate Route    | US Route                |
| FS Primary Route    | FS Passenger Route      |
|                     | FS High Clearance Route |

Check with local Forest Service unit  
for current travel conditions and restrictions.

SODA SPRINGS, CA  
2012