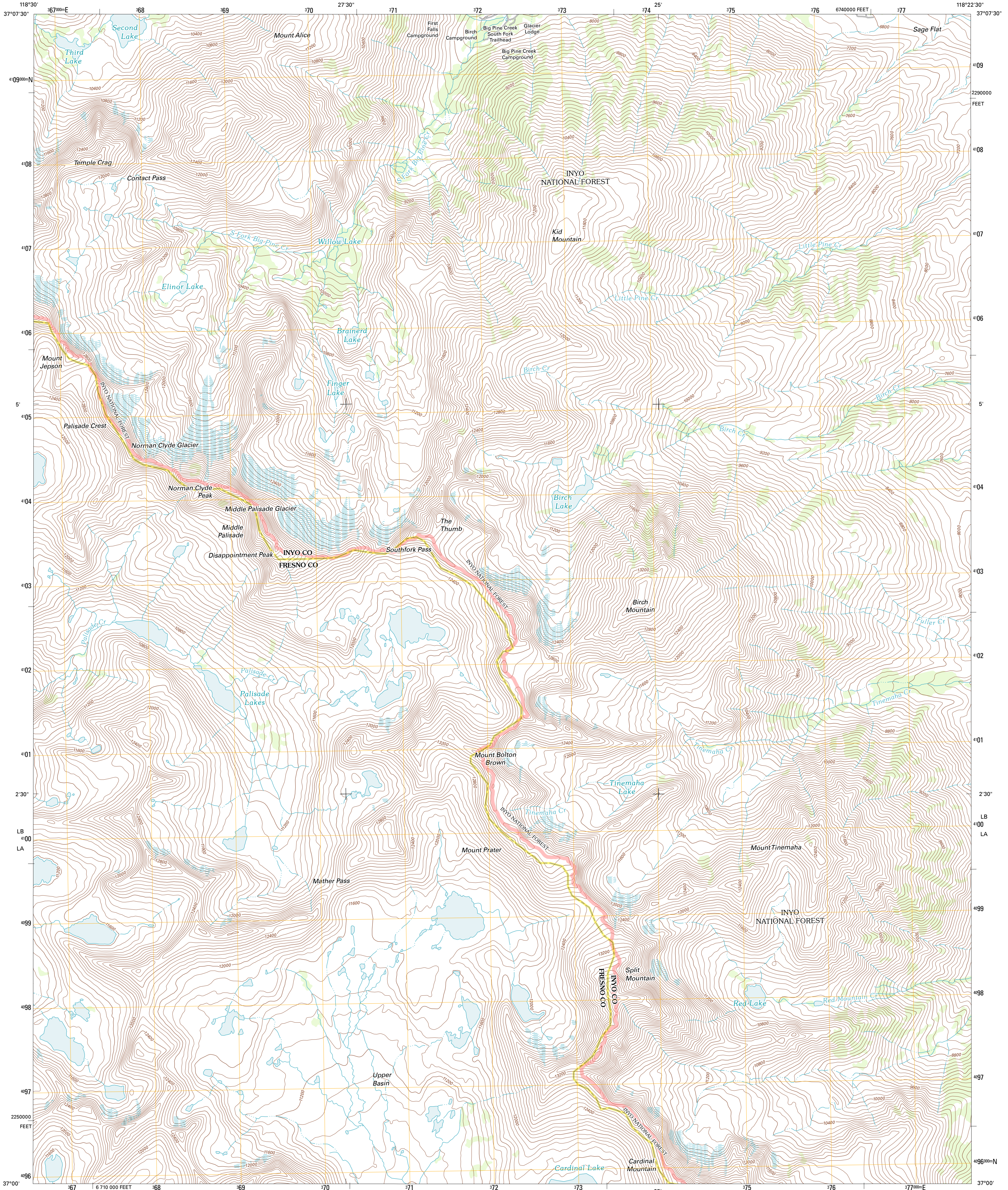




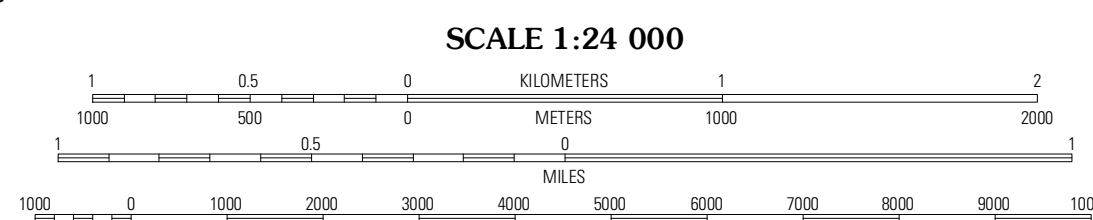
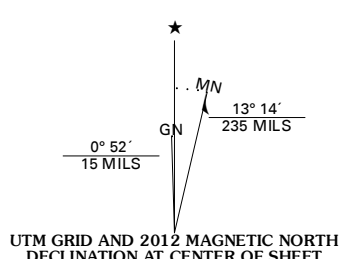
U.S. DEPARTMENT OF THE INTERIOR  
U. S. GEOLOGICAL SURVEY



**SPLIT MOUNTAIN QUADRANGLE**  
CALIFORNIA  
7.5-MINUTE SERIES



Produced by the United States Geological Survey  
North American Datum of 1983 (NAD83)  
World Geodetic System of 1984 (WGS84). Projection and  
1 000-meter grid: Universal Transverse Mercator, Zone 11S  
10 000-foot ticks: California Coordinate System of 1983  
(zone 4)

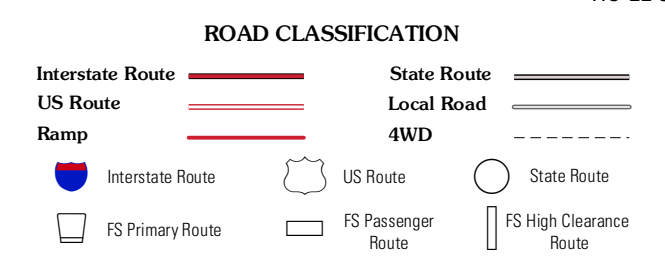


CONTOUR INTERVAL 80 FEET  
NORTH AMERICAN VERTICAL DATUM OF 1988  
This map was produced to conform with the  
National Geospatial Program US Topo Product Standard, 2011.  
A metadata file associated with this product is draft version 0.6.1



QUADRANGLE LOCATION

Mount Thompson	Coyote Flat	Big Pine
North Palisade	<b>Split Mountain</b>	Fish Springs
Marion Peak	Mount Pinchot	Aberdeen



Check with local Forest Service unit for current travel conditions and restrictions.

**SPLIT MOUNTAIN, CA**  
2012

ADJOINING 7.5 QUADRANGLES

Imagery:.....NAP, August 2010 - September 2010  
Roads:.....©2006-2011 TomTom  
Roads within US Forest Service Lands.....FS Topo Data  
with limited Forest Service updates, 2009  
Names:.....GNIS, 2011  
Hydrography:.....National Hydrography Dataset, 2010  
Contours:.....National Elevation Dataset, 2001  
Boundaries:.....Census, IBWC, IBC, USGS, 1972 - 2010

U.S. National Grid	100,000m Square ID
LA	LB
Grid Zone Designation	11S