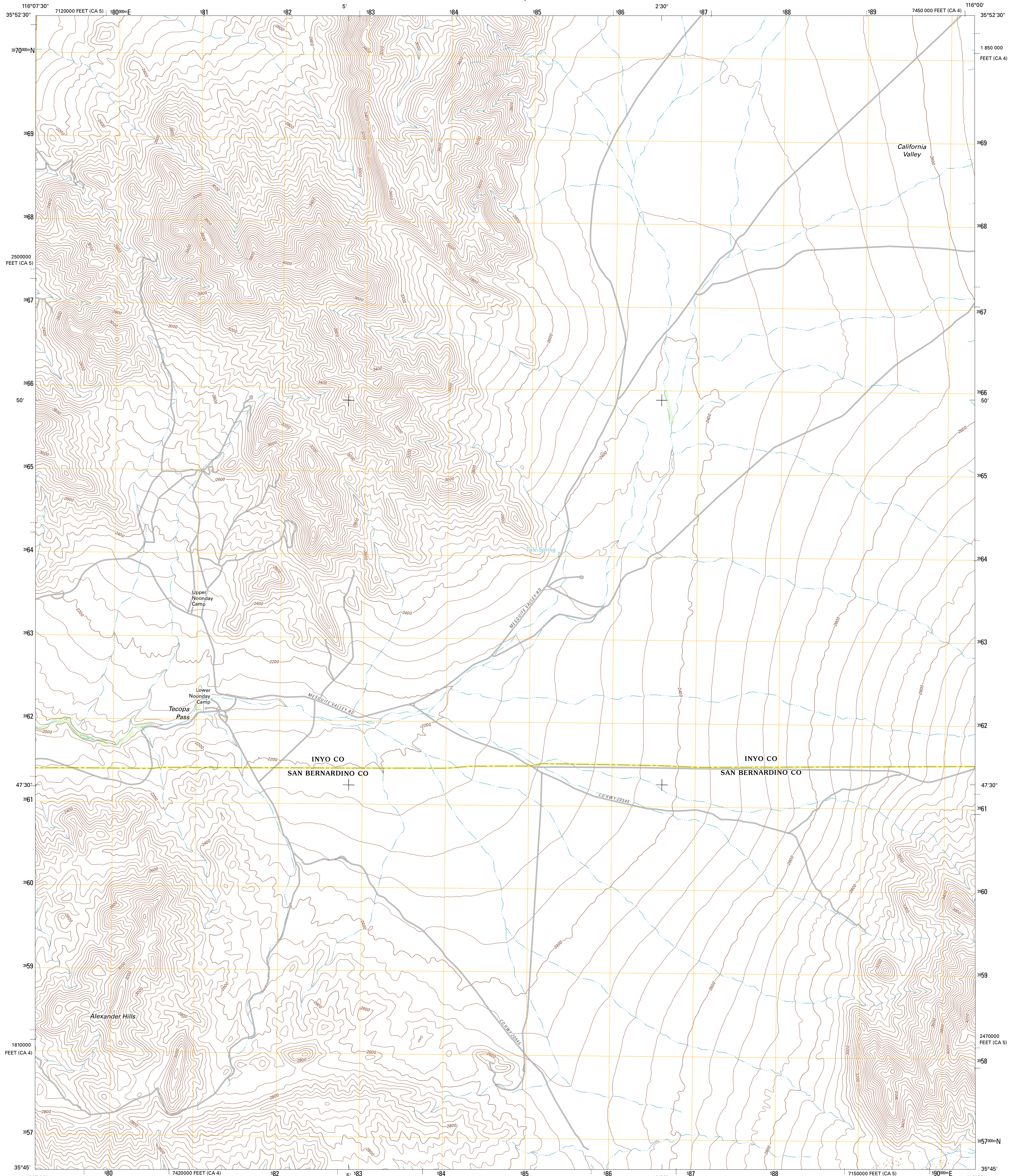




U.S. DEPARTMENT OF THE INTERIOR
U. S. GEOLOGICAL SURVEY

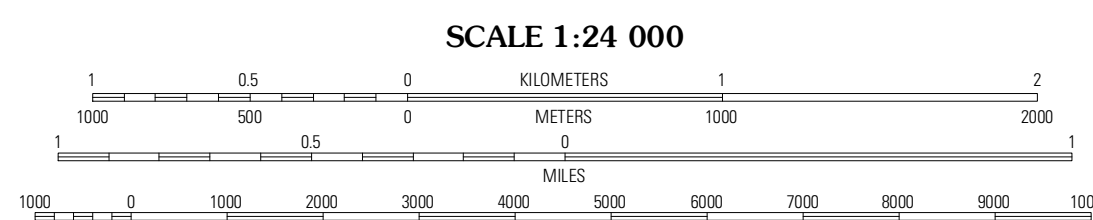
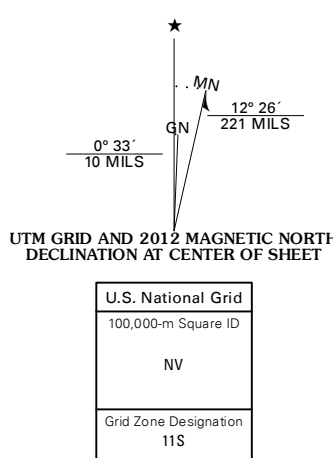


TECOPA PASS QUADRANGLE
CALIFORNIA
7.5-MINUTE SERIES



Produced by the United States Geological Survey
North American Datum of 1983 (NAD83)
World Geodetic System of 1984 (WGS84) Projection and
1 000-meter grid: Universal Transverse Mercator, Zone 11S
10 000-foot ticks: California Coordinate System of 1983
(zones 4 and 5)

Imagery.....NAIP, April 2010 - July 2010
Roads.....©2006-2011 TomTom
Names.....GNIS, 2011
Hydrography.....National Hydrography Dataset, 2010
Contours.....National Elevation Dataset, 2006
Boundaries.....Census, IBWC, IBC, USGS, 1972 - 2010

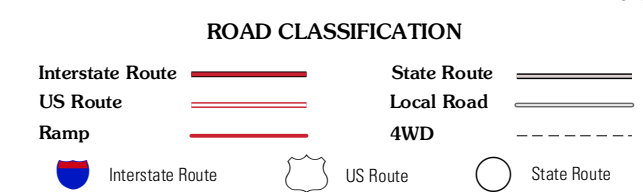


CONTOUR INTERVAL 40 FEET
NORTH AMERICAN VERTICAL DATUM OF 1988
This map was produced to conform with the
National Geospatial Program US Topo Product Standard, 2011.
A metadata file associated with this product is draft version 0.6.1



QUADRANGLE LOCATION

Resting Spring	North of Tecopa Pass	Calvada Springs
Tecopa	Tecopa Pass	Horse Thief Springs
Dumont Dunes	Valjean Hills	Kingston Peak



TECOPA PASS, CA
2012

ADJOINING 7.5' QUADRANGLES