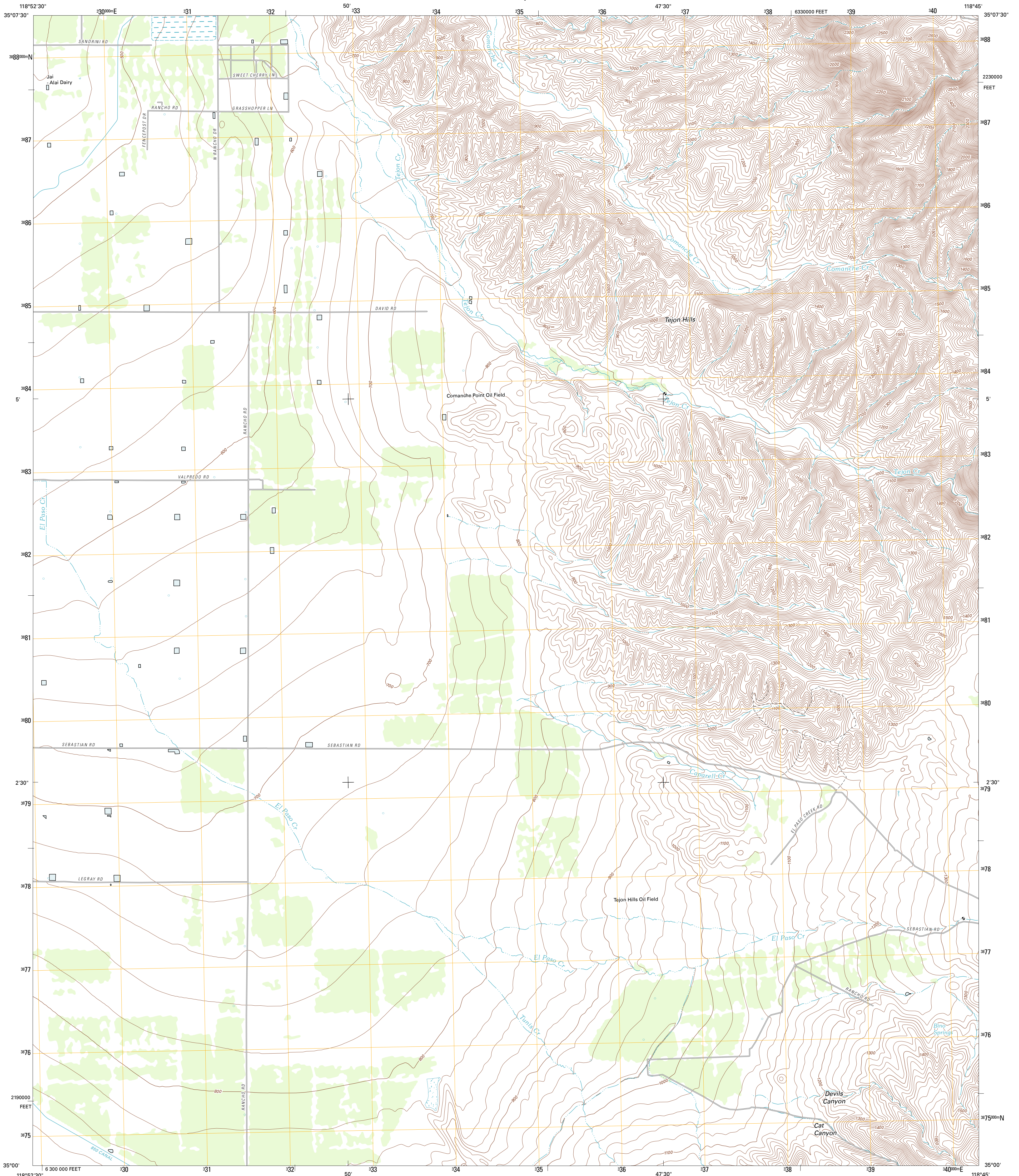




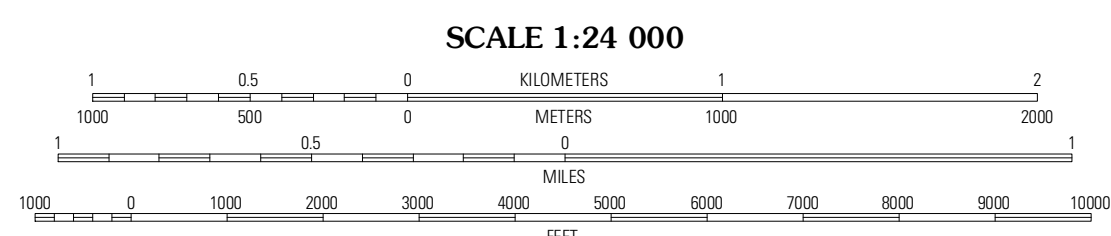
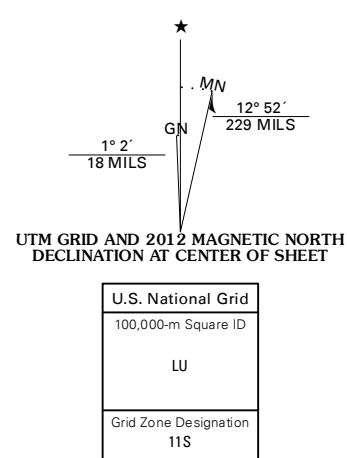
U.S. DEPARTMENT OF THE INTERIOR  
U. S. GEOLOGICAL SURVEY



TEJON HILLS QUADRANGLE  
CALIFORNIA-KERN CO.  
7.5-MINUTE SERIES



Produced by the United States Geological Survey  
North American Datum of 1983 (NAD83)  
Roads..... ©2006-2011 TomTom  
Hydrography..... National Hydrography Dataset, 2010  
Contours..... National Elevation Dataset, 2006  
Boundaries..... Census, BWC, IBC, USGS, 1972 - 2010  
(zone 5)



CONTOUR INTERVAL 20 FEET  
NORTH AMERICAN VERTICAL DATUM OF 1988

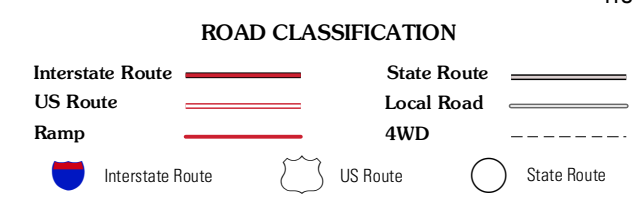
This map was produced to conform with the National Geospatial Program US Topo Product Standard, 2011. A metadata file associated with this product is draft version 0.6.1



QUADRANGLE LOCATION

Weed Patch	Arvin	Bear Mountain
Mettler	Tejon Hills	Tejon Ranch
Grapesvine	Pastoria Creek	Winters Ridge

ADJOINING 7.5' QUADRANGLES



TEJON HILLS, CA  
2012