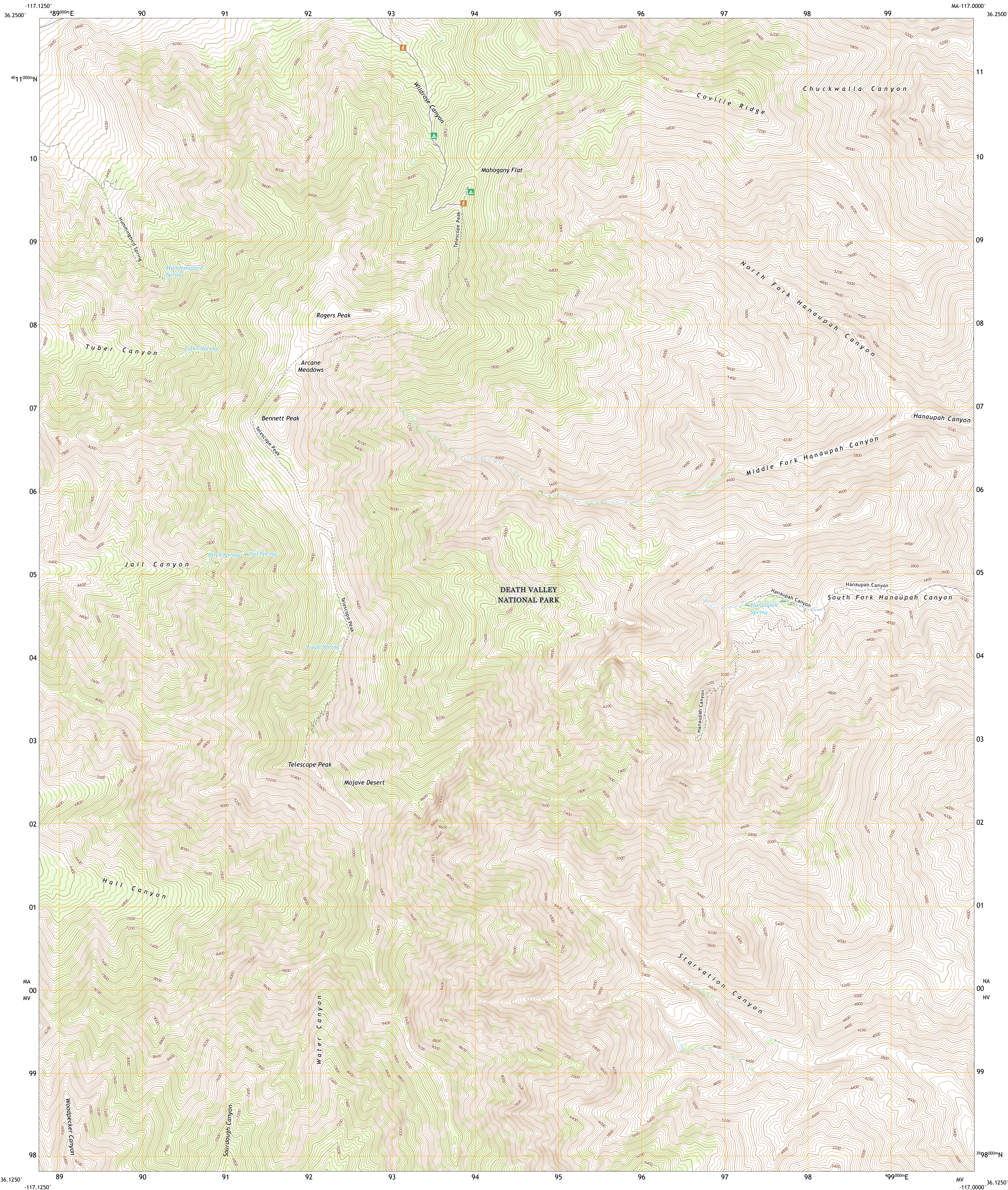




U.S. DEPARTMENT OF THE INTERIOR  
U.S. GEOLOGICAL SURVEY

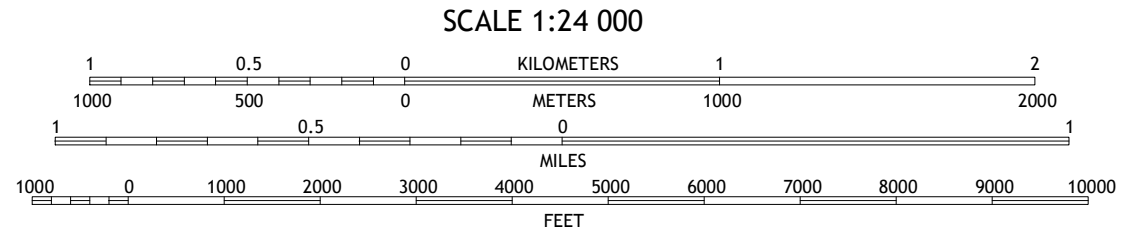
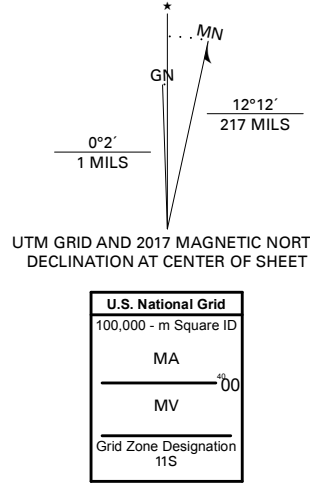


TELESCOPE PEAK QUADRANGLE  
CALIFORNIA - INYO COUNTY  
7.5-MINUTE SERIES



Produced by the United States Geological Survey

North American Datum of 1983 (NAD83)  
World Geodetic System of 1984 (WGS84) Projection and  
1 000 meter grid/Universal Transverse Mercator, Zone 11S  
This map is not a legal document. Boundaries may be  
generalized for this map scale. Private lands within government  
reservations may not be shown. Obtain permission before  
entering private lands.  
Imagery.....NAIP, July 2016 - October 2016  
Roads.....U.S. Census Bureau, 2017 2018  
Names.....GNIS, 1981 2017  
Hydrography.....National Hydrography Dataset, 2011 - 2018  
Contours.....National Elevation Dataset, 2007  
Boundaries.....Multiple sources; see metadata file  
Public Land Survey System.....BLM, 2016  
Wetlands.....FWS National Wetlands Inventory 1983 - 1986



CONTOUR INTERVAL 40 FEET  
NORTH AMERICAN VERTICAL DATUM OF 1988  
This map was produced to conform with the  
National Geospatial Program US Topo Product Standard, 2011.  
A metadata file associated with this product is draft version 0.6.18



1	2	3
4	5	6
7	8	9

ADJOINING QUADRANGLES

ROAD CLASSIFICATION		
Expressway	Local Connector	
Secondary Hwy	Local Road	
Ramp	4WD	
Interstate Route	US Route	State Route

TELESCOPE PEAK, CA  
2018

