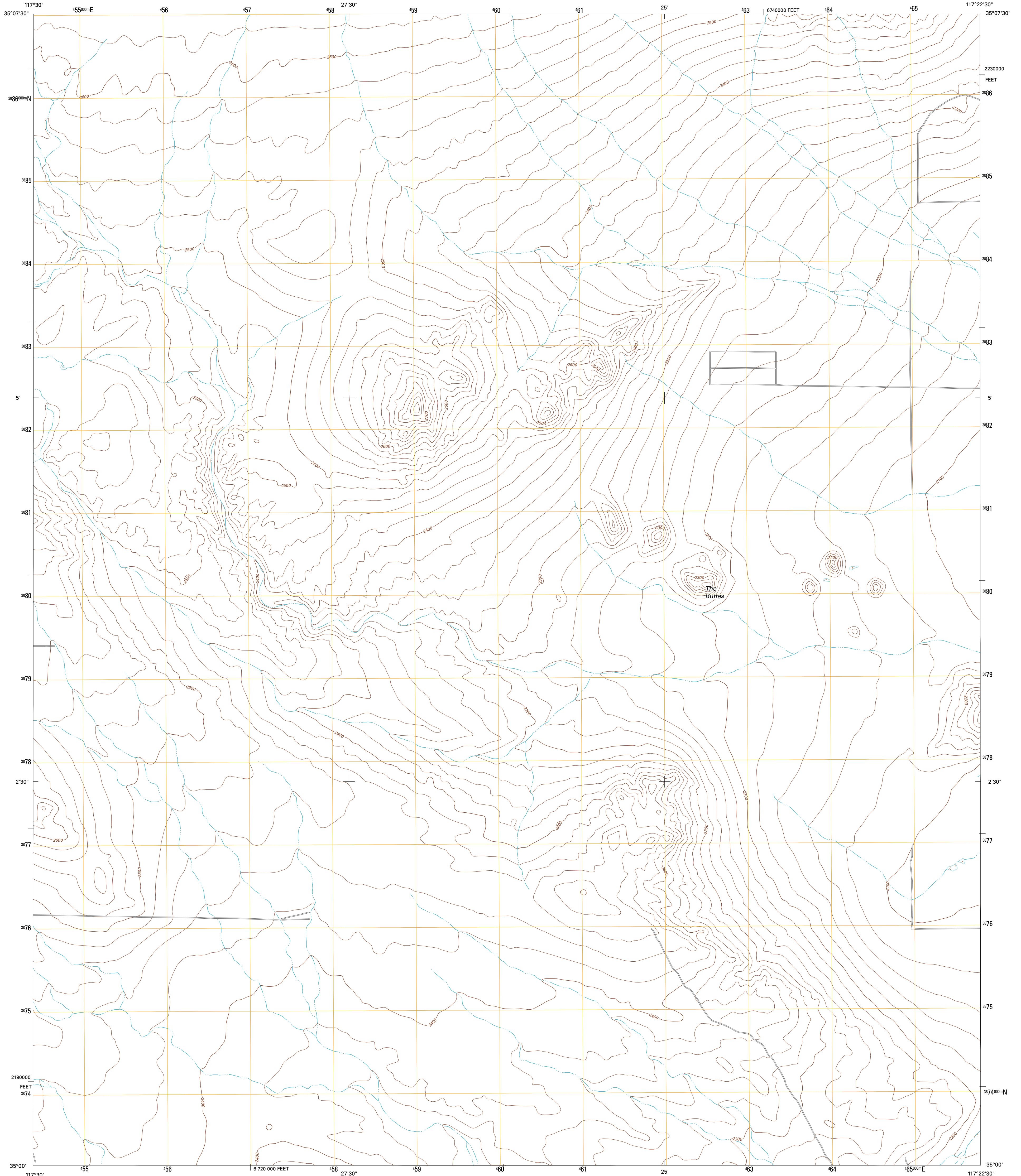




U.S. DEPARTMENT OF THE INTERIOR
U. S. GEOLOGICAL SURVEY

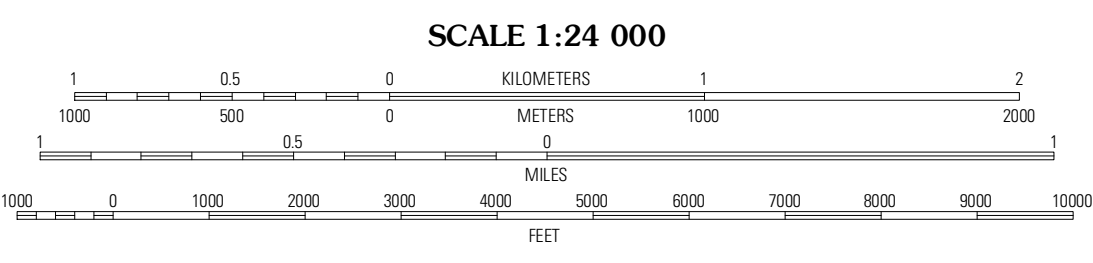
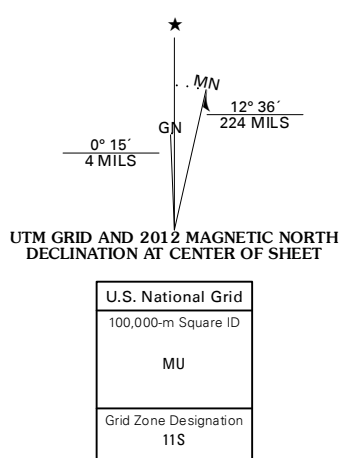


THE BUTTES QUADRANGLE
CALIFORNIA-SAN BERNARDINO CO.
7.5-MINUTE SERIES



Produced by the United States Geological Survey
North American Datum of 1983 (NAD83)
World Geodetic System of 1984 (WGS84). Projection and
1 000-meter grid: Universal Transverse Mercator, Zone 11S
10 000-foot ticks: California Coordinate System of 1983
(zone 5)

Imagery: N.A.P., April 2010
Roads: ©2006-2011 TomTom
Names: G.N.S., 2011
Hydrography: National Hydrography Dataset, 2010
Contours: National Elevation Dataset, 2006
Boundaries: Census, IBWC, IBC, USGS, 1972 - 2010



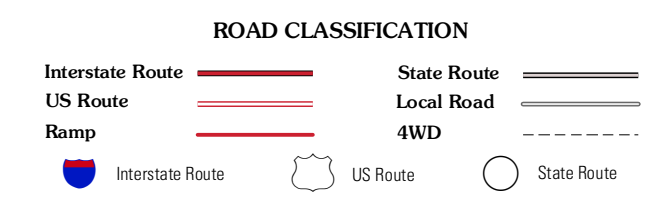
CONTOUR INTERVAL 20 FEET
NORTH AMERICAN VERTICAL DATUM OF 1988
This map was produced to conform with the
National Geospatial Program US Topo Product Standard, 2011.
A metadata file associated with this product is draft version 0.6.1



QUADRANGLE LOCATION

Boron NE	Fremont Peak	Bird Spring
Saddleback Mountain	The Buttes	Lockhart
Kramer Junction	Kramer Hills	Twelve Gauge Lake

ADJOINING 7.5 QUADRANGLES



THE BUTTES, CA
2012