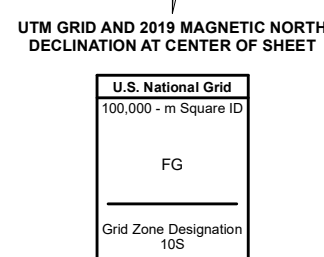
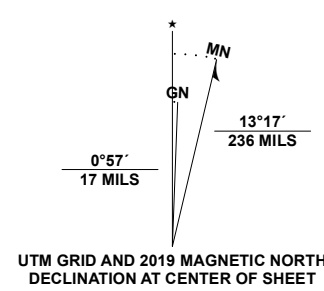


Produced by the United States Geological Survey

North American Datum of 1983 (NAD83) World Geodetic System of 1984 (WGS84) Projection and 1 000-meter grid/Universal Transverse Mercator, Zone 10S This map is not a legal document. Boundaries may be generalized for this map scale. Private lands within government reservations may not be shown. Obtain permission before entering private lands.

Table listing data sources: Imagery (NAIP, May 2020 - June 2020), Roads (U.S. Census Bureau, 2016-2021), Names (GNIS, 1981-2021), Hydrography (National Hydrography Dataset, 2006-2021), Contours (National Elevation Dataset, 2019), Boundaries (Multiple sources; see metadata file, 2019-2021), Public Land Survey System (BLM, 2020), Wetlands (FWS National Wetlands Inventory, 1985).



CONTOUR INTERVAL 10 FEET NORTH AMERICAN VERTICAL DATUM OF 1988 This map was produced to conform with the National Geospatial Program US Topo Product Standard.



Table of adjoining quadrangles: 1 Woodward Island, 2 Holt, 3 Stockton West, 4 Clifton Court Forebay, 5 Lathrop, 6 Midway, 7 Tracy, 8 Vernalis.

ROAD CLASSIFICATION legend: Expressway (thick red line), Secondary Hwy (red line), Ramp (red line with arrow), Local Connector (thin red line), Local Road (black line), 4WD (dashed line), US Route (black line with shield), State Route (black line with circle).

