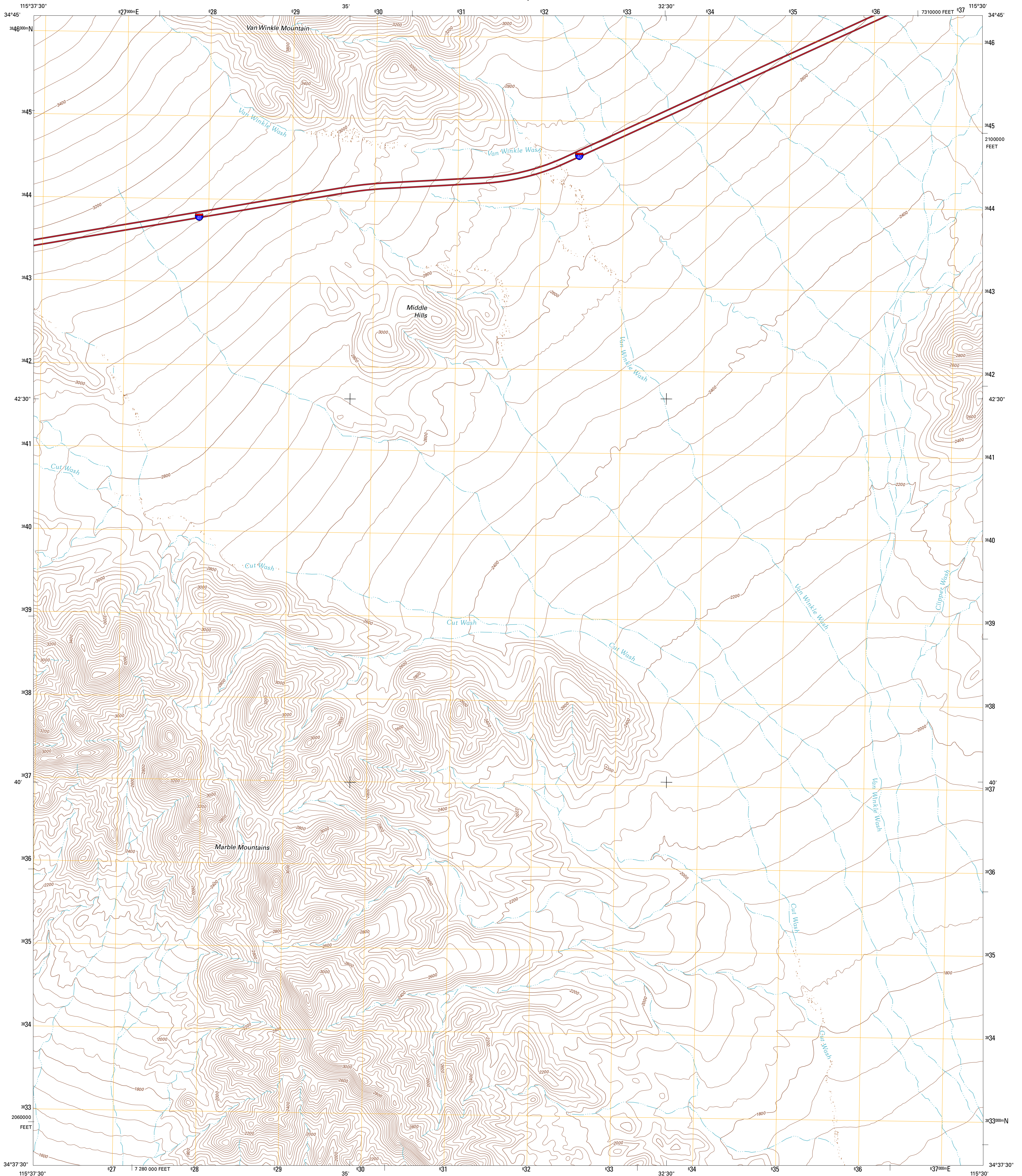




U.S. DEPARTMENT OF THE INTERIOR
U. S. GEOLOGICAL SURVEY

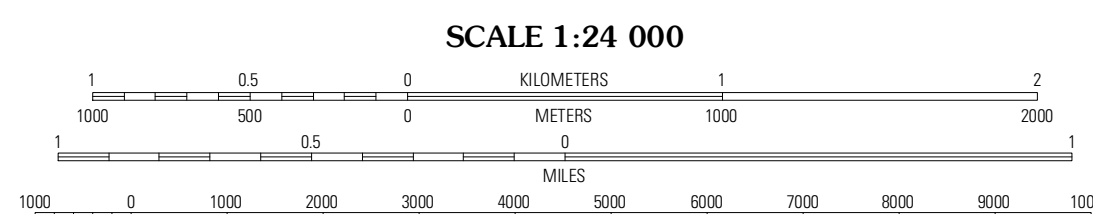
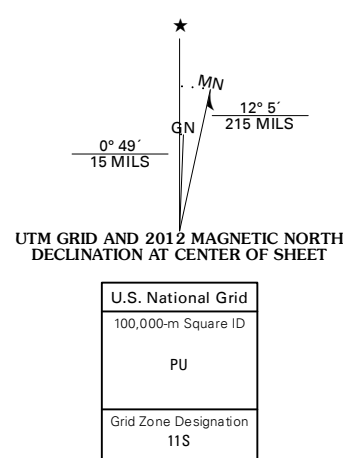


VAN WINKLE WASH QUADRANGLE
CALIFORNIA-SAN BERNARDINO CO.
7.5-MINUTE SERIES



Produced by the United States Geological Survey
North American Datum of 1983 (NAD83)
World Geodetic System of 1984 (WGS84). Projection and
10 000-foot ticks: Universal Transverse Mercator, Zone 11S
(zone 5)

Imagery.....NAIP, April 2010 - June 2010
Roads.....©2006-2011 TomTom
Names.....GNS, 2011
Hydrography.....National Hydrography Dataset, 2010
Contours.....National Elevation Dataset, 2006
Boundaries.....Census, BWC, BGC, USGS, 1972 - 2010



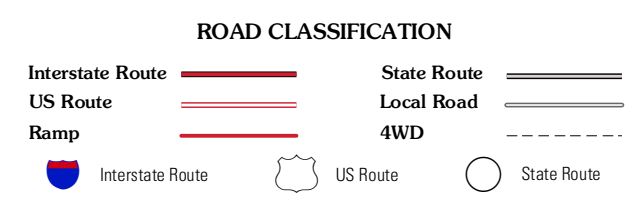
CONTOUR INTERVAL 40 FEET
NORTH AMERICAN VERTICAL DATUM OF 1988
This map was produced to conform with the
National Geospatial Program US Topo Product Standard, 2011.
A metadata file associated with this product is draft version 0.6.1



QUADRANGLE LOCATION

| | | |
|---------------|-------------------|---------------------|
| Bighorn Basin | Van Winkle Spring | West of Blind Hills |
| Brown Buttes | Van Winkle Wash | Castle Dome |
| Amboy | Cadiz | Cadiz Summit |

ADJOINING 7.5' QUADRANGLES



VAN WINKLE WASH, CA
2012