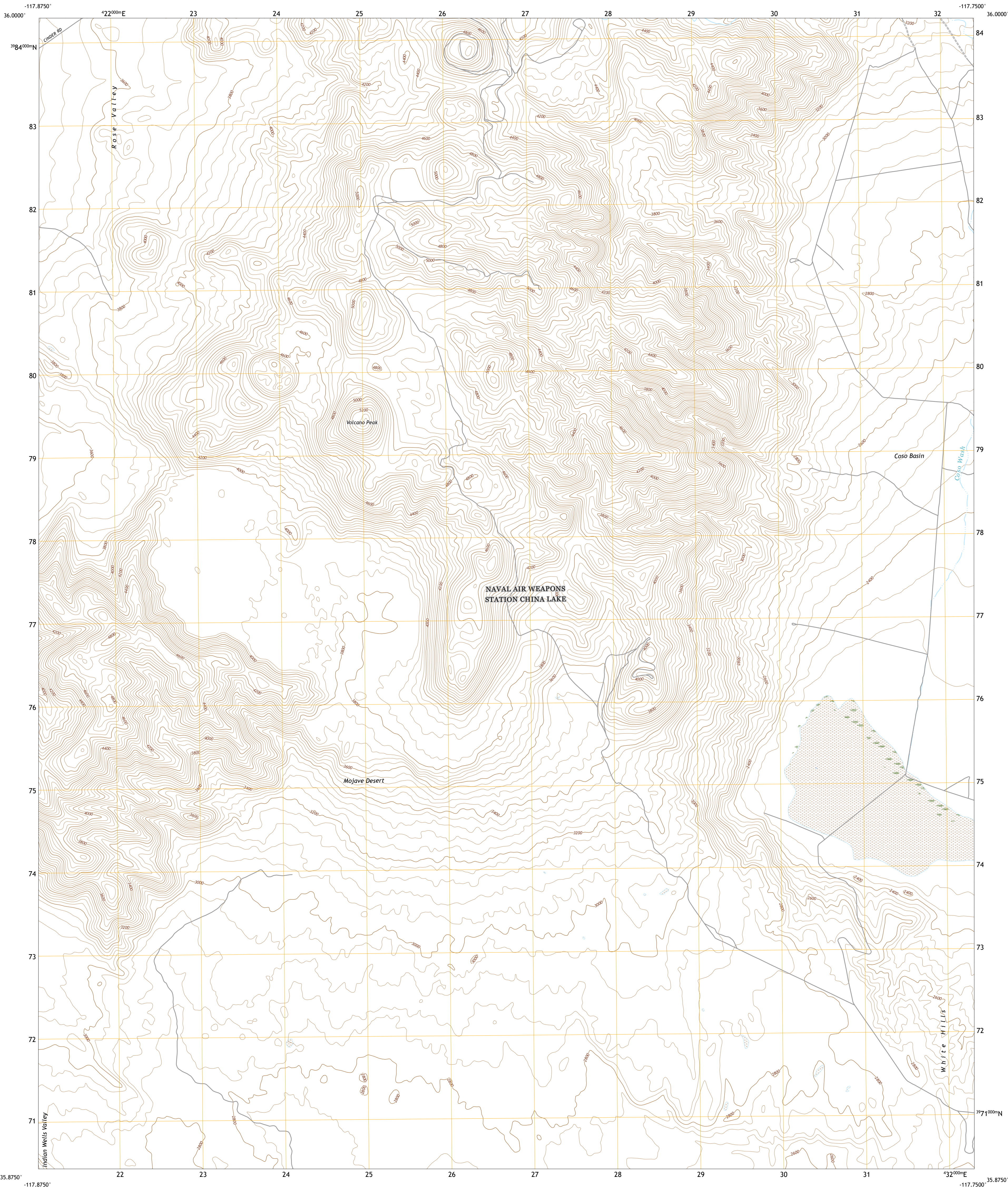




U.S. DEPARTMENT OF THE INTERIOR
U.S. GEOLOGICAL SURVEY

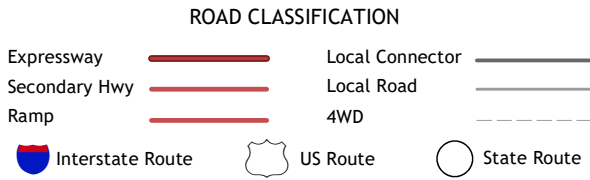
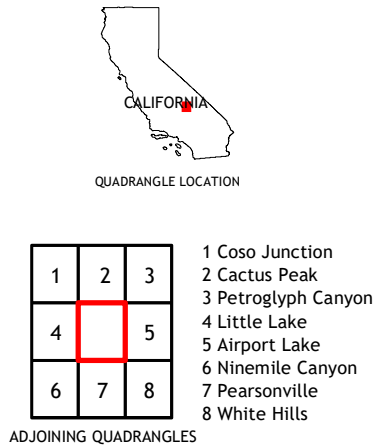
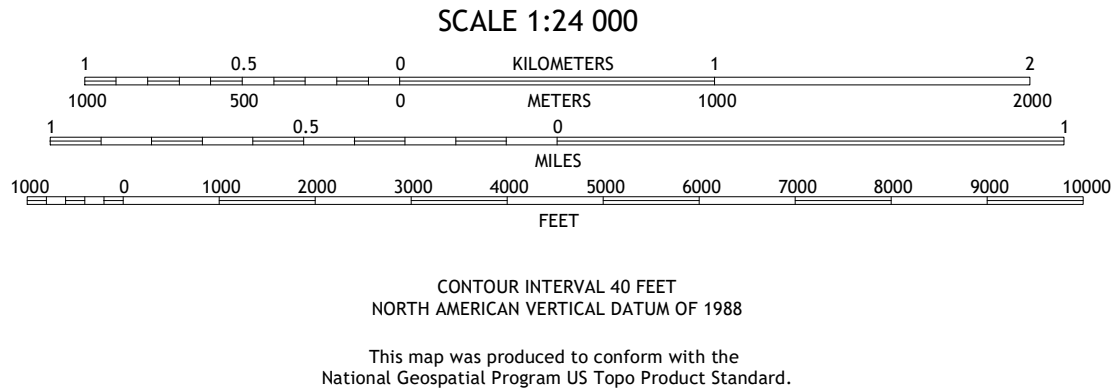
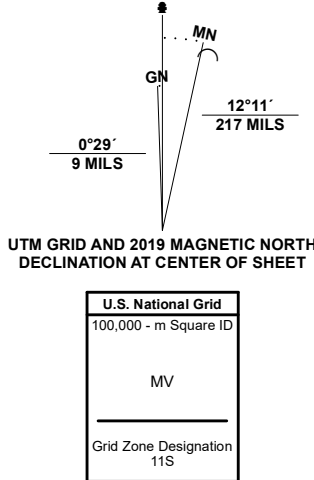


VOLCANO PEAK QUADRANGLE
CALIFORNIA - INYO COUNTY
7.5-MINUTE SERIES



Produced by the United States Geological Survey
North American Datum of 1983 (NAD83)
World Geodetic System of 1984 (WGS84). Projection and
1 000-meter grid/Universal Transverse Mercator, Zone 11S
This map is not a legal document. Boundaries may be
generalized for this map scale. Private lands within government
reservations may not be shown. Obtain permission before
entering private lands.

Imagery.....N.A.I.P., June 2020 - June 2020
Roads.....U.S. Census Bureau, 2016
Names.....GNIS, 1981 - 2021
Hydrography.....National Hydrography Dataset, 2001 - 2020
Contours.....National Elevation Dataset, 2007
Boundaries.....Multiple sources: see metadata file, 2019 - 2021
Public Land Survey System.....BLM, 2020
Wetlands.....FWS National Wetlands Inventory, 1984



VOLCANO PEAK, CA
2021

