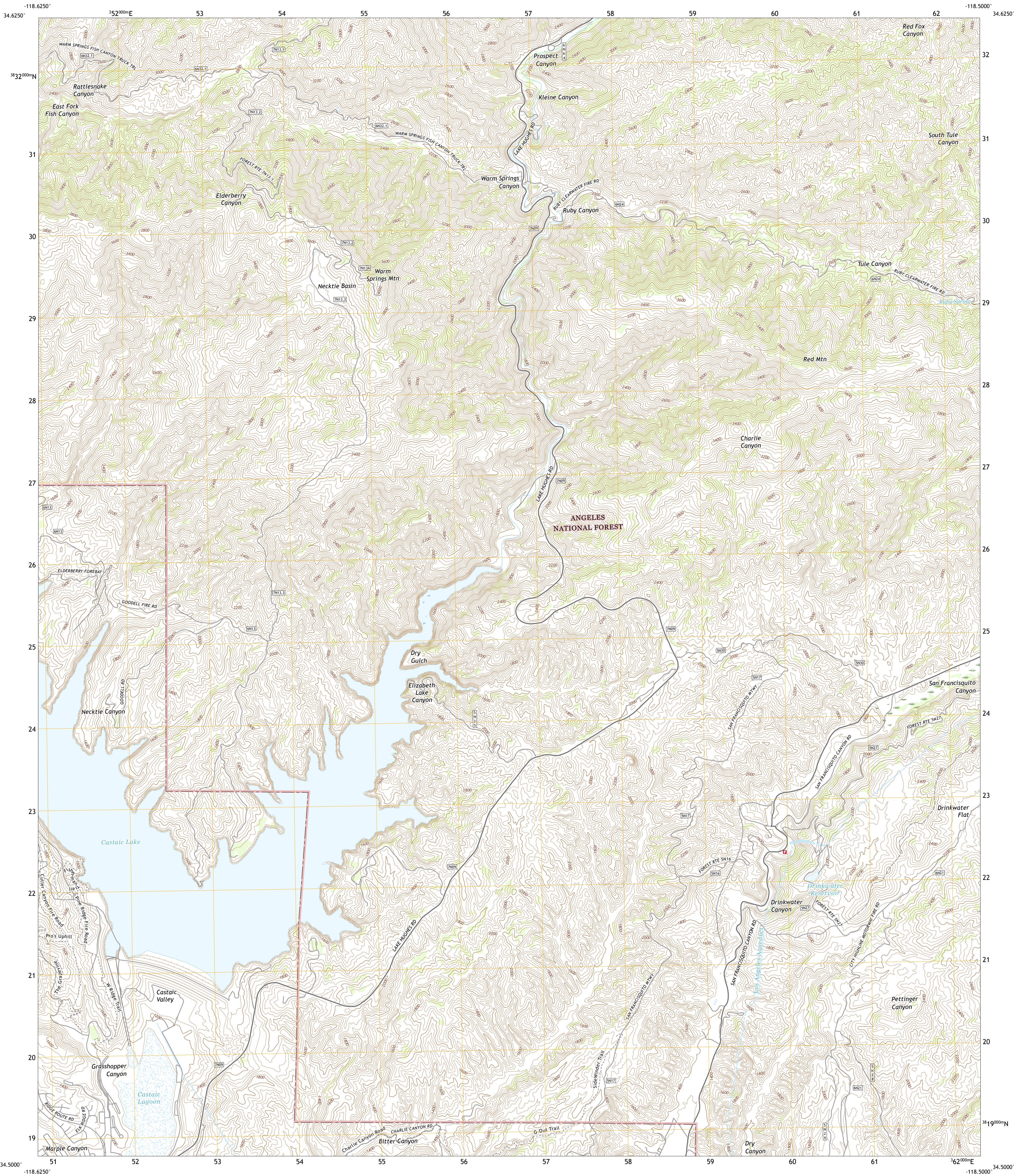




U.S. DEPARTMENT OF THE INTERIOR  
U.S. GEOLOGICAL SURVEY

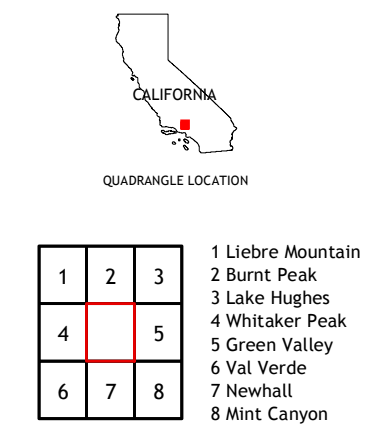
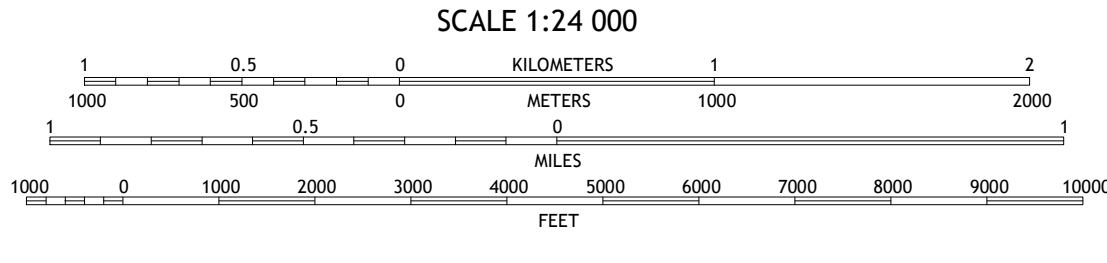
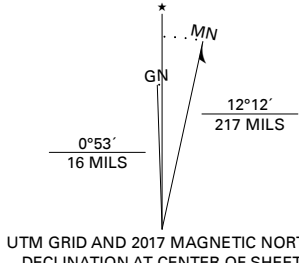


WARM SPRINGS MOUNTAIN QUADRANGLE  
CALIFORNIA - LOS ANGELES COUNTY  
7.5-MINUTE SERIES



Produced by the United States Geological Survey  
North American Datum of 1983 (NAD83)  
World Geodetic System of 1984 (WGS84). Projection and  
1 000-meter grid: Universal Transverse Mercator, Zone 11S  
This map is not a legal document. Boundaries may be  
generalized for this map scale. Private lands within government  
reservations may not be shown. Obtain permission before  
entering private lands.

Imagery.....NAIP, May 2016 - October 2016  
Roads.....U.S. Census Bureau, 2016  
Roads within US Forest Service Lands.....FS Topo  
Data with limited Forest Service updates, 2018  
Names.....GNIS, 1981  
Hydrography.....National Hydrography Dataset, 2001 - 2018  
Contours.....National Elevation Dataset, 2018  
Boundaries.....Multiple sources: see metadata file 2016  
Public Land Survey System.....BLM, 2018  
Wetlands.....FWS National Wetlands Inventory 1976 - 1986



ROAD CLASSIFICATION	
Expressway	Local Connector
Secondary Hwy	Local Road
Ramp	4WD
Interstate Route	US Route
FS Primary Route	State Route
FS Passenger Route	FS High Clearance Route

Check with local Forest Service unit  
for current travel conditions and restrictions.

**WARM SPRINGS MOUNTAIN, CA**  
**2018**

