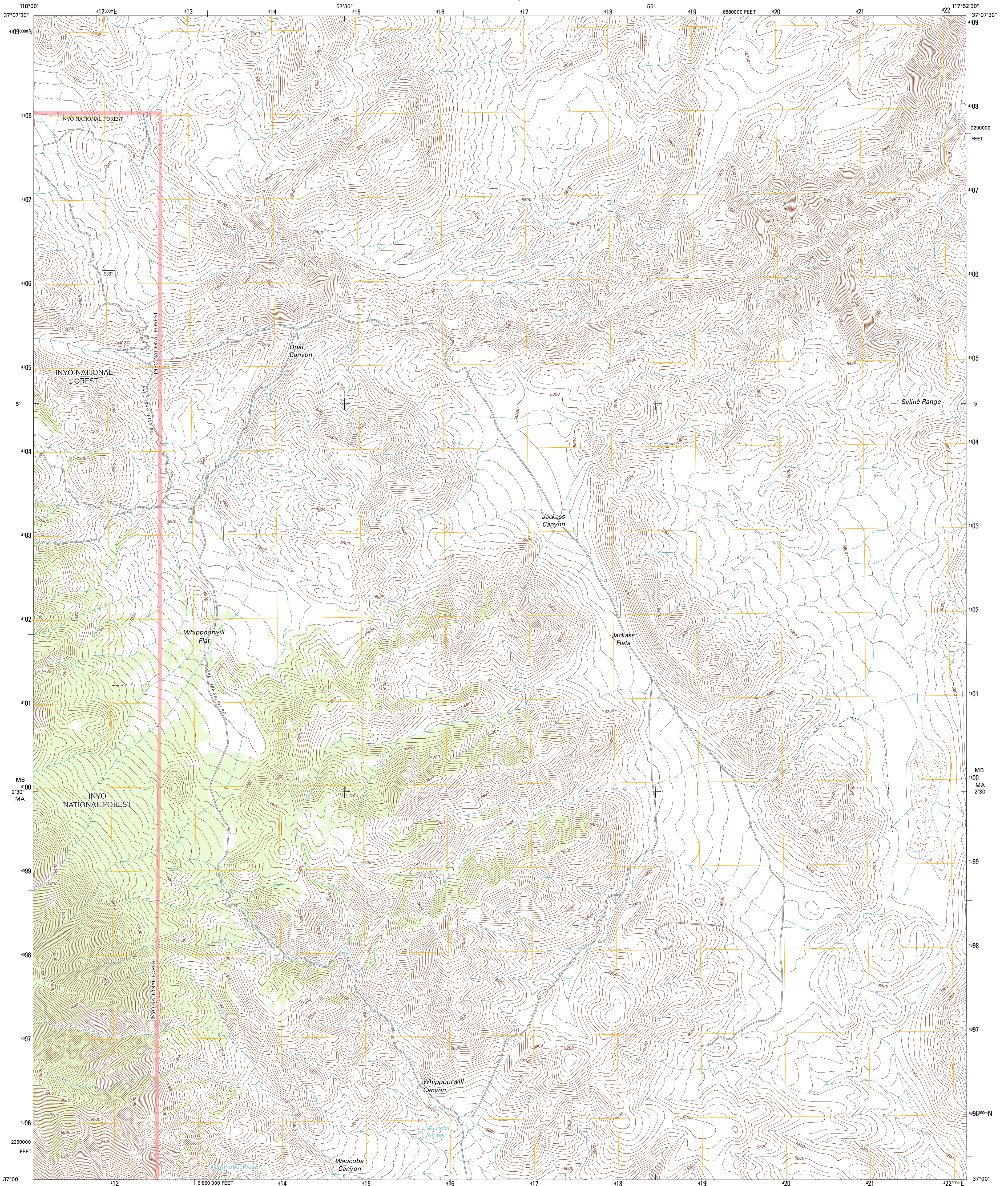




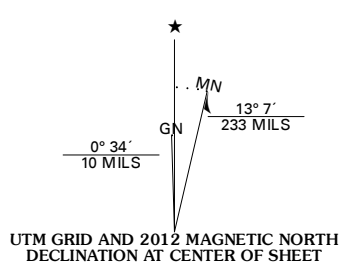
U.S. DEPARTMENT OF THE INTERIOR
U. S. GEOLOGICAL SURVEY



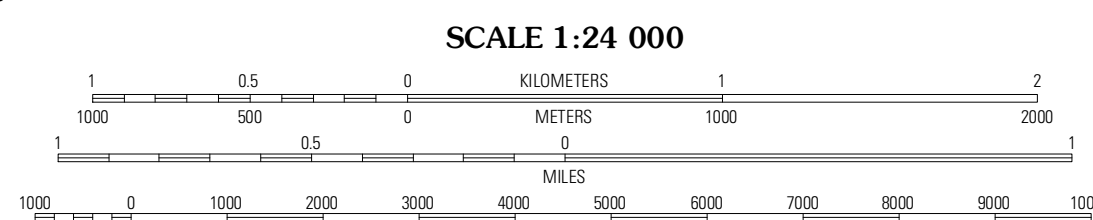
WAUCOBA SPRING QUADRANGLE
CALIFORNIA-INYO CO.
7.5-MINUTE SERIES



Produced by the United States Geological Survey
North American Datum of 1983 (NAD83)
World Geodetic System of 1984 (WGS84). Projection and
1 000-meter grid: Universal Transverse Mercator, Zone 11S
10 000-foot ticks: California Coordinate System of 1983
(zone 4)



U.S. National Grid
100,000m Square ID
MB
MA
Grid Zone Designation
11S



CONTOUR INTERVAL 40 FEET
NORTH AMERICAN VERTICAL DATUM OF 1988
This map was produced to conform with the
National Geospatial Program US Topo Product Standard, 2011.
A metadata file associated with this product is draft version 0.6.1



QUADRANGLE LOCATION

Cosburn Valley	Joshua Flats	East of Joshua Flats
Waucoba Mountain	Waucoba Spring	East of Waucoba Spring
Mazourka Peak	Waucoba Canyon	East of Waucoba Canyon

ROAD CLASSIFICATION

	Interstate Route		State Route
	US Route		Local Road
	Ramp		4WD
	FS Primary Route		FS Passenger Route
	FS High Clearance Route		

Check with local Forest Service unit for current travel conditions and restrictions.

WAUCOBA SPRING, CA
2012

ADJOINING 7.5 QUADRANGLES

Imagery: NAIP, July 2010
Roads: ©2006-2011 TomTom
Roads within US Forest Service Lands: FSTopo Data with limited Forest Service updates, 2009
Names: GNIS, 2011
Hydrography: National Hydrography Dataset, 2010
Contours: National Elevation Dataset, 2001
Boundaries: Census, IBWC, IBC, USGS, 1972 - 2010