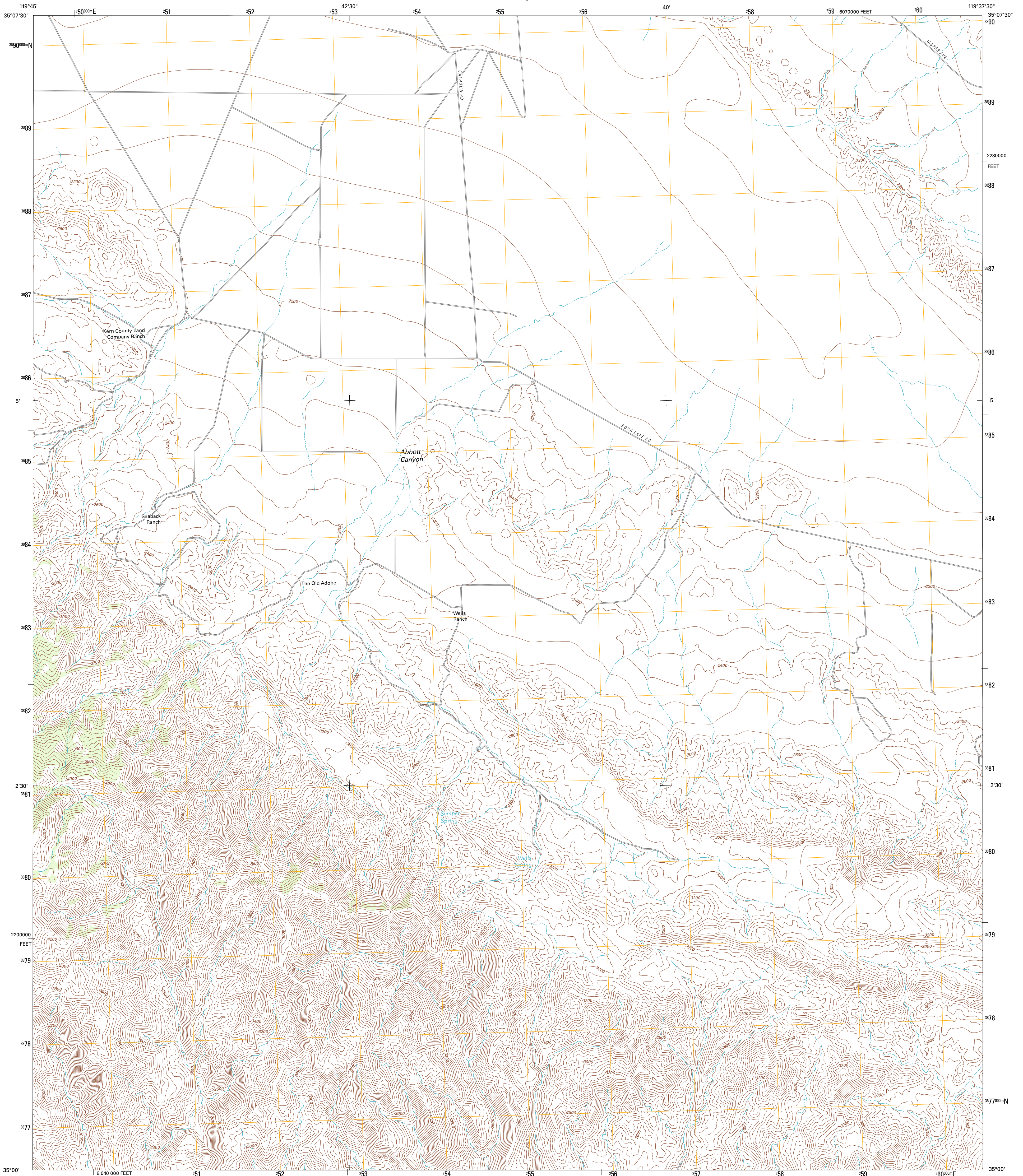




U.S. DEPARTMENT OF THE INTERIOR  
U. S. GEOLOGICAL SURVEY

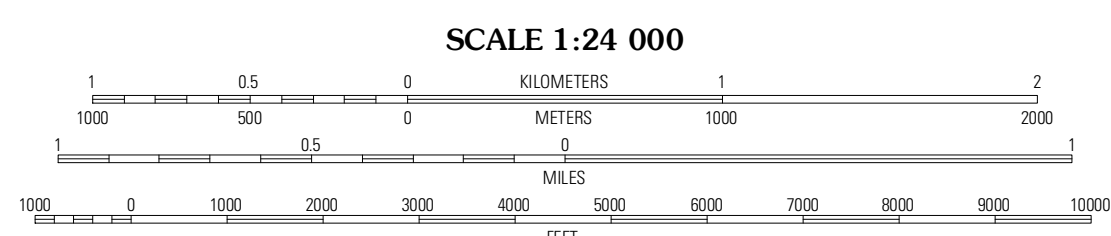
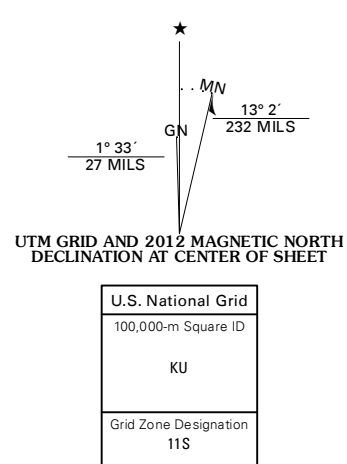


WELLS RANCH QUADRANGLE  
CALIFORNIA-SAN LUIS OBISPO CO.  
7.5-MINUTE SERIES



Produced by the United States Geological Survey  
North American Datum of 1983 (NAD83)  
World Geodetic System of 1984 (WGS84). Projection and  
1 000-meter grid: Universal Transverse Mercator, Zone 11S  
10 000-foot ticks: California Coordinate System of 1983  
(zone 5)

Imagery:.....N.A.P., June 2010  
Roads:.....©2006-2011 TomTom  
Names:.....©2006-2011 TomTom  
Hydrography:.....National Hydrography Dataset, 2010  
Contours:.....National Elevation Dataset, 2009  
Boundaries:.....Census, IBWC, IBC, USGS, 1972 - 2010



CONTOUR INTERVAL 40 FEET  
NORTH AMERICAN VERTICAL DATUM OF 1988

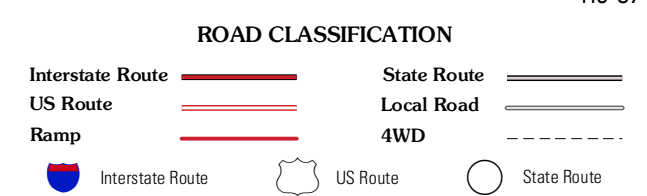
This map was produced to conform with the  
National Geospatial Program US Topo Product Standard, 2011.  
A metadata file associated with this product is draft version 0.6.1



QUADRANGLE LOCATION

Painted Rock	Panorama Hills	Fellows
Caliente Mountain	Wells Ranch	Elkhorn Hills
Peak Mountain	New Cuyama	Cuyama

ADJOINING 7.5' QUADRANGLES



WELLS RANCH, CA  
2012