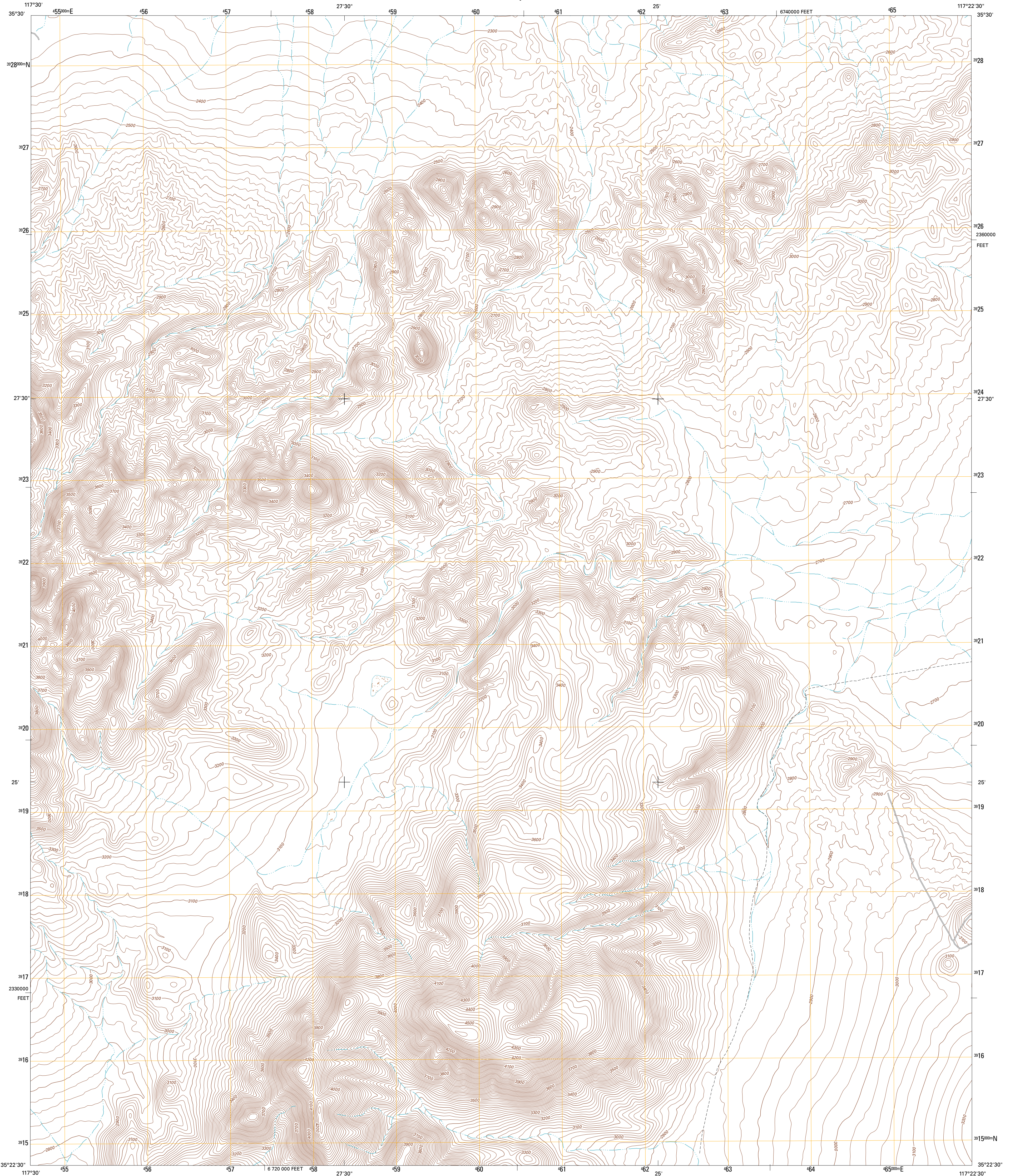




U.S. DEPARTMENT OF THE INTERIOR  
U. S. GEOLOGICAL SURVEY

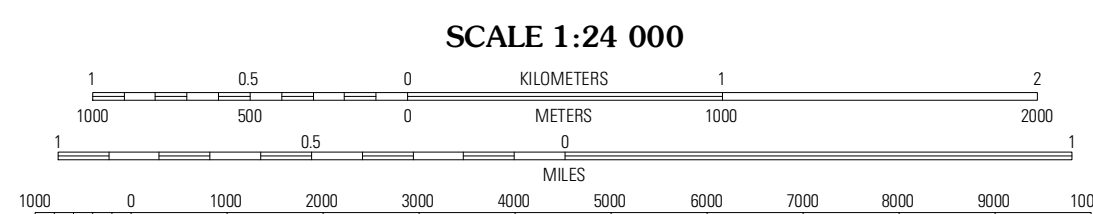
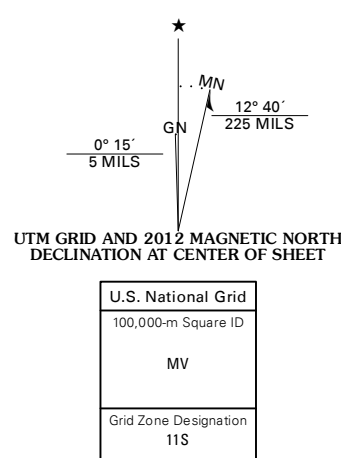


WEST OF BLACK HILLS QUADRANGLE  
CALIFORNIA-SAN BERNARDINO CO.  
7.5-MINUTE SERIES



Produced by the United States Geological Survey  
North American Datum of 1983 (NAD83)  
World Geodetic System of 1984 (WGS84). Projection and  
1 000-meter grid: Universal Transverse Mercator, Zone 11S  
10 000-foot ticks: California Coordinate System of 1983  
(zone 5)

Imagery.....NAIP, April 2010 - May 2010  
Roads.....©2006-2011 TomTom  
Names.....GNIS, 2011  
Hydrography.....National Hydrography Dataset, 2010  
Contours.....National Elevation Dataset, 2006  
Boundaries.....Census, BWC, B.C., USGS, 1972 - 2010



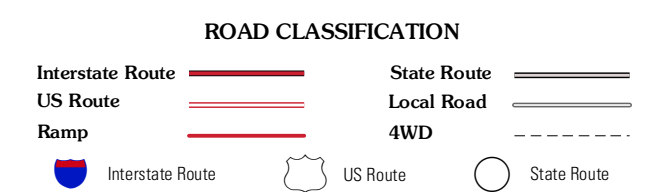
CONTOUR INTERVAL 20 FEET  
NORTH AMERICAN VERTICAL DATUM OF 1988  
This map was produced to conform with the  
National Geospatial Program US Topo Product Standard, 2011.  
A metadata file associated with this product is draft version 0.6.1



QUADRANGLE LOCATION

Spangler Hills West	Spangler Hills East	Christmas Canyon
Rinker Mountain	West of Black Hills	Black Hills
Red Mountain	Cuddeback Lake	Blackwater Well

ADJOINING 7.5' QUADRANGLES



WEST OF BLACK HILLS, CA  
2012