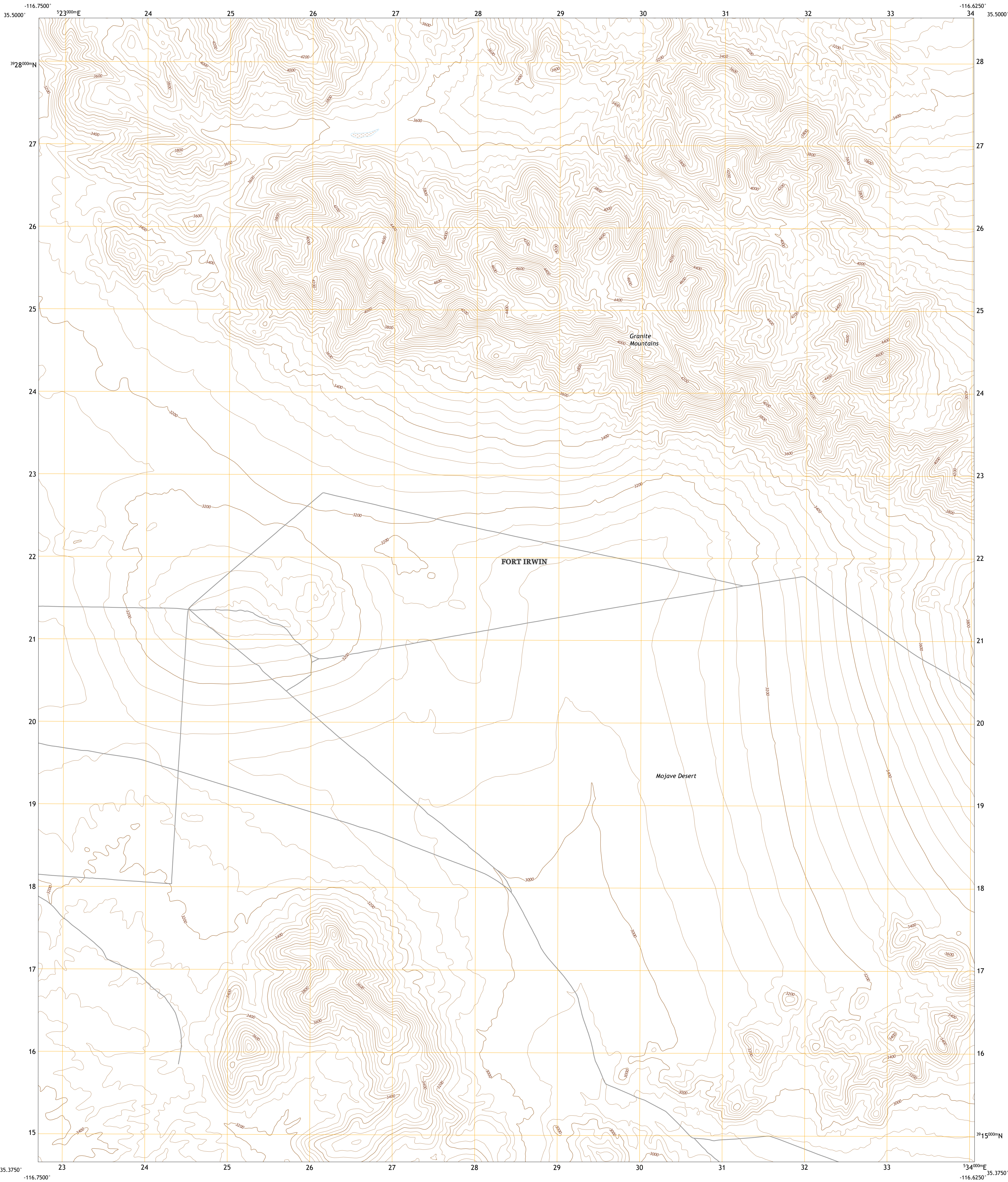




U.S. DEPARTMENT OF THE INTERIOR
U.S. GEOLOGICAL SURVEY

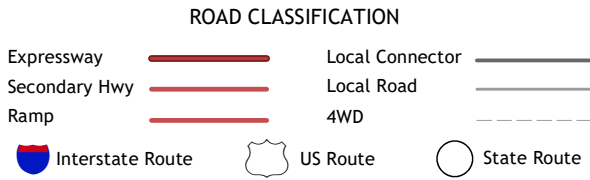
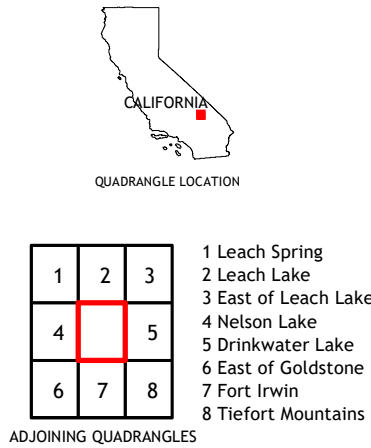
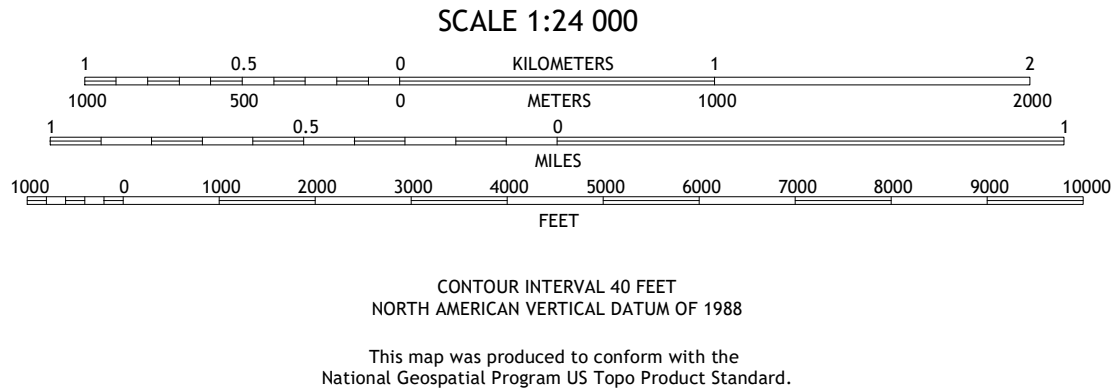
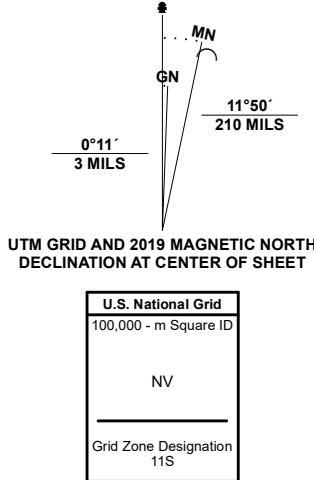


WEST OF DRINKWATER LAKE QUADRANGLE
CALIFORNIA - SAN BERNARDINO COUNTY
7.5-MINUTE SERIES



Produced by the United States Geological Survey
North American Datum of 1983 (NAD83)
World Geodetic System of 1984 (WGS84). Projection and
1 000-meter grid/Universal Transverse Mercator, Zone 11S
This map is not a legal document. Boundaries may be
generalized for this map scale. Private lands within government
reservations may not be shown. Obtain permission before
entering private lands.

Imagery.....	NAIP, May 2020	May 2020
Roads.....	U.S. Census Bureau, 2016	2016
Names.....	GNIS, 1981	2021
Hydrography.....	National Hydrography Dataset, 2019	2019
Contours.....	National Elevation Dataset, 2005	2005
Boundaries.....	Multiple sources: see metadata file, 2019	2021
Public Land Survey System.....	BLM, 2020	2020
Wetlands.....	FWS National Wetlands Inventory, 1983	1983



WEST OF DRINKWATER LAKE, CA
2021

