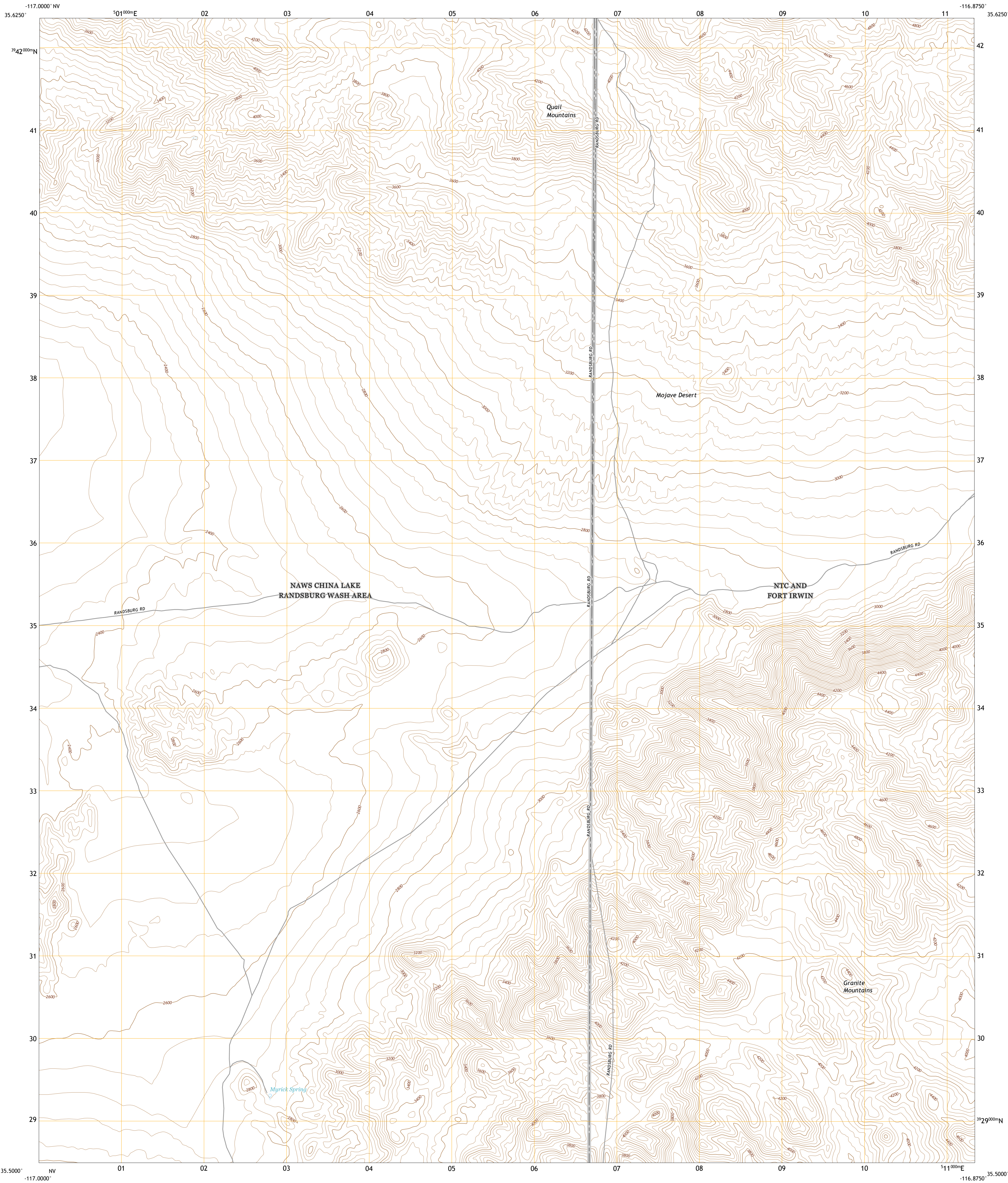




U.S. DEPARTMENT OF THE INTERIOR
U.S. GEOLOGICAL SURVEY

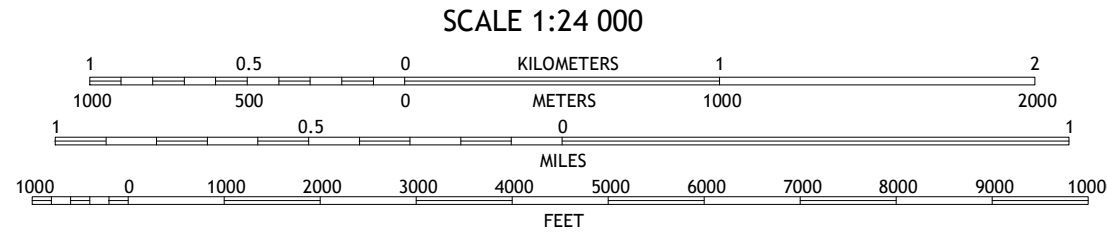
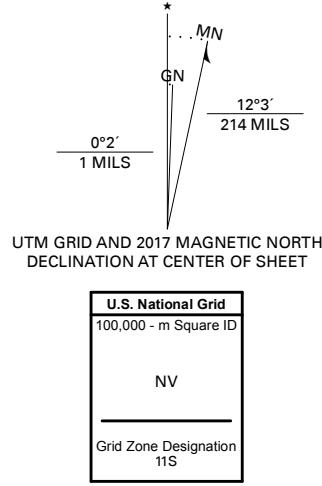


WEST OF LEACH SPRING QUADRANGLE
CALIFORNIA - SAN BERNARDINO COUNTY
7.5-MINUTE SERIES



Produced by the United States Geological Survey

North American Datum of 1983 (NAD83)
World Geodetic System of 1984 (WGS84), Projection and
1 000-meter grid/Universal Transverse Mercator, Zone 11S
This map is not a legal document. Boundaries may be
generalized for this map scale. Private lands within government
reservations may not be shown. Obtain permission before
entering private lands.
Imagery.....NAIP, May 2016 - October 2016
Roads.....U.S. Census Bureau, 2016
Names.....GNIS, 1981-2017
Hydrography.....National Hydrography Dataset, Not Available
Contours.....National Elevation Dataset, 2005-2006
Boundaries.....Multiple sources; see metadata file 2016-2017
Public Land Survey System.....BLM, 2018
Wetlands.....FWS National Wetlands Inventory 1983



1	2	3
4	5	6
7	8	9

1 Wingate Pass
2 Hidden Spring
3 Quail Spring
4 Pilot Knob Valley East
5 Leach Spring
6 Eagle Crags
7 West of Nelson Lake
8 Nelson Lake

ROAD CLASSIFICATION	
Expressway	Local Connector
Secondary Hwy	Local Road
Ramp	4WD
Interstate Route	US Route
	State Route

WEST OF LEACH SPRING, CA
2018

